



CH2M  
4121 Carmichael Rd  
Suite 400  
Montgomery, AL 36106  
O +1 334 271 1444  
F +1 334-277-5763  
www.ch2m.com

Ms. Julie Ange  
Senior Environmental Engineering Specialist  
Alabama Department of Environmental Management (ADEM)  
1400 Coliseum Boulevard  
Montgomery, AL 36110-2400

September 6, 2016

Subject: Request for Modifications to Montgomery Downtown Environmental Assessment Project  
Technical Work Plan

Dear Ms. Ange:

Thank you for meeting with the Downtown Environmental Alliance (DEA) Technical Committee on August 22, 2016, to review the field activities completed to date and to discuss the proposed Phase II field activities for the Montgomery Downtown Environmental Project (DEAP). We appreciate your review and approval during the meeting of our proposed locations and approach for conducting the Phase II activities. In addition, we discussed a few minor modifications to the Technical Work Plan (TWP), which was approved on May 20, 2016. Those requested changes to the TWP are as follows:

- In lieu of re-installing the Cypress Creek gauge, the DEA proposes to use the U.S. Geological Survey (USGS) Alabama River gauge located less than 1 mile (0.7 mile) from the outlet of Cypress Creek to the Alabama River. The data collected during the first hydraulic study (July/August 2016) demonstrate that the Alabama River and Cypress Creek are in direct communication and elevations in Cypress Creek reflect those of the Alabama River. In addition, because of the steep bank in the study area of Cypress Creek, installation of the gauge is difficult and hazardous, and expected to be more so in the winter (wetter) months when the next study is proposed and water levels are anticipated to be higher.
- In lieu of using Vapor Pins to collect soil vapor around the north wing of the Alabama Attorney General's (AG's) and County Annex III buildings, the DEA proposes to install temporary soil vapor sampling probes to depths of the basement floor elevation using the AMS Retract-A-Tip probing system or direct-push technology where Vapor Pins are not appropriate. The use of a Vapor Pin requires a minimum 10 × 10 feet square area of intact concrete without cracks, seams, or joints. Most areas identified adjacent to the AG's north wing and County Annex III are not of sufficient size to meet this criterion. Alternatively, temporary soil vapor probes can be installed within grassy or other uncovered areas with minimal disruption to landscaping.

Proposed locations of the soil vapor samples are shown on Figure 1. The depths and locations of soil vapor samples around the County Annex III and AG Building will be based on site topographic maps and avoidance of utility conflicts.

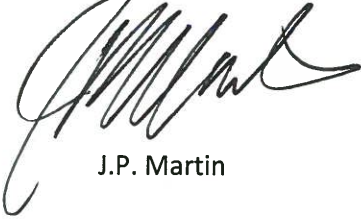
The remainder of the Phase II field activities will be conducted as presented at the meeting in accordance with the Final TWP. The DEA requests that ADEM provide written approval to these modifications as soon as possible, as field activities are planned to begin September 19, 2016. Should

Ms. Julie Ange  
Page 2  
September 6, 2016

you have any questions regarding this document, please contact me at 334.215.9036 or [j.p.martin@ch2m.com](mailto:j.p.martin@ch2m.com), or Glen Davis at 224.215.9016 or [gdavis3@ch2m.com](mailto:gdavis3@ch2m.com).

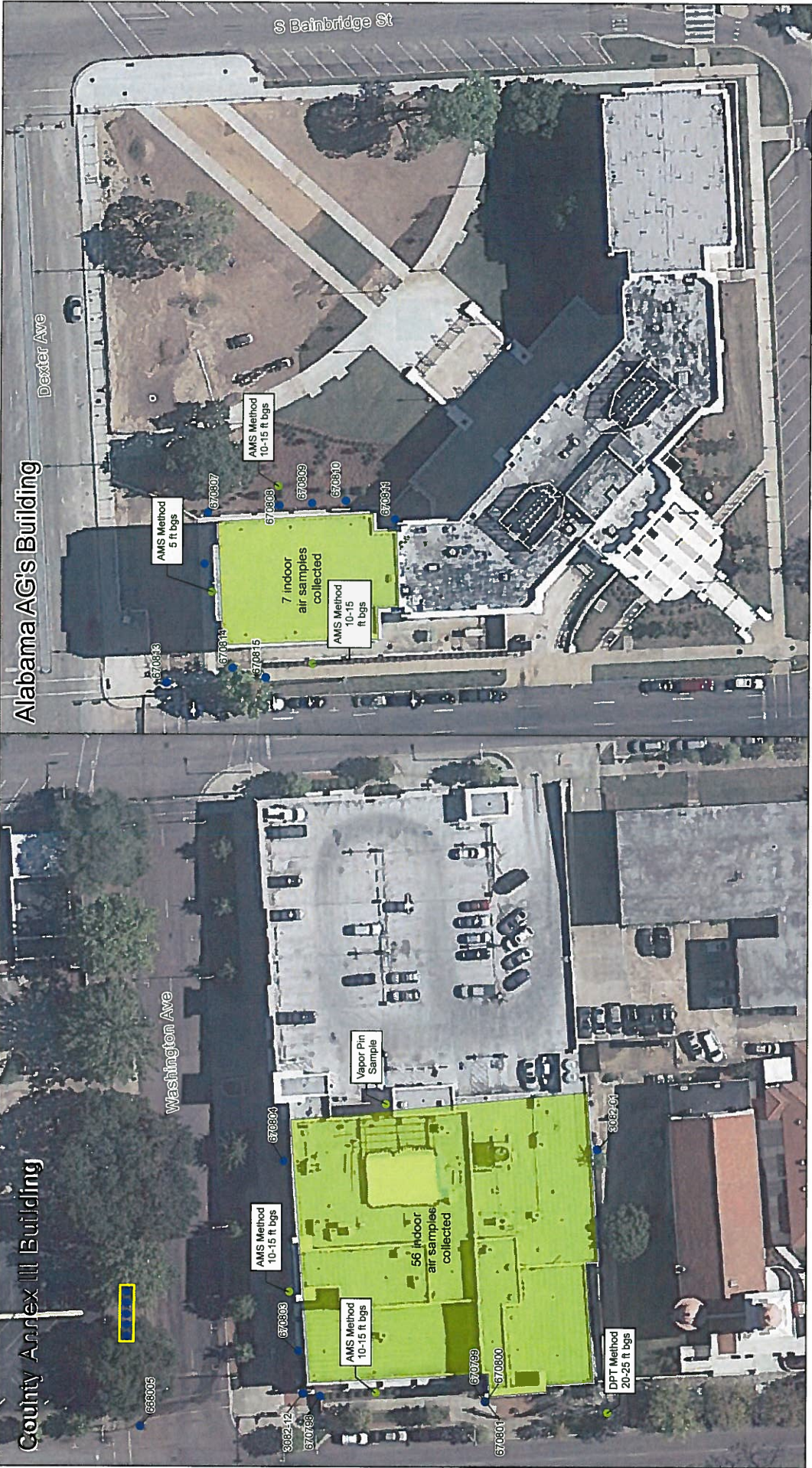
Sincerely,

CH2M

A handwritten signature in black ink, appearing to read "J.P. Martin", written in a cursive style.

J.P. Martin

c: Downtown Alliance Members w/enclosure



**LEGEND**

- Proposed Soil Vapor Sample Location
- Historical Soil Vapor Sample Location
- Vapor Intrusion Monitoring System

**Notes:**

1. AG - Attorney General
2. Soil vapor locations are approximate where text description were provided in lieu of coordinates.
3. All indoor air samples were collected within the building under the areas shaded in green.
4. ft bgs - feet below ground surface

**FIGURE 1**  
 County Annex III and Alabama AG's Buildings  
 Proposed Soil Vapor Sampling Locations  
 Downtown Environmental Assessment Project  
 Montgomery, AL

