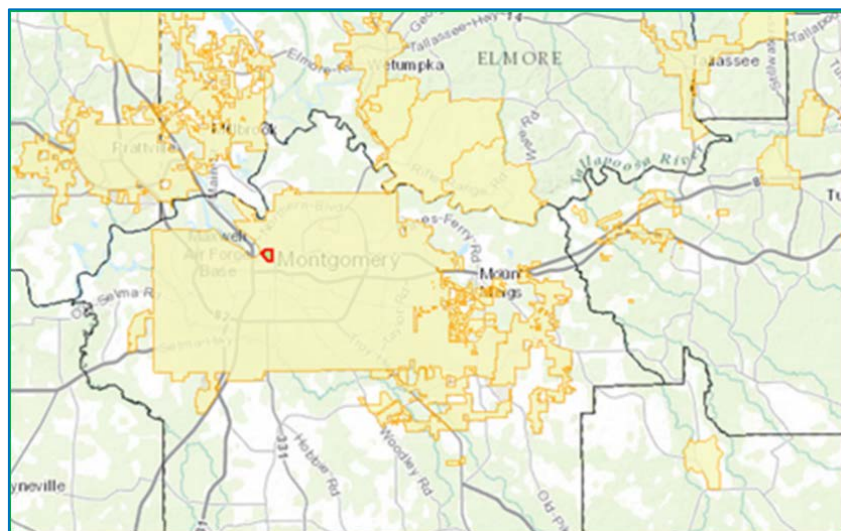


*Draft*

# Capital City Plume Community Involvement and Outreach Plan

*Prepared for*

Downtown Environmental Alliance



November 2015

Ashley Cousins Environmental Strategies & Solutions LLC

ACCESS

ch2m<sup>SM</sup>

# Contents

Section	Page
<b>Terms and Definitions .....</b>	<b>4</b>
<b>Acronyms and Abbreviations.....</b>	<b>5</b>
<b>1 Introduction.....</b>	<b>6</b>
1.1 Community Involvement Plan Purpose .....	6
<b>2 Capital City Plume Overview.....</b>	<b>7</b>
2.1 Site Description and Location .....	7
2.2 Regulatory History and Activities.....	9
<b>3 Community Profile .....</b>	<b>10</b>
3.1 Identification of Potentially Affected Community Members .....	10
3.2 Community Interviews.....	11
3.2.1 Reported Levels of Interest/Concern.....	11
3.2.2 Preferred Methods of Communication and Other Recommendations.....	12
3.3 Other Community Input.....	12
3.4 Potentially Affected Populations .....	12
3.4.1 Residents.....	12
3.4.2 Employment.....	13
3.4.3 Tourism .....	14
3.5 Local Government.....	14
3.6 Other Community Characteristics .....	14
<b>4 Community Involvement Action Plan.....</b>	<b>15</b>
4.1 Roles and Responsibilities.....	15
4.2 Recommended Outreach Methods .....	15
4.2.1 Key Project Contact.....	15
4.2.2 Project Website.....	16
4.2.3 Community Outreach Group .....	17
4.2.4 Interested Party and Stakeholder Database.....	18
4.2.5 Public Document Repository .....	18
4.2.5 Bill Inserts.....	19
4.2.6 Newsletters, Fact Sheets, and Other Printed Materials.....	19
4.2.7 Social Media Monitoring and Posts .....	19
4.2.8 Project Documentation.....	20
4.2.9 Public Notices.....	20
4.2.10 Public Meetings.....	20
4.2.11 Announcements in Printed and Broadcast Media and YouTube Uploads .....	20
<b>5 Community Involvement Schedule .....</b>	<b>21</b>

**Tables**

3-1 Potential Stakeholder Groups and Key Issues ..... 10  
 5-1 CIOP Activities by Project Phase ..... 21

**Figures**

2-1 Capital City Plume Site Location Map ..... 7  
 2-2 Capital City Plume Project Site Boundary and Census Block Groups ..... 8  
 3-1 Mile Radius of Capital City Plume Project Boundary ..... 13  
 4-1 Screenshot of Capital City Plume Project Website Advertising COG Nomination Process .... 17  
 4-2 Flyer Advertising COG Nomination Process..... 18  
 4-3 Example Newsletter Article, *Chamber of Commerce Newsletter*..... 19  
 4-4 Example Newsletter Article, *ADEM Insider*.....19  
 4-5 Example Social Media Post ..... 20  
 4-6 Screenshot of Project-Related Announcement for Public Access Television and YouTube... 20

# Terms and Definitions

**Aquifer** - underground, water-bearing layer of earth, porous rock, sand or gravel, through which water can seep or be held in natural storage (also referred to as groundwater)

**Benzene, toluene, ethyl benzene, and xylenes (BTEX)** - Petroleum hydrocarbons often detected in groundwater near fuel releases.

**Community Outreach Group (COG)** - A group of citizens who live, work or own property in downtown Montgomery in the area near the Capital City Plume.

**Groundwater** - water present below ground surface (see also aquifer).

**Groundwater monitoring wells**-devices installed into the ground to allow access and collection of groundwater. Groundwater monitoring wells are used to assess concentrations of contaminants in groundwater.

**Plume** - A body of impacted groundwater originating from a specific source and influenced by such factors as the local groundwater flow pattern, density of the contaminant, and character of the aquifer.

**Potable water** - Water of suitable quality for drinking.

**Remediation** - The process of reducing the concentration of a contaminant(s) in air, water, or soil media to a specific level.

**Tetrachloroethylene (or Perchloroethylene or PCE)** - chlorinated cleaning solvent typically used in drycleaning of clothes

# Acronyms and Abbreviations

ACS	American Community Survey
ADEM	Alabama Department of Environmental Management
ADPH	Alabama Department of Public Health
AHWMMA	Alabama Hazardous Wastes Management and Minimization Act
Alliance	Downtown Environmental Alliance
bls	below land surface
BTEX	benzene, toluene, ethyl benzene, and xylenes
CIOP	Community Involvement and Outreach Plan
COC	constituent of concern
COG	Community Outreach Group
EPA	U.S. Environmental Protection Agency
FAQ	frequently asked question
GIS	geographical information system
MWWSSB	Montgomery Water Works and Sanitary Sewer Board
PCE	tetrachloroethylene or perchloroethylene
POC	point-of-contact
TCE	trichloroethylene

# Section 1 Introduction

In accordance with the Alabama Environmental Management Act, Alabama Water Pollution Control Act, Hazardous Wastes Management and Minimization Act (AHWMMA), and Alabama Hazardous Substance Cleanup Fund (AHSCF). The Alabama Department of Environmental Management (ADEM) is administering a settlement agreement in partnership with the Downtown Environmental Alliance (Alliance) for the site response for the proposed Superfund listing of the Capital City Plume (U.S. Environmental Protection Agency (EPA) ID Number 0001058056) located in the City of Montgomery, Montgomery County, Alabama. Members of the Alliance include: City of Montgomery, Montgomery County, Montgomery Water Works and Sanitary Sewer Board (MWWSSB), State of Alabama, and The Advertiser Company. The terms of the settlement agreement require the development of this Community Involvement and Outreach Plan, which is to be implemented, upon approval by ADEM.

## 1.1 Community Involvement and Outreach Plan Purpose

Community involvement and outreach is an integral element of all investigation and remedial processes. The purpose of this Community Involvement and Outreach Plan (CIOP) is to serve as a guide for providing meaningful community involvement for efforts related to the Capital City Plume project. The activities outlined are designed to engage potentially affected stakeholders in addressing identified and anticipated community concerns, expectations, and needs related to the project. Community concerns, expectations, and needs to be addressed by the activities defined in this CIOP were identified during interviews with stakeholders representing broad interests who live, work, or own property at or near the project site in the downtown area of Montgomery, Alabama. A list of interests represented during community interviews, concerns identified, and an assessment on levels of concern are provided in *Section 3.2 Community Interviews*.

This CIOP provides information about the affected area, which is known as the Capital City Plume, and specifies recommended community relations activities to be undertaken by both the Alliance and ADEM throughout the course of the project. Various diverse activities are recommended to ensure an inclusive interactive process, which allows opportunities for participation by all interested stakeholders, for the Alliance and ADEM to seek consultation from the potentially affected community, and for building and maintaining cooperative relationships among representatives of the Alliance, ADEM, and community members.

## Section 2 Capital City Plume Overview

### 2.1 Site Description and Location

The boundary of the Capital City Plume project is within 47 U.S. Census block areas of downtown Montgomery, Alabama, and covers approximately 0.27 square miles. The Alabama River is northwest of the site. The plumes are areas of groundwater impacts. Depths to groundwater within the area generally range from 25 to 55 feet below land surface (bls). The general project location is shown on Figure 2-1 and the project boundaries with Census Blocks are shown on Figure 2-2. The primary constituents detected in the downtown area are tetrachloroethylene (PCE) and its breakdown products, trichloroethylene (TCE), and BTEX (benzene, toluene, ethyl benzene, and total xylenes). These types of contaminants are common in urban environments and can originate from various sources, such as drycleaners, automobile fueling and service operations, and other commercial and industrial operations. Typically, BTEX is associated with leaking underground storage tanks and should be regulated under the ADEM Underground Storage Program.

Figure 2-1: Capital City Plume Site Location Map



Sources: US Census ACS 2008-2012, EPA Environmental Justice Screening and Mapping Tool

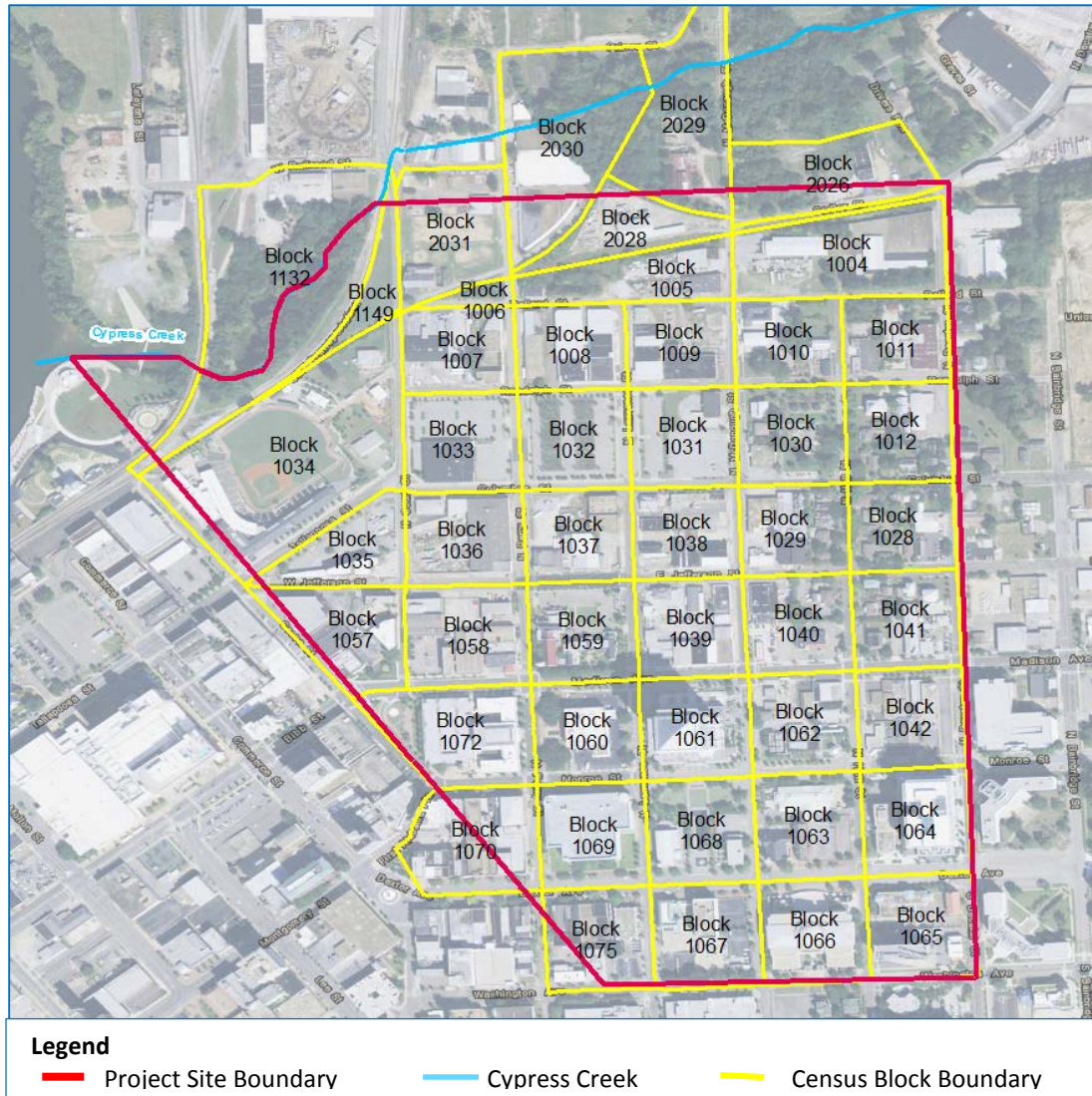
Land use within the project boundary is urban mixed with a small area being forested wetland. Cypress Creek defines a portion of the northern site boundary.

Primary land uses are commercial services, institutional, industrial, transportation and utilities, and limited high and medium density residential. Buildings primarily are governmental and private



office buildings, service buildings (hotels, restaurants, auto repair, printing, dry-cleaning, and churches), warehouses, and light industrial with some loft apartments located above commercial and retail space. Information provided by the Montgomery Downtown Business Association indicates currently, there are approximately 283 loft apartments in the downtown area with approximately 218 additional units planned.

Figure 2-2: Capital City Plume Project Site Boundary and Census Blocks





number of hotels, restaurants, and attractions associated with the history of the Civil Rights movement are increasing, with efforts underway to establish more retail outlets.

## 2.2 Regulatory History and Activities

Indications of environmental impact in the downtown area were discovered in the early 1990s. In 1991, the MWWSSB detected trace amounts of PCE in a well while performing voluntary source water testing at each well in the area. Although PCE was not detected in the water blended from multiple wells, the suspect well was removed from the public water supply system. In 1993, PCE was also discovered in soils about 25 feet bls while excavating for the energy plant for the RSA Tower. Following several years of investigation by ADEM, a definitive source was not identified, and the site



was referred to the EPA for evaluation for inclusion on the National Priorities List (Superfund list).

EPA proposed the site for the Superfund list in 2000, but the City of Montgomery and State of Alabama requested the area not be listed. The City of Montgomery signed a consent agreement and completed investigation and remedial actions, including enacting an ordinance that prohibits drilling of wells in the downtown area and included planting poplar trees in the central area of the project site to assist in groundwater uptake and cleanup. Additionally, the MWWSSB abandoned the public water supply well field north of downtown.

EPA conducted additional investigation between 2008 and 2011 in the downtown area. Following those investigations, the City of Montgomery, Montgomery County, the MWWSSB, The Advertiser Company, and the State of Alabama formed the Alliance to complete the remaining investigation and any required remediation under the oversight of the ADEM. The proposal from the Alliance and ADEM to utilize this approach was favorably received by EPA. Following a public comment period with no adverse comments, on September 30, 2015, EPA signed a Memorandum of Agreement (MOA) with ADEM to defer lead agency regulatory oversight. The Alliance signed a Settlement Agreement for Site Response with ADEM to complete the remaining work, and agreed in a Past Cost Agreement with EPA to repay \$2.6 million over a 3-year period for EPA's previous work related to the Capital City Plume.

EPA has determined "site contamination does not currently threaten people living and working near the site". (Source: <http://cumulis.epa.gov/supercpad/cursites/csitinfo.cfm?id=0406330>)

## Section 3 Community Profile

### 3.1 Identification of Potentially Affected Community Members

Potential key stakeholders, including individuals, groups, and businesses with a connection to downtown, were identified for personal interviews to obtain additional background information and assess the level of community-wide knowledge and current concerns about the Capital City Plume. Interest groups identified for assessing the level of community concern and the potential topics of importance to them are identified in Table 3-1.

*Table 3-1: Potential Stakeholder Groups and Potential Topics of Interest*

Stakeholder/Interest Group	Potential Topics of Interest
Downtown business owners	<ul style="list-style-type: none"> <li>• Negative image associated with the Capital City Plume</li> <li>• Impacts on business operations</li> <li>• Property values</li> <li>• Ability of customers to access/use services, deterrent for ongoing redevelopment efforts</li> </ul>
Managers of government-owned buildings (city, county, state, and federal)	<ul style="list-style-type: none"> <li>• Health and safety for building occupants</li> <li>• Ability to access/use buildings</li> <li>• Negative image associated with the Capital City Plume as a deterrent for tenants</li> </ul>
Apartment owners/developers	<ul style="list-style-type: none"> <li>• Health and safety for building occupants</li> <li>• Property values</li> <li>• Deterrent for ongoing redevelopment efforts</li> </ul>
Downtown residents (homeowners and tenants)	<ul style="list-style-type: none"> <li>• Personal health and safety</li> <li>• Property values</li> </ul>
Downtown Business Association members	<ul style="list-style-type: none"> <li>• Negative image associated with the Capital City Plume impacts on business operations</li> <li>• Ability of customers to access/use services</li> <li>• Deterrent for ongoing redevelopment efforts</li> </ul>
Historical Society representatives	<ul style="list-style-type: none"> <li>• Impact on tourism</li> <li>• Ability to access/use historical sites</li> <li>• Potential impacts on historical structures</li> </ul>
Restaurant owners	<ul style="list-style-type: none"> <li>• Ability of customers to access/use services</li> <li>• Deterrent for ongoing redevelopment efforts which bring more customers to the area</li> </ul>
Hotel owners	<ul style="list-style-type: none"> <li>• Negative image associated with the Capital City Plume impacts on business operations</li> <li>• Ability of customers to access/use services,</li> <li>• Deterrent for ongoing redevelopment efforts</li> </ul>
Churches	<ul style="list-style-type: none"> <li>• Health and safety,</li> <li>• Property values</li> <li>• Ability to access/use buildings</li> </ul>

Table 3-1: Potential Stakeholder Groups and Potential Topics of Interest

Stakeholder/Interest Group	Potential Topics of Interest
Recreational facilities	<ul style="list-style-type: none"> <li>• Health and safety</li> <li>• Property values</li> <li>• Ability to access/use buildings</li> </ul>
Real estate representatives (agents, brokers, attorneys)	<ul style="list-style-type: none"> <li>• Property values, negative image associated with the Capital City Plume as a deterrent to developers and potential building tenants</li> <li>• Deterrent for ongoing redevelopment efforts</li> </ul>
Bankers	<ul style="list-style-type: none"> <li>• Property values</li> <li>• Concern about liability associated with downtown development projects until potential Superfund listing resolved</li> <li>• Deterrent for ongoing redevelopment efforts</li> </ul>

## 3.2 Community Interviews

For the purposes of preparing this CIOP, interviews were conducted with individuals who are potentially affected by the Capital City Plume because of their involvement in the downtown area at or near the project site through their residence, job, property ownership, or affiliation with a group with a specific interest in downtown Montgomery. Approximately 50 people, including at least one representative from the interest groups identified in Section 3.1 Identification of Potentially Affected Community Members, were interviewed during August and September 2015.

A questionnaire was designed to use as a guide to obtain background information on the level of knowledge and understanding of the Capital City Plume and assess current levels of interest in the project. A copy of the questionnaire is provided in Appendix A.

Interviewees were asked if they had specific concerns or ideas about how to address the Capital City Plume. They were also asked about preferred methods for communication and for recommendations on ways to engage themselves and others with an interest in project-related community involvement efforts. Additionally, those interviewed were asked to identify other individuals or interest groups who may be interested in community relations efforts or have information pertinent to the project.

### 3.2.1 Reported Levels of Interest/Concern

Most of those interviewed reported some knowledge of the Capital City Plume, with the majority of information obtained from reports in local media outlets. However, a number of those interviewed had no knowledge about the site and ongoing efforts. Those individuals reported they are relatively new to the Montgomery area and did not see the news coverage in June 2015. Those who have invested in property downtown or who work in the real estate market demonstrated an increased level of awareness related to their due diligence efforts.

The main concerns identified are the potential for the Capital City Plume to adversely affect property values and negatively impact downtown redevelopment. No one interviewed was aware of any instance when the Capital City Plume was responsible for preventing a real estate transaction, but several interviewees indicated they will not invest in property in downtown

Montgomery until the potential Superfund listing is no longer an issue. Some expressed concern that banks may not consider extending financing for projects in the downtown area. Bankers indicated that each bank has a due diligence requirement before a loan is made and that potential environmental liabilities are considered as part of due diligence.

### 3.2.2 Preferred Methods of Communication and Other Recommendations

Most of those interviewed indicated that they would use a website to obtain information about the Capital City Plume and prefer receiving email updates instead of attending meetings. Local media outlets (print and broadcast) were cited as the source for most known information and as appropriate outlets for disseminating future project-related information. Young professionals identified the Downtown Business Association's network and social media as the best methods for communicating with their peers.

Respondents were asked for specific ideas on how to address the Capital City Plume, and most indicated they did not have enough knowledge or background to respond. Several interviewees commented that cleanup is not needed if the plume is not negatively affecting anyone and stated that funds dedicated to the project could be better spent on other issues. Others noted that they would like to be assured that the plume is contained and will not affect other areas.

## 3.3 Other Community Input

Alliance representatives attended meetings, including those for the Montgomery Downtown Business Association, to provide project-related information and obtain feedback from association members. Feedback was supportive of doing whatever is identified as being necessary to close out the project. Concerns were expressed related to making sure site-related efforts do not hinder ongoing redevelopment efforts or discourage future investment in the downtown area.

## 3.4 Potentially Affected Populations

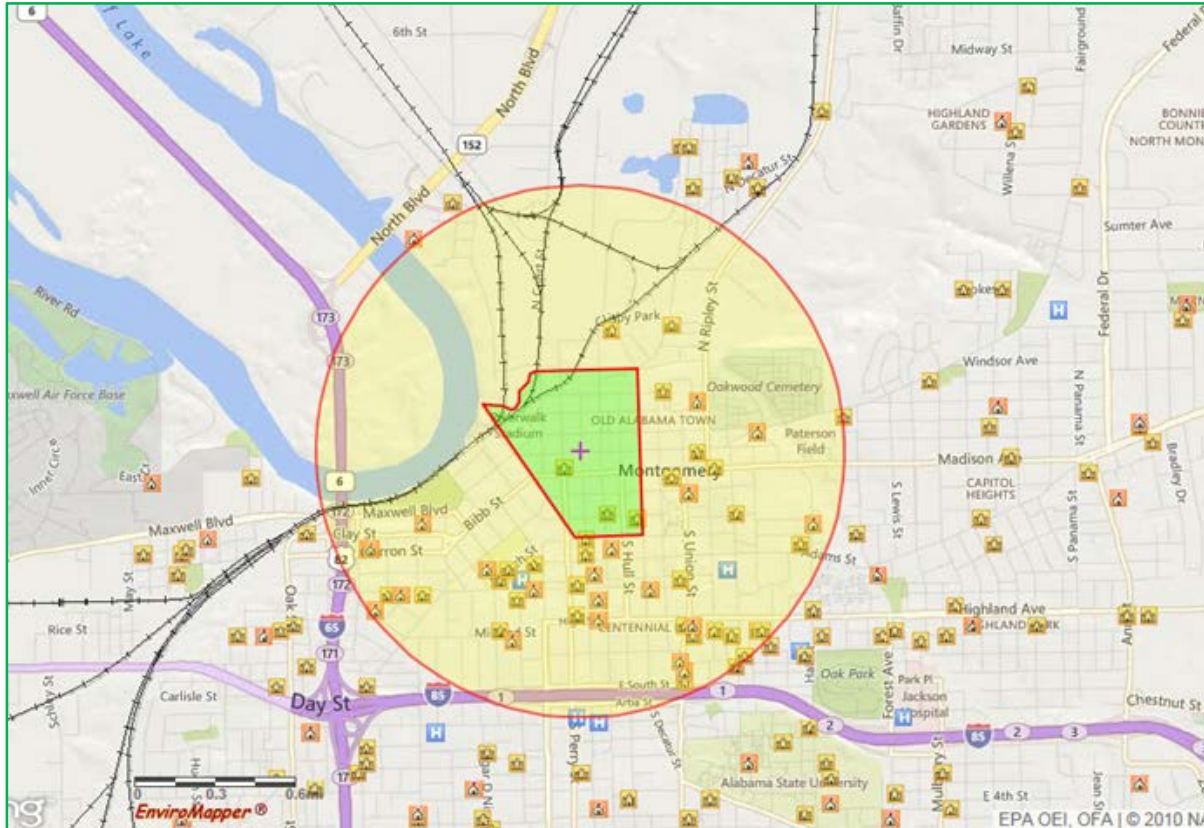
### 3.4.1 Residents

As shown on Figure 2-2, the Capital City Plume project boundary lies within portions of 47 Census block. The EPA Environmental Justice Screening and Mapping Tool was used to obtain demographic data for the project site (shown on Figure 2-1). The U.S. Census American Community Survey (ACS) 2008 – 2012 estimates 53 people live within the project boundary in 31 households. Five of these homes are owner occupied, and 26 are occupied by renters. There is an estimated total of 38 habitable housing units, including both single and multi-family housing, located within the project boundary. Recently constructed and planned loft apartments in the downtown areas are not captured in the ACS 2008-2012 data.

Within the Capital City Plume project boundary the majority of residents, 73 percent, are above the age of 18, 27 percent are minors, and 5 percent are over the age of 65. Twenty-seven percent of residents have a high school diploma or have achieved a higher level of education. All residents living within the project site boundary speak only English.



Figure 3-1: 1-Mile Radius of Capital City Plume Project Boundary



Source: EPA Environmental Justice Screening and Mapping Tool

The area within a 1-mile radius of the site, as shown in Figure 3-1, was examined to determine whether the population residing within the site boundaries is comparable to that of the surrounding community. Demographics for this area are similar to those within the project boundary. Seventy-three percent of those rent their homes. Eighty-five percent of the population is over the age of 18. Twenty-eight percent of residents have a high school diploma or have achieved a higher level of education.

It is noted that because of the recent development of loft apartments in the downtown area, the total population is likely slightly higher than reported in the 2008 – 2012 ACS for both the area within the project boundary and within a 1-mile radius of the site.

### 3.4.2 Employment

The Downtown Montgomery Business Association estimates approximately 20,000 people work in all of downtown Montgomery. However, the worksites for many of these people are located outside the project boundaries. Because Montgomery is the capital of Alabama, a number of these people are seasonal employees, who work in the downtown area during the months the Alabama Legislature is meeting. According to 2010 U.S. Census data and the Montgomery Metropolitan Planning Organization, 13,423 people work within 0.25 miles of the Alabama State Capitol Complex. This area encompasses some of the project site, including the larger government complexes that accommodate most of the employees in the area. However, this area does not include Riverwalk Stadium and other businesses, which employ an estimated 400 people, with over half of those being part-time seasonal workers. Using these data, it is estimated that less than



14,000 people work, during some part of the year, within 0.25 mile of the capital complex and the extended area to the northwest within the project boundary.

To obtain a more precise estimate of the number who work within the project boundary, a geographical information system (GIS) overlay and estimates for the number of employees for each building within the Census blocks covering the project area was used (see Figure 2-2, Capital City Plume Project Site Boundary). Based on this analysis, approximately 4,000 individuals work within the project boundary, with 300 of these being part-time seasonal employees working in the area 3 to 4 months per year.

### 3.4.3 Tourism

In addition to those who live and work in the area, as the result of redevelopment efforts, thousands of tourists visit downtown Montgomery on an annual basis. Some of the attractions that draw them to the area, such as Riverwalk Stadium, are located within the project boundary.

## 3.5 Local Government

The City of Montgomery is the county seat for Montgomery County, Alabama, with key administrative and operational buildings located in the downtown area. The City has a Mayor-Council government with nine Council members elected by districts. The County government is overseen by a five-member Commission, also elected by districts. Both the City and County are members of the Alliance and participate in community outreach efforts. Montgomery also is the State Capital with the Capitol Building and numerous other state government-related buildings located nearby. The State of Alabama is a member of the Alliance.

## 3.6 Other Community Characteristics

Facilities that hold frequent meetings or that provide services requiring individuals to come to the project area and stay for extended periods of time were researched. No public schools are located within the project boundary, but a daycare, serving pre-school age children, operates during regular business hours in a government-owned building. Additionally, in 2015, a private school serving approximately 30 sixth grade boys began holding classes at a church within the project boundary. According to the 2008 – 2012 ACS, three churches are located within the project boundary. No other facilities with frequent meetings that draw people from outside the project area have been identified.

Other environmental issues beyond the site that have the potential to affect how stakeholders respond to and participate in planned CIOP activities also were investigated. No ongoing environmental justice issues were identified in the downtown interviews through community interviews and a search of the EPA Environmental Justice Screening and Mapping Tool.

## Section 4 Community Involvement and Outreach Action Plan

Before selecting a remedial alternative, detailed technical studies will be undertaken, evaluating the degree of risk from the site and addressing remedial goals as necessary. If necessary based on this analysis, the remediation methods, design, and implementation of the appropriate remedy to meet the risk-based site goals will be evaluated. This CIOP is designed to keep members of the community informed, as needed, throughout the study process. Multiple sources of information allowing interested parties to readily obtain current project information are to be provided. Many sources are to provide essentially the same project updates and plans with the accessibility to each source varying, depending on the resources available to any given interested party. Based on the analysis of the potentially affected community, perceived issues and concerns, and the project history, specific outreach activities are recommended to meet the following goals.

- Encourage and provide opportunities for meaningful community involvement.
- Communicate factual information about the Capital City Plume to interested parties in a timely manner that is easy for all to understand.
- Provide opportunities for input and feedback related to the Capital City Plume from interested members of the community.

Based on the demographic profile of the Capital City Plume site and surrounding area, communication materials and verbal communications will be in English. However, since people of multiple ethnicities work in the downtown area, translations will be provided by request to accommodate those who do not speak or read English.

### 4.1 Roles and Responsibilities

The Alliance is working in cooperation with ADEM to carry out community involvement tasks. Specifically, the Alliance is responsible for communications and coordinating tasks. ADEM is responsible for some mandated tasks, such as the placement of public notices and maintaining a publically accessible repository of project-related documents.

### 4.2 Recommended Outreach Methods

The components described in this section make up the primary elements of the CIOP. The CIOP is intended to be a roadmap for use by all those with outreach and communications responsibilities related to the Capital City Plume project. If site conditions change, additional community concerns arise, or concerns about project-related issues intensify, outreach activities need to be adjusted to accommodate those changes.

#### 4.2.1 Key Project Contact

The Alliance will identify an individual to serve as the key point-of-contact (POC) for community outreach efforts. All questions are forwarded to and reviewed by the POC, and assigned to appropriate project personnel to be responded to in a timely manner. The POC's contact information is provided on printed outreach materials and the project website (see Section 4.2.2

Project Web Site.) Questions can be submitted through the project website or by calling the Project Information telephone number. The POC holds the primary responsibility for coordinating the activities defined in this CIOP and serves as the liaison between community members and the Alliance.

- Media Contact Database. A database listing all print and broadcast publications serving the downtown area will be established. Components of the database will include names and titles of news personnel, phone numbers, email addresses, and special submittal requirements for information to be published or broadcasts and deadlines.
- Media Conferences and Interviews. If and when required, media conferences and interviews will be conducted on topics that warrant the creation of more public awareness than provided through the other methods defined in this CIOP.
- Media Tracking. The Project Information Contact will establish a media tracking system to capture all relevant broadcast and print articles concerning this project. This information will be archived and available for reproduction upon request.

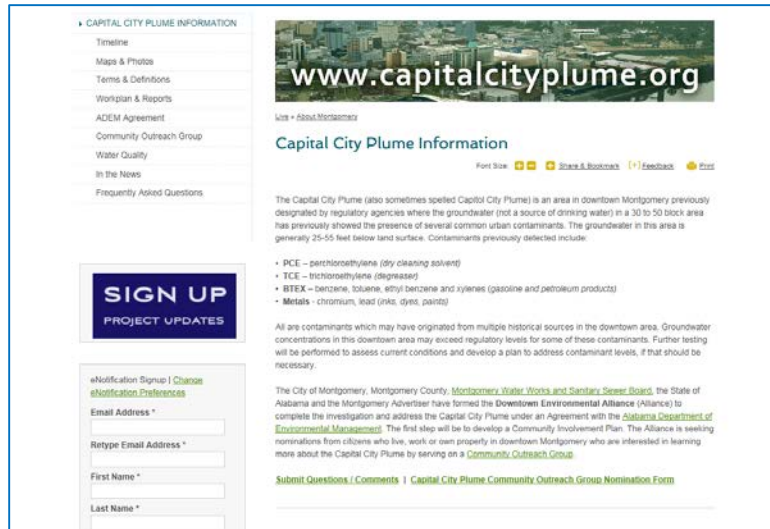
#### 4.2.2 Project Website

A website for the project is located at: [www.capitalcityplume.org](http://www.capitalcityplume.org) (Figure 4-1). The website is the primary stationary source of project-related information. The website includes the following information and is updated as new information of potential interest to the community becomes available:

- Capital City Plume history and background
- Project timeline
- Project-related technical information
- Copy of the ADEM and the Downtown Environmental Alliance Agreement
- Copy of Work Plans and Reports
- Maps
- Water Quality information
- Answers to frequently asked questions (FAQs)
- Links to regulatory agencies involved with the Capital City Plume
- Project Contact Information
- Link to sign up for Project Updates
- Community Outreach Group page with nomination form and updates about the Community Outreach Group (COG)
- Link to contact the Alliance for additional information, comments, or questions

## 4.2.3 Community Outreach Group

*Figure 4-1: Screenshot of Capital City Plume Project Website Advertising COG Nomination Process*



The Alliance will hold meetings for a core group of stakeholders to be known as the Community Outreach Group. Meetings will focus on helping COG members develop a technical understanding of the site so they can serve as intermediates between the potentially affected community and the Alliance. Members of the COG are tasked with assisting in keeping the community informed about project-related information and progress. Up to 10 representatives, who either live, work, or own property in downtown Montgomery will be selected to serve as members of the COG.

Representatives are to be nominated or identified and factors such as length of time living or working downtown, representation of a specific group or area (church, business group, or historic organization), and interest in the project will be considered by an independent panel in the selection of membership. COG members will meet with project technical consultants and representatives from regulatory agencies as the project progresses. An independent consultant will facilitate COG activities.

COG meetings are to allow for the exchange of information with members of the community and enable members to discuss site issues and activities about project plans with decision makers. Members are to communicate information from meetings, including that from technical discussions, to others in the community. The goals of the COG are:

- 1) Provide a network of individuals informed about the technical aspects of the environmental investigation process and project, who can communicate with others in the community to spread factual pertinent, project-related information.
- 2) Provide a network of individuals who can listen to peers within the community and provide feedback from others to help the Alliance understand the community's perspective and consider it as project-related decisions are made.

COG nomination forms were available on the project website and distributed in public areas throughout the site area, including City Hall, County Annex III, the MWWSSB office, The Advertiser Company, and the downtown branch of the Public Library. A copy of the nomination form is in Appendix B. Nominations were open for 45 days, from October 1 through November 15, 2015.

Figure 4-2: Flyer Advertising COG Nomination Process



The COG nomination process was advertised through extensive outreach efforts including flyers posted in the downtown area (Figure 4-2), media boards in downtown restaurants, the Montgomery Mayor’s Media briefing on October 1, 2015, Chamber of Commerce and Downtown Business Association meetings, newspaper articles, Capital City Connection (a program on local cable television), and links on the Downtown Business Association and Montgomery Area Chamber of Commerce websites. An independent selection panel, comprised of leaders in the community who have no personal vested interest in the project or outreach efforts, are to select members of the COG from the nominations submitted or solicitation of other members to represent the various interests in the project

Once members are selected, an orientation meeting will be held and future meetings scheduled based on project activities. The COG will meet as often as needed to educate the group about the project and address questions and concerns. Representatives from ADEM will be invited to attend COG meetings and to present information to members at some meetings.

#### 4.2.4 Interested Party and Stakeholder Database

The Alliance will develop and maintain a database of individuals and groups that may have interest in the project because of the proximity of their residences and/or work sites, expressed interest (through sign up on the website or personal interviews), or direct involvement in project-related activities.

The database will serve as the source of contact information for project-related mailings, meeting announcements, emails, or other communications to persons or groups expressing interest in the project.

#### 4.2.5 Public Document Repository

The public repository serves as a source for all information that has been made available on the project, as well as other background and publically available information, for anyone who is interested in reviewing detailed information. Project-related documents and information are maintained on the project website located at: [capitalcityplume.org](http://capitalcityplume.org). Additionally, Copies of work plans and reports also will be available for public access at the downtown public library.



Project documents, including historical notices and work plans, are available on ADEM’s eFile system located at: <http://app.adem.alabama.gov/eFile/>. To find the project-related documents, check the box for “Land,” check “master ID,” and enter “44890” in the “Facility Box.” Alternatively, check “Name” and enter “Capital City Plume” in the “Facility Box.” Users should note that in the past, both “Capitol” and “Capital” were used in the site name so documents may contain the alternative spellings.

#### 4.2.5 Bill Inserts

If needed, informational inserts with project-related information and/or scheduled events will be prepared for distribution in water bills for meters within the project area.

#### 4.2.6 Newsletters, Fact Sheets, and Other Printed Materials

The Alliance will utilize opportunities for communicating project-related information in existing newsletters and organizational publications, as appropriate and as space is available. Examples of publications to be used are the ADEM Insider (Figure 4-3) and the Montgomery Area Chamber of Commerce’s email newsletter.

#### 4.2.7 Social Media Monitoring and Posts

Social media sites for organizations identified as having members with potential interest in the Capital City Plume, such as the Downtown Montgomery Business Association, will be monitored periodically for posts related to the project. An example is shown in Figure 4-4. As needed and appropriate, issues of concern mentioned in posts will be addressed using the communication methods defined in the CIOP.

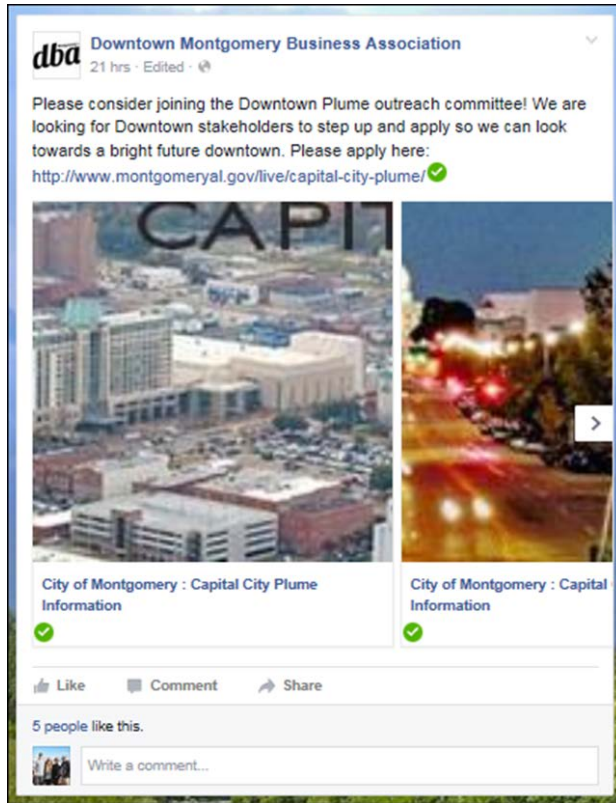
Figure 4-3: Example Newsletter Article, Chamber of Commerce Newsletter



Figure 4-4 Example Newsletter Article, ADEM Insider



Figure 4-5: Example Social Media Post



In addition, as appropriate, and as agreeable to social media site administrators for these organizations, project-related information will be posted to keep those who use social media as their primary news source informed.

#### 4.2.8 Project Documentation

Images of the investigation and public outreach activities will be placed on the project website.

#### 4.2.9 Public Notices

Following the remedial alternatives evaluation, a remedy will be recommended and reviewed with the COG. After ADEM’s review of the plan, the remedial action plan will be placed on Public Notice by ADEM, following ADEM’s standard protocol. If comments are received, ADEM will address those comments for inclusion in the project administrative record.

#### 4.2.10 Public Meetings

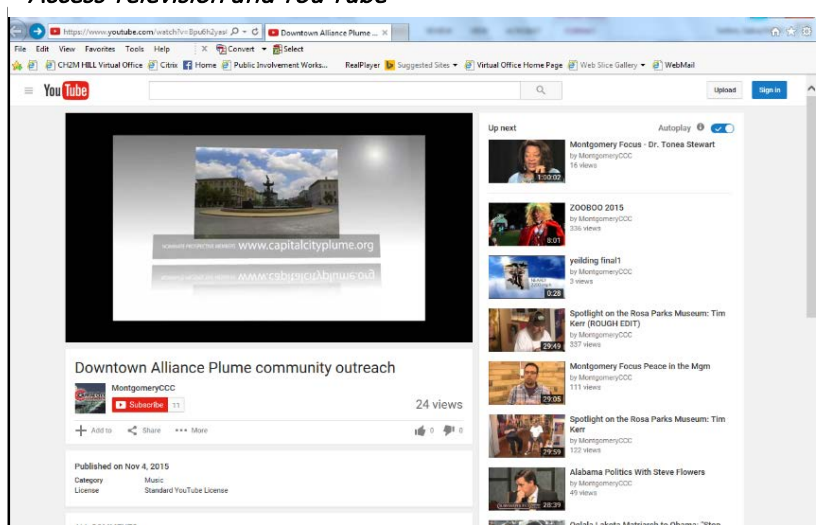
Public meetings allow the community to gather and share their understanding and questions on

the project. Public meetings provide both a comprehensive technical presentation and public forum for discussion and comment on the investigation process. Public meetings will be scheduled if needed or requested during ADEM’s public notice process.

#### 4.2.11 Announcements in Printed and Broadcast Media and YouTube Uploads

Members of the Alliance have access to opportunities, if needed, to place project-related announcements in local news outlets. These include the local public access governmental cable channels. Announcements made through these outlets also can be uploaded to YouTube and posted on the project website.

Figure 4-6: Screenshot of Project-Related Announcement for Public Access Television and YouTube



## Section 5 Community Involvement Schedule

Based on the Agreement between the Alliance and ADEM and project progress to-date, a preliminary schedule for community involvement has been established. This schedule, shown in Table 5-1, may be amended based on the need to be responsive to community requests for information or if project circumstances change. It is to be noted that some CIOP activities, as described in Section 4 Community Involvement Action Plan, are to be performed if and as needed, or as opportunities to accomplish them are available. For the purposes of the CIOP schedule, these activities are noted and marked on the schedule as ongoing efforts.

Table 5-1: CIOP Implementation Schedule Year 1

CIP ACTIVITY	WORKPLANNING PHASE	INVESTIGATION PHASE	EVALUATION OF REMEDIAL ALTERNATIVES PHASE
Develop Community Involvement Plan (CIOP) and Submit to ADEM for Approval <i>Responsibility: Alliance</i>	○		
CIOP Plan Review, Comments, and Approval <i>Responsibility: ADEM</i>	○		
Assign Key Project Contact <i>Responsibility: Alliance</i>	○		
Develop and Launch Project Website <i>Responsibility: Alliance</i>	○		
Website Updates <i>Responsibility: Alliance</i>		AS NEEDED	
Develop Interested Party/Stakeholder Database <i>Responsibility: Alliance</i>	○		
Establish Public Document Repository on eFile System <i>Responsibility: ADEM</i>	○		
Social Media Monitoring <i>Responsibility: Alliance</i>	○	○	○
Posts on Social Media Sites <i>Responsibility: Alliance</i>	○		AS NEEDED

CIP ACTIVITY	WORKPLANNING PHASE	INVESTIGATION PHASE	EVALUATION OF REMEDIAL ALTERNATIVES PHASE
Project Documentation <i>Responsibility: Alliance</i>		○	○
Public Notices <i>Responsibility: ADEM</i>		AS NEEDED	
Public Meetings <i>Responsibility: ADEM</i>		AS NEEDED	
Newsletter Articles <i>Responsibility: Alliance</i>		AS NEEDED	
Fact Sheets <i>Responsibility: Alliance</i>		AS NEEDED	
Bill Inserts <i>Responsibility: Alliance</i>		AS NEEDED	
Announcements in Printed and Broadcast Media and YouTube Uploads <i>Responsibility: Alliance</i>		AS NEEDED	

Appendix A  
Capital City Plume Questionnaire



# Community Involvement Plan Interview Questions

Date: \_\_\_\_\_

Name: \_\_\_\_\_

Address: \_\_\_\_\_

Email: \_\_\_\_\_

Telephone: \_\_\_\_\_

Position: \_\_\_\_\_

Following are questions to be used to guide the community interviews. The questions were tailored to the person being interviewed and the time they had available.

1. Do you live, work or own property in downtown Montgomery?
  - a. If yes, where and how long?
  
2. Are you familiar with the Capital City Plume (CCP)? (Describe what you believe the CCP to be)
  
3. How would you rank your knowledge of the CCP?
  - a. Very knowledgeable
  - b. Knowledgeable
  - c. Limited knowledge
  - d. No knowledge
  
4. What is the source of your information?
  
5. Do you have any specific concerns about the CCP?
  
6. Do you have ideas about how to address the CCP?
  
7. Would you like to receive additional information about the Capital City Plume?
  - a. If yes, identify best mode of communication. (email or physical address, website, newspaper or television, meeting).
  
8. Is there any other person, group or organization in the community that you think we should talk to as part of this survey to develop the community involvement plan.

Appendix B  
Community Outreach Group Member  
Nomination Form

# Capital City Plume Community Outreach Group Membership Nomination Form and General Information

The Downtown Environmental Alliance (the Alliance) will facilitate a group of interested citizens to learn about the Capital City Plume (CCP) project. The Alliance is seeking nominations of interested citizens who either live, work or own property in downtown Montgomery to serve as a Community Outreach Group (COG). The COG serves to aid the local community in understanding the work being performed on the CCP project. The COG provides a link between the community and the Alliance and assists in keeping the downtown community informed about project activities.

## Nominations

The attached nomination form can be used to nominate either yourself or another person or you can complete the on-line form at [www.capitalcityplume.org](http://www.capitalcityplume.org) by clicking on the Community Involvement tab. Nominations for COG membership are open from October 1-November 15, 2015. A neutral panel representing downtown Montgomery will review the nominations and make recommendations/select the members. All nominees will be contacted after the selections are made.

## Membership

The COG will consist of up to 10 members. Members of the COG should represent diverse interests in downtown Montgomery, such as residents, employees, property owners, developers, Church representatives, real estate representatives, bankers, downtown businesses, and historical property representatives.

## Responsibilities of Membership

COG representatives are expected to attend meetings to learn about project work and provide comments and questions from the community's point of view. COG representatives are asked to share information with others and exchange ideas and input with the Alliance.

Membership on the COG is voluntary. There is no compensation for serving on the COG.

Member names, addresses, and phone numbers will be posted on the CCP web page.

## Meetings

The COG will meet at various times throughout the project to learn and give input about project activities. Meetings will be scheduled at a downtown location. A schedule for meetings will be set based on members' schedules.

# Capital City Plume Community Outreach Group Membership Nomination Form

Date: \_\_\_\_\_

*(Please print)*

NOMINEE NAME \_\_\_\_\_

ADDRESS: \_\_\_\_\_

DAY PHONE: \_\_\_\_\_ NIGHT PHONE: \_\_\_\_\_ CELL PHONE: \_\_\_\_\_

**Check all that apply**

Property Owner: \_\_\_\_\_ Address of Property: \_\_\_\_\_

Employee: \_\_\_\_\_ Employer: \_\_\_\_\_ Address: \_\_\_\_\_

Downtown Resident: \_\_\_\_\_ Address: \_\_\_\_\_

Other: \_\_\_\_\_

REASON FOR NOMINATION: \_\_\_\_\_

\_\_\_\_\_

\_\_\_\_\_

\_\_\_\_\_

\_\_\_\_\_

\_\_\_\_\_

Use back of this form to continue information)

*(Please complete if you are nominating someone other than yourself)*

YOUR NAME: \_\_\_\_\_

ADDRESS: \_\_\_\_\_

DAY PHONE: \_\_\_\_\_ NIGHT PHONE: \_\_\_\_\_ CELL PHONE: \_\_\_\_\_

E-MAIL ADDRESS: \_\_\_\_\_

Please complete form and mail to: **COG Nomination Committee, AC ESS, LLC, 4267 Lomac Street, Montgomery, AL 36106** or email to **acousins@acessllc.com**

For further information visit Project web site at: **[www.capitalcityplume.org](http://www.capitalcityplume.org)**