

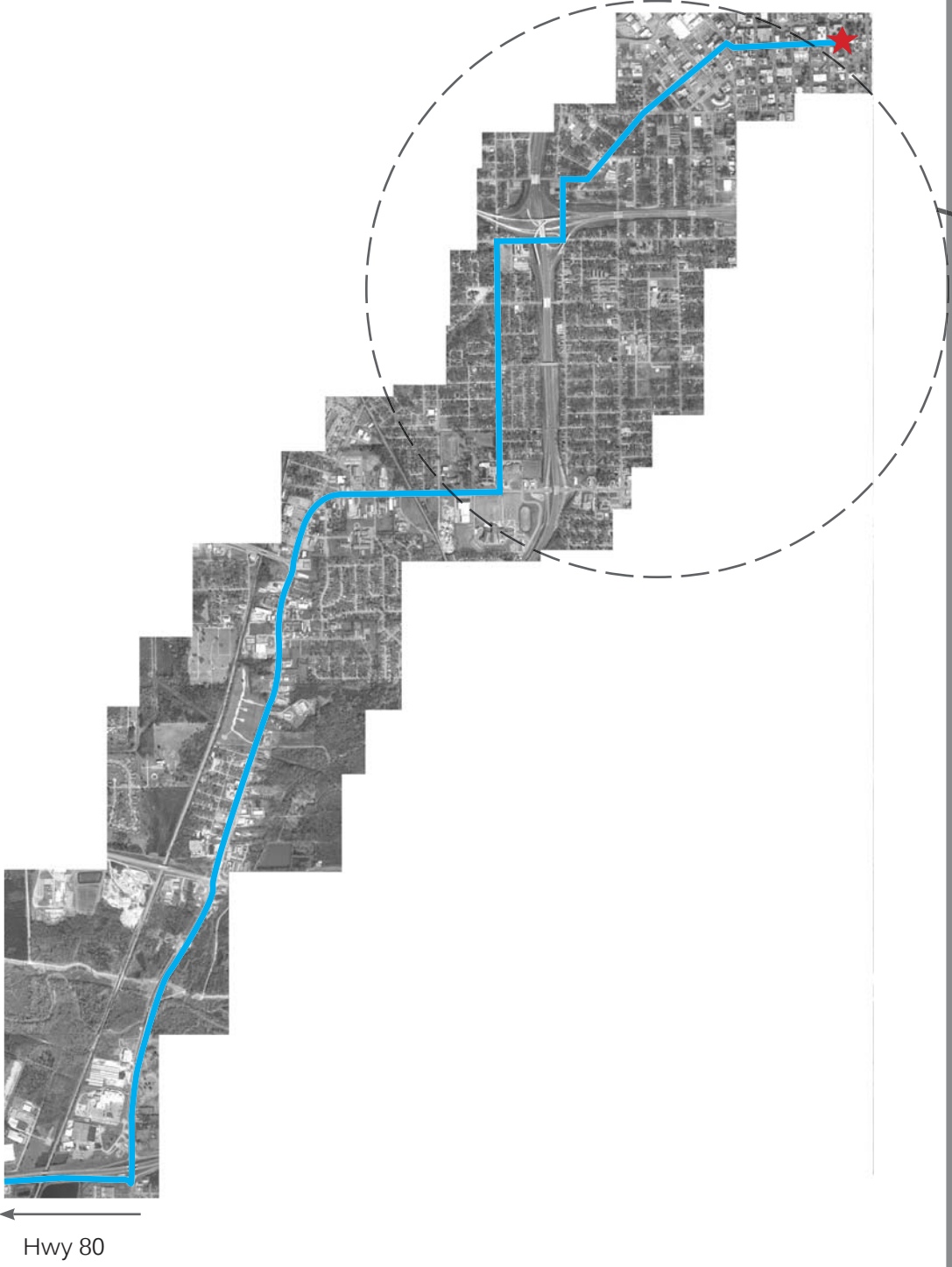
**CIVIL  
RIGHTS  
TRAIL**

50th Anniversary  
SELMA TO MONTGOMERY MARCH  
City of Montgomery

TRAIL IMPROVEMENTS



### Portion of the trail in the City of Montgomery

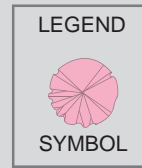


### Focus area of improvements

To capitalize on limited funds and get the largest impact for the City efforts, this portion of the trail is deemed the most pedestrian accessible and therefore receives all the improvements.



# TRAIL IMPROVEMENTS



- Create a canopy of blooming trees along various portions of the trail. Both Saucer Magnolia and Japanese Cherry Blossom trees bloom annually in February and early March, around the time of the Selma To Montgomery March.
- The blooms celebrate the trail as the first signs of spring time growth and signify new life and hope.
- They provide shade.
- Maintenance is minimal.

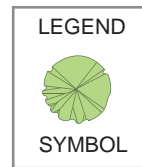
## Blooming Trees



Japanese Cherry Tree



Japanese Magnolia Tree Bloom



- Improve the quality of life by providing shade for sidewalks.
- Celebrate the trail through a noticeable grand canopy.
- Non-disiduous oaks keep green leaves throughout the year as a sign of life.

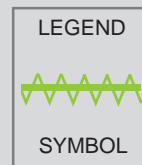
## Stately Trees



Oak Street Tree Canopy



Willow Oak Street Tree



- Solve the issue of an undesirable pedestrian route under overpasses through a green screen.
- Vines create a needed boundary for pedestrians, create a visual barrier for unsightly overpass areas, and reinforce a feeling of safety
- Replace the existing chain link fence that is in disrepair with an upgraded, 'green' fence option.
- Vines are fairly easy to maintain.

## Green Screen



Freestanding Greenscreen




Freestanding Greenscreen



Freestanding Greenscreen

**Signage**

LEGEND



SYMBOL

- Identify the historic route through clean, neatly branded "Civil Rights Trail" street signs
- Serve as a way finding guide through the many runs in the urban portion of the trail
- Indicate trail boundaries for visitors who may happen upon the trail
- New signs may be added to the existing street sign poles or replace existing street signs with new incorporated route signs
- Recommend replacing the street sign poles with upgraded cast iron poles



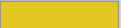
Example of added route street sign



Example of incorporated route street sign

**Crosswalks**

LEGEND




SYMBOL

- Decorative/ patterned crosswalks serve as both way finding and public art
- Will support the 'Civil Rights Trail' visual branding
- Crosswalks can be a strong visual aid for the 50th Anniversary March or geared toward a long term feature (will effect the type of material selected for the crosswalks)



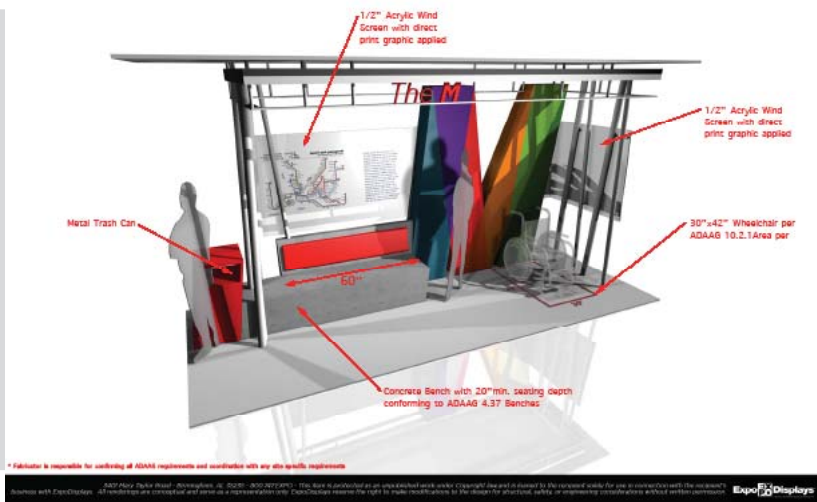
**Bus Stop**

LEGEND



SYMBOL

- Add new updated bus shelters
- Basic pedestrian improvements



## Sculpture Art



- Commission sculpture art to be installed at major trail intersections. The same piece should be duplicated at all sites for cohesiveness and cost effectiveness.
- A sculpture visually heightens the experience along the trail and celebrates the history through related imagery
- Create a landscaped area for the sculpture which provides stopping points along the trail to meditate
- Recommended forms of art include bronze casting or laser cut relief. Recommended subject matter: forms of the original marchers
- Laser cut relief art is a recognized style of the late Elizabeth Catlett, one of America's recognized African American artists who sculpted NYC's "Invisible Man"



"Invisible Man: A Memorial to Ralph Ellison" at Riverside Park, NYC



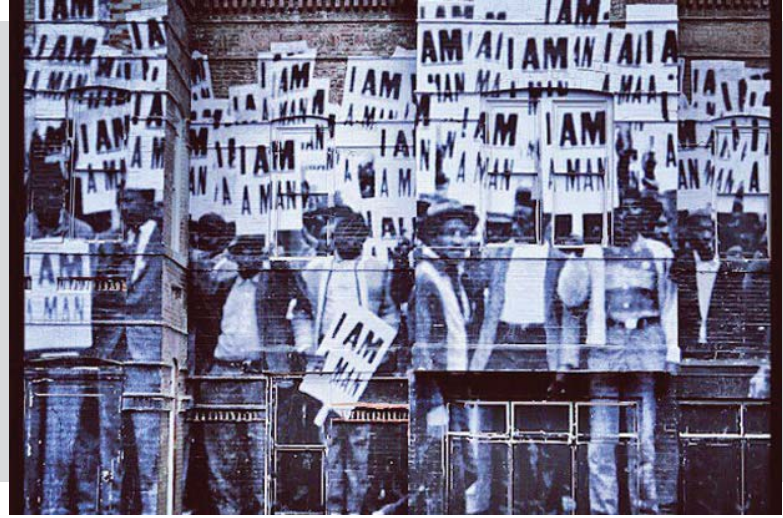
Laser cut public art



Cast bronze public art

## Mural Art

- Graphic images of marchers applied with wheatpaste, onto vacant buildings along S Holt St, Mobile St, and Dexter Ave
- Temporary art, installed for the 50th Anniversary celebration
- Low cost/ High visual impact
- Disguises unkept buildings while telling the story of the marchers



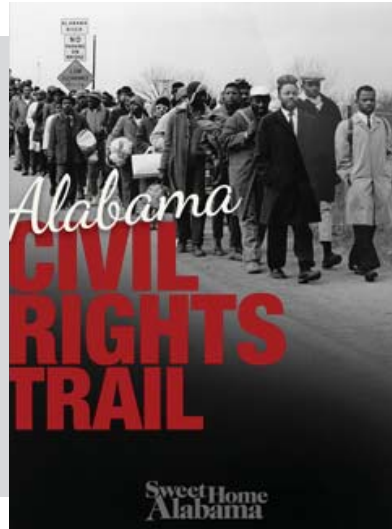
Auburn student rendering



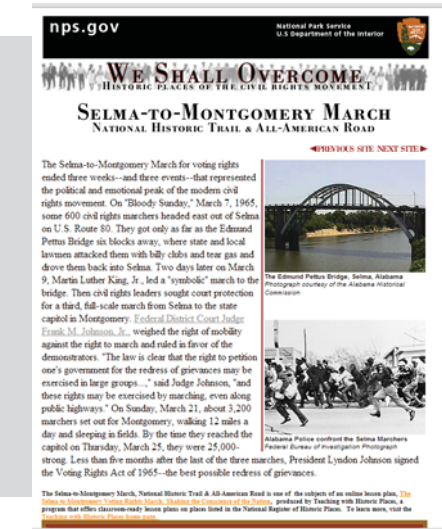
Auburn student rendering

## Civil Rights Trail Branding

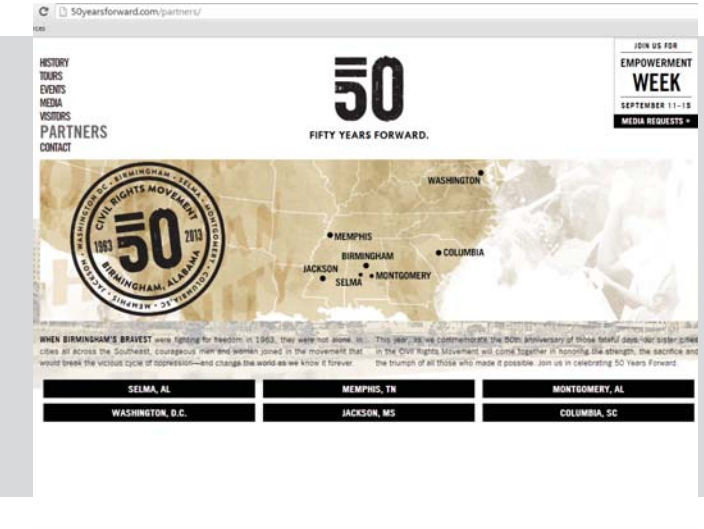
- Cohesive Trail branding to be designed for all trail graphic improvements and used for 50th Anniversary event print & recommended website creation
- Only existing trail graphics: Alabama Tourism Department's smart phone app, NPS web page, Birmingham Civil Rights Anniversary web page



AL Tourism Dept app



NPS web page



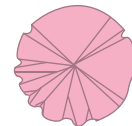
Birmingham Civil Rights Anniversary web page

# PROJECT SCOPE:

To provide priority improvements to priority trail segments, then as funds allow add secondary trail improvements

In addition to City of Montgomery improvements, businesses/ property owners along the trail will be notified of the efforts and encouraged to participate in trail improvements by updating/ upgrading their properties adjacent to the trail

## LEGEND



## PRIORITY IMPROVEMENTS

PRIORITY TRAIL SEGMENTS: Fairview Avenue at Hill St to Oak Street at Stephens Street and W Jefferson Davis Avenue at Oak Street to Mobile Street at Five Points

SECONDARY TRAIL SEGMENTS

Signage: New street signs with 'Civil Rights Trail' branding

Painted Crosswalks - color & pattern coordinate with branding

Curb & Gutter - reclaim all existing along entire trail & provide new in priority segments (see plan)

New Sidewalks - to connect trail in priority segments (see plan)

Street Trees - new blooming japanese magnolias/ cherry blossoms and oak trees in priority segments

Landscaping - general maintenance along entire trail (may require coordination with ALDOT)

Green Screen - landscaped fencing under interstates  
Art: wheat paste street art on various abandoned buildings

Commemorative Art: Sculpture at priority segments

Various Street Improvements: site specific, refer to key notes.

Outreach: engage businesses along trail to encourage private upgrades their properties for the anniversary

## SECONDARY IMPROVEMENTS

Signage: Historic content informational signs at significant points of interest along the trail (see plan)

Painted Street Striping: along entire trail (coordinate with other counties & ALDOT); coordinate color with branding

Street Trees - new blooming japanese magnolias/ cherry blossoms along remaining portion of Oak Street

Remove various unsightly structures/ abandon signage poles along trail

Commemorative Art: Sculpture at secondary segments

New Bus Shelters - along Fairview Ave

Painted overpasses - existing scheme

# TRAIL FOCUS AREA: PART 1 OF 10

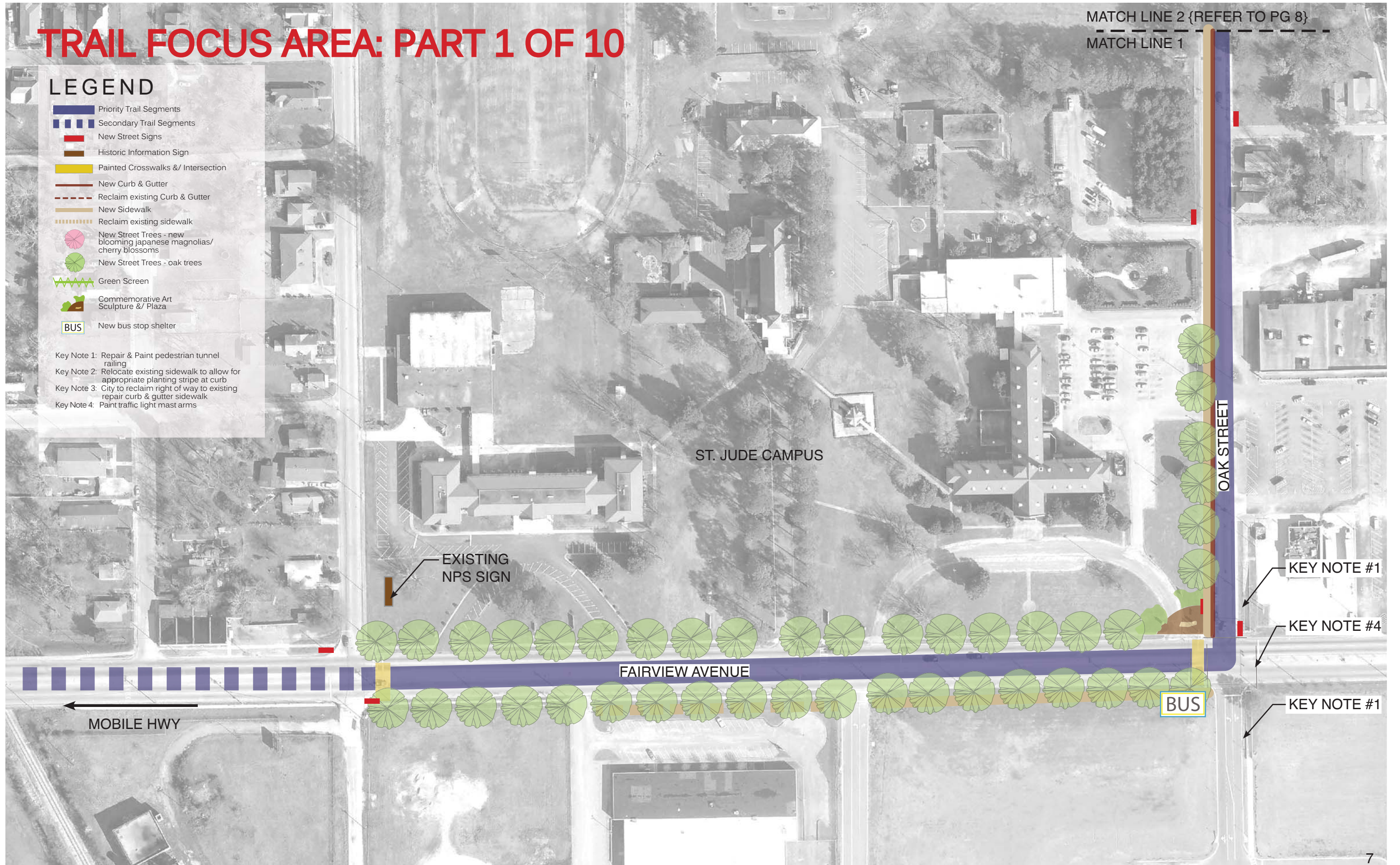
MATCH LINE 2 {REFER TO PG 8}

MATCH LINE 1

## LEGEND

-  Priority Trail Segments
-  Secondary Trail Segments
-  New Street Signs
-  Historic Information Sign
-  Painted Crosswalks &/ Intersection
-  New Curb & Gutter
-  Reclaim existing Curb & Gutter
-  New Sidewalk
-  Reclaim existing sidewalk
-  New Street Trees - new blooming japanese magnolias/ cherry blossoms
-  New Street Trees - oak trees
-  Green Screen
-  Commemorative Art Sculpture &/ Plaza
-  New bus stop shelter

- Key Note 1: Repair & Paint pedestrian tunnel railing
- Key Note 2: Relocate existing sidewalk to allow for appropriate planting stripe at curb
- Key Note 3: City to reclaim right of way to existing repair curb & gutter sidewalk
- Key Note 4: Paint traffic light mast arms



ST. JUDE CAMPUS

EXISTING NPS SIGN

FAIRVIEW AVENUE

OAK STREET

MOBILE HWY

BUS

KEY NOTE #1

KEY NOTE #4

KEY NOTE #1

# TRAIL FOCUS AREA: PART 2 OF 10

MATCH LINE 4 {REFER TO PG 9}

MATCH LINE 3

## LEGEND

-  Priority Trail Segments
-  Secondary Trail Segments
-  New Street Signs
-  Historic Information Sign
-  Painted Crosswalks &/ Intersection
-  New Curb & Gutter
-  Reclaim existing Curb & Gutter
-  New Sidewalk
-  Reclaim existing sidewalk
-  New Street Trees - new blooming japanese magnolias/ cherry blossoms
-  New Street Trees - oak trees
-  Green Screen
-  Commemorative Art Sculpture &/ Plaza
-  New bus stop shelter

- Key Note 1: Repair & Paint pedestrian tunnel railing
- Key Note 2: Relocate existing sidewalk to allow for appropriate planting stripe at curb
- Key Note 3: City to reclaim right of way to existing repair curb & gutter sidewalk
- Key Note 4: Paint traffic light mast arms

STELLA STREET

COUNCIL STREET

STEPHENS STREET

OAK STREET

ERSKINE STREET

MATCH LINE 3

MATCH LINE 2 {REFER TO PG 7}



# TRAIL FOCUS AREA: PART 3 OF 10

MATCH LINE 5 {REFER TO PG 10}

TRAVIS STREET

MATCH LINE 4

LINCOLN TERRACE

OAK STREET

EARLY STREET

BUS

DOROTHY STREET

MATCH LINE 4

MATCH LINE 3 {REFER TO PG 8}

## LEGEND

- Priority Trail Segments
- Secondary Trail Segments
- New Street Signs
- Historic Information Sign
- Painted Crosswalks &/ Intersection
- New Curb & Gutter
- Reclaim existing Curb & Gutter
- New Sidewalk
- Reclaim existing sidewalk
- New Street Trees - new blooming japanese magnolias/ cherry blossoms
- New Street Trees - oak trees
- Green Screen
- Commemorative Art Sculpture &/ Plaza
- BUS New bus stop shelter

- Key Note 1: Repair & Paint pedestrian tunnel railing
- Key Note 2: Relocate existing sidewalk to allow for appropriate planting stripe at curb
- Key Note 3: City to reclaim right of way to existing repair curb & gutter sidewalk
- Key Note 4: Paint traffic light mast arms

# TRAIL FOCUS AREA: PART 4 OF 10

MATCH LINE 6 {REFER TO PG 11}

MATCH LINE 5

MATCH LINE 5

MATCH LINE 4 {REFER TO PG 9}

## LEGEND

-  Priority Trail Segments
-  Secondary Trail Segments
-  New Street Signs
-  Historic Information Sign
-  Painted Crosswalks &/ Intersection
-  New Curb & Gutter
-  Reclaim existing Curb & Gutter
-  New Sidewalk
-  Reclaim existing sidewalk
-  New Street Trees - new blooming japanese magnolias/ cherry blossoms
-  New Street Trees - oak trees
-  Green Screen
-  Commemorative Art Sculpture &/ Plaza
-  New bus stop shelter

- Key Note 1: Repair & Paint pedestrian tunnel railing
- Key Note 2: Relocate existing sidewalk to allow for appropriate planting stripe at curb
- Key Note 3: City to reclaim right of way to existing repair curb & gutter sidewalk
- Key Note 4: Paint traffic light mast arms

BETHEL MISSIONARY BAPTIST CHURCH

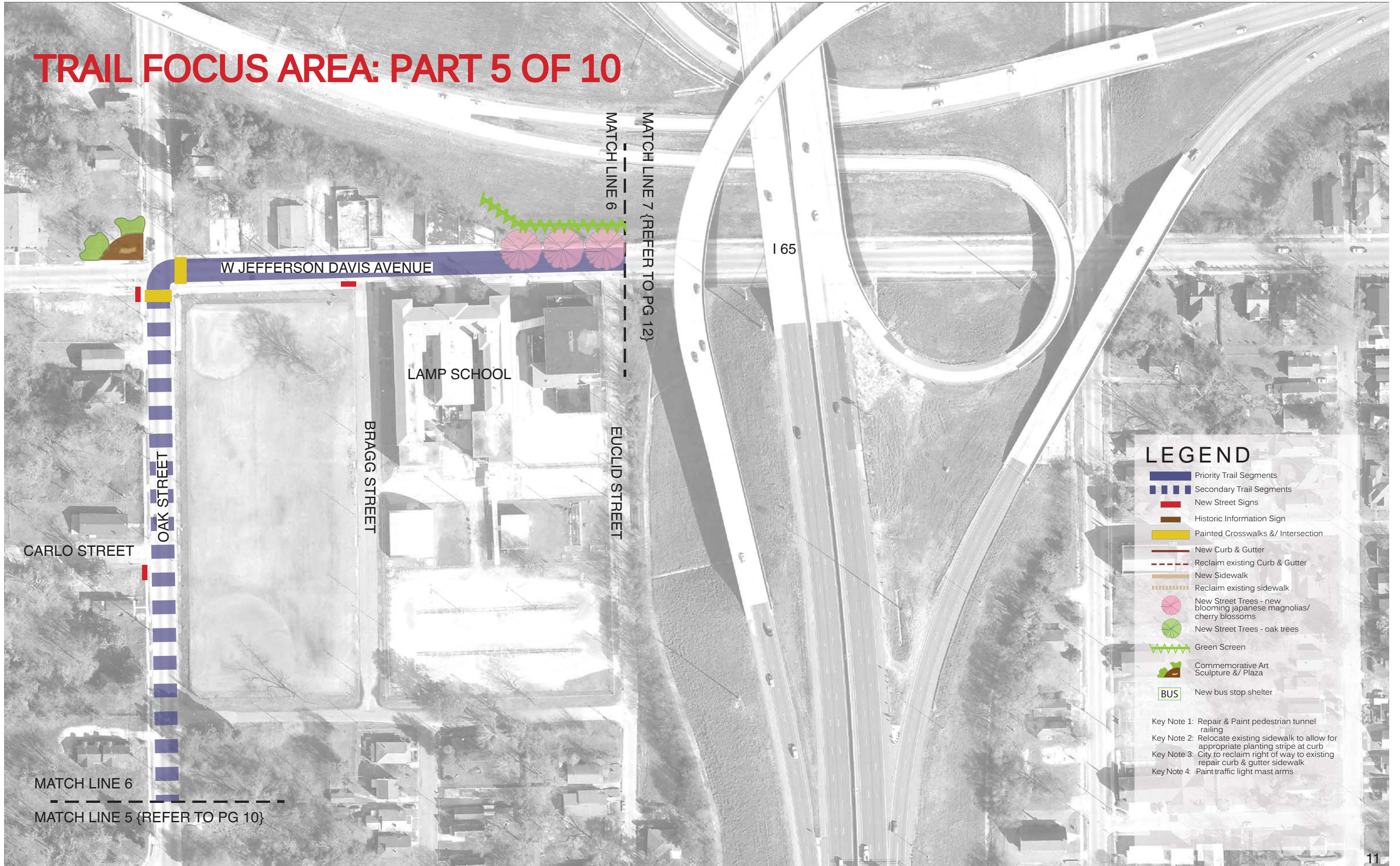
MOBILE ROAD

MILL STREET

OAK STREET

TRAVIS STREET

# TRAIL FOCUS AREA: PART 5 OF 10



## LEGEND

- Priority Trail Segments
- Secondary Trail Segments
- New Street Signs
- Historic Information Sign
- Painted Crosswalks &/ Intersection
- New Curb & Gutter
- Reclaim existing Curb & Gutter
- New Sidewalk
- Reclaim existing sidewalk
- New Street Trees - new blooming japanese magnolias/ cherry blossoms
- New Street Trees - oak trees
- Green Screen
- Commemorative Art Sculpture &/ Plaza
- BUS New bus stop shelter

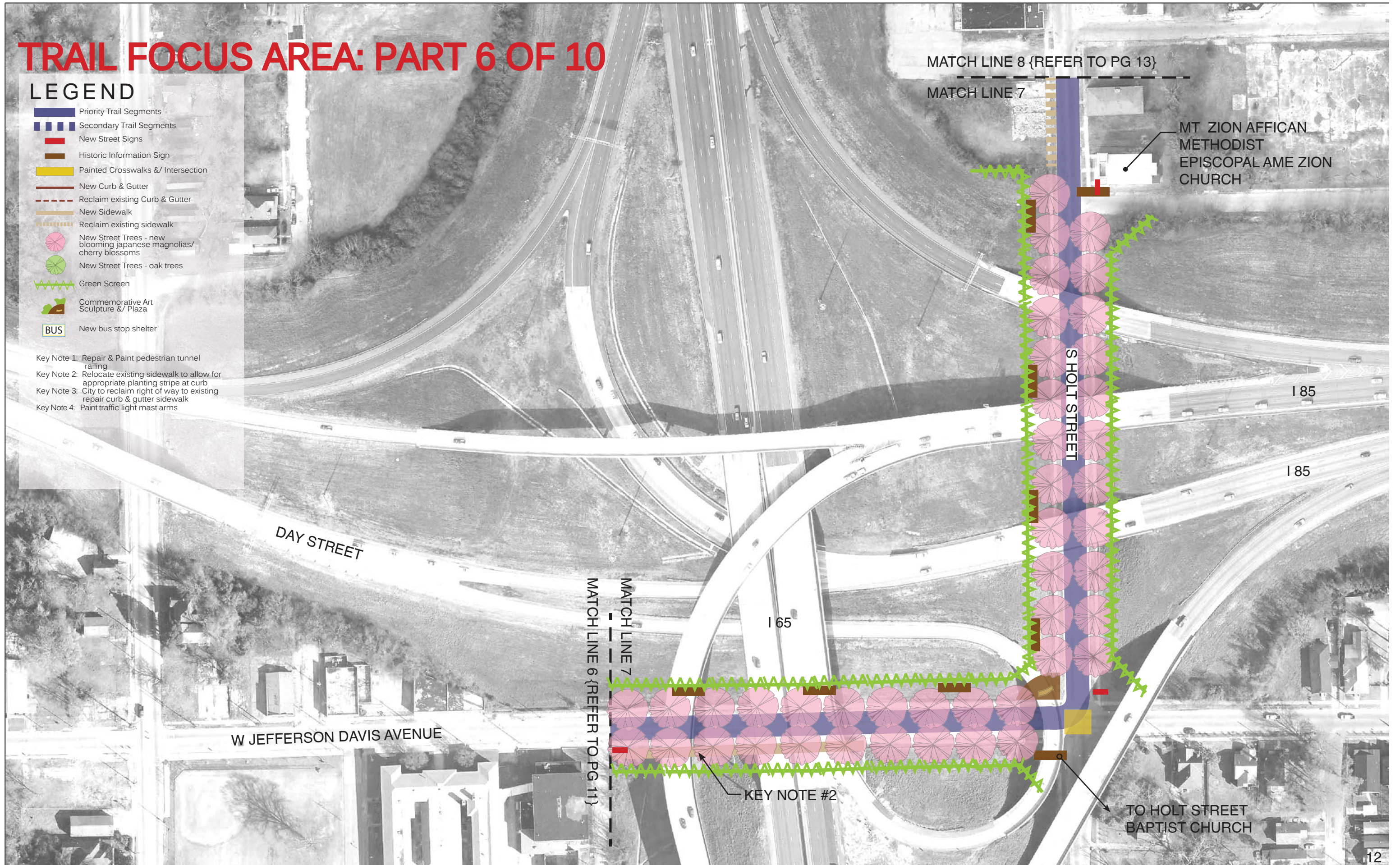
- Key Note 1: Repair & Paint pedestrian tunnel railing
- Key Note 2: Relocate existing sidewalk to allow for appropriate planting stripe at curb
- Key Note 3: City to reclaim right of way to existing repair curb & gutter sidewalk
- Key Note 4: Paint traffic light mast arms

# TRAIL FOCUS AREA: PART 6 OF 10

## LEGEND

-  Priority Trail Segments
-  Secondary Trail Segments
-  New Street Signs
-  Historic Information Sign
-  Painted Crosswalks &/ Intersection
-  New Curb & Gutter
-  Reclaim existing Curb & Gutter
-  New Sidewalk
-  Reclaim existing sidewalk
-  New Street Trees - new blooming japanese magnolias/ cherry blossoms
-  New Street Trees - oak trees
-  Green Screen
-  Commemorative Art Sculpture &/ Plaza
-  New bus stop shelter

- Key Note 1: Repair & Paint pedestrian tunnel railing
- Key Note 2: Relocate existing sidewalk to allow for appropriate planting stripe at curb
- Key Note 3: City to reclaim right of way to existing repair curb & gutter sidewalk
- Key Note 4: Paint traffic light mast arms

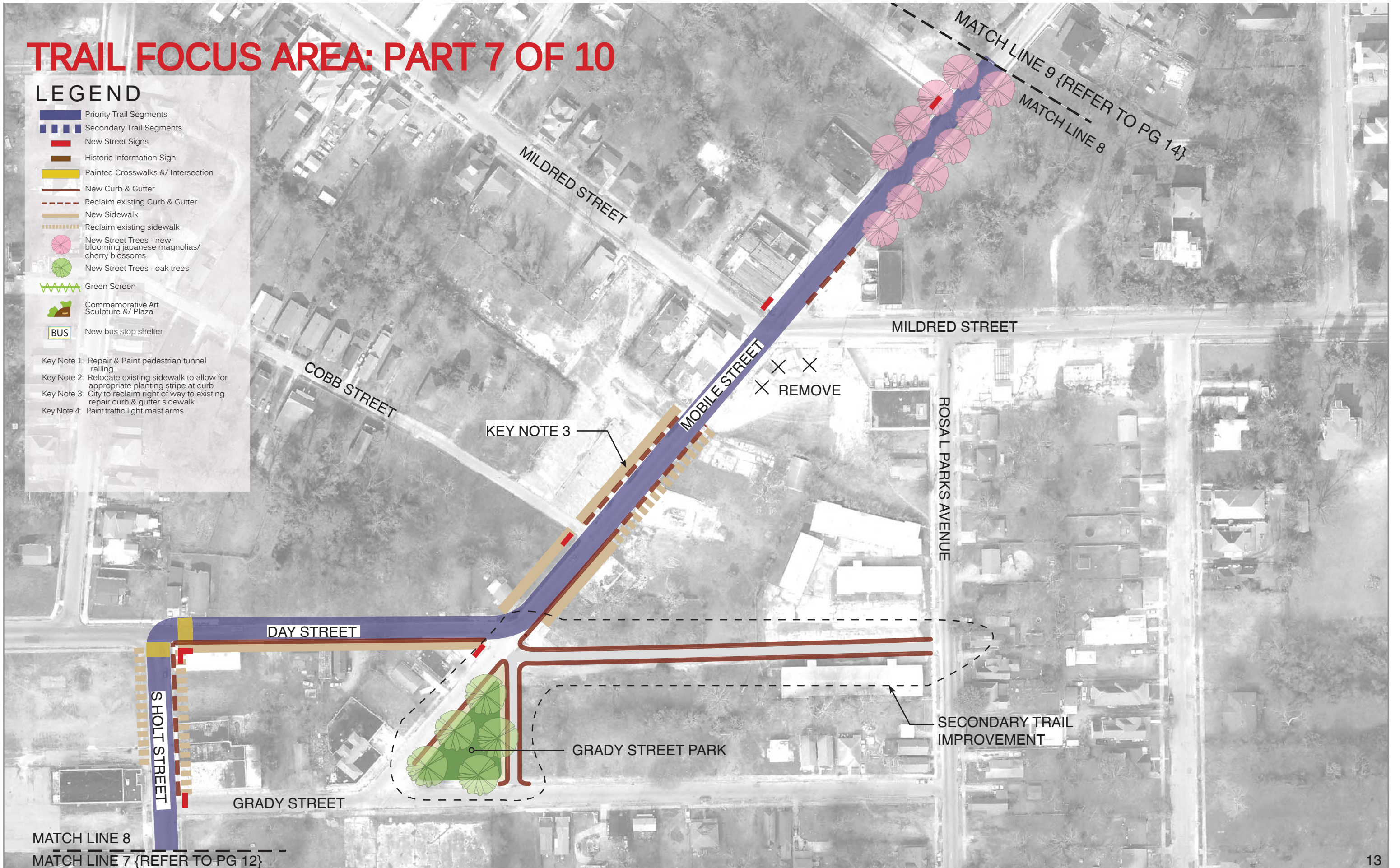


# TRAIL FOCUS AREA: PART 7 OF 10

## LEGEND

-  Priority Trail Segments
-  Secondary Trail Segments
-  New Street Signs
-  Historic Information Sign
-  Painted Crosswalks &/ Intersection
-  New Curb & Gutter
-  Reclaim existing Curb & Gutter
-  New Sidewalk
-  Reclaim existing sidewalk
-  New Street Trees - new blooming japanese magnolias/ cherry blossoms
-  New Street Trees - oak trees
-  Green Screen
-  Commemorative Art Sculpture &/ Plaza
-  New bus stop shelter

- Key Note 1: Repair & Paint pedestrian tunnel railing
- Key Note 2: Relocate existing sidewalk to allow for appropriate planting stripe at curb
- Key Note 3: City to reclaim right of way to existing repair curb & gutter sidewalk
- Key Note 4: Paint traffic light mast arms

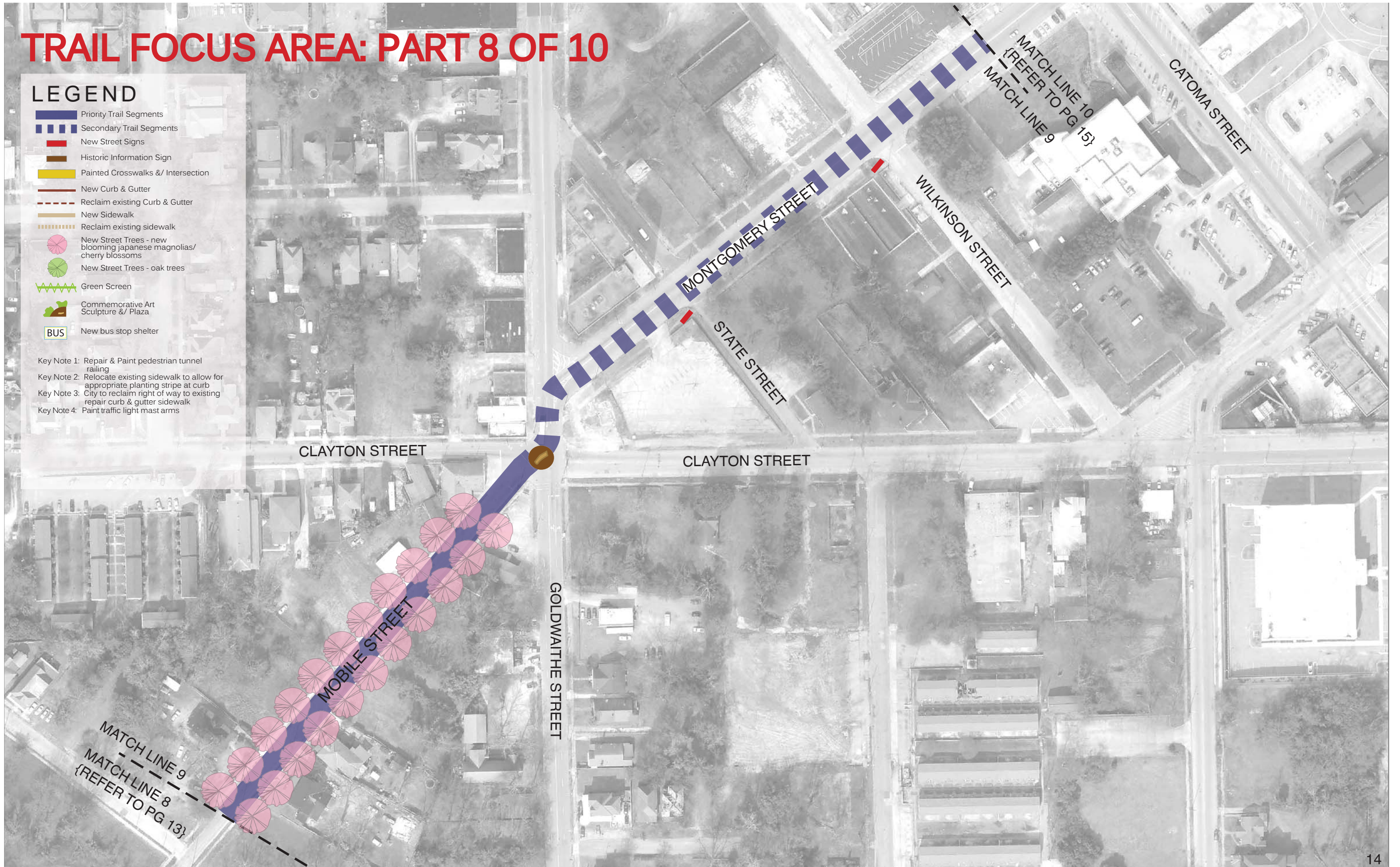


# TRAIL FOCUS AREA: PART 8 OF 10

## LEGEND

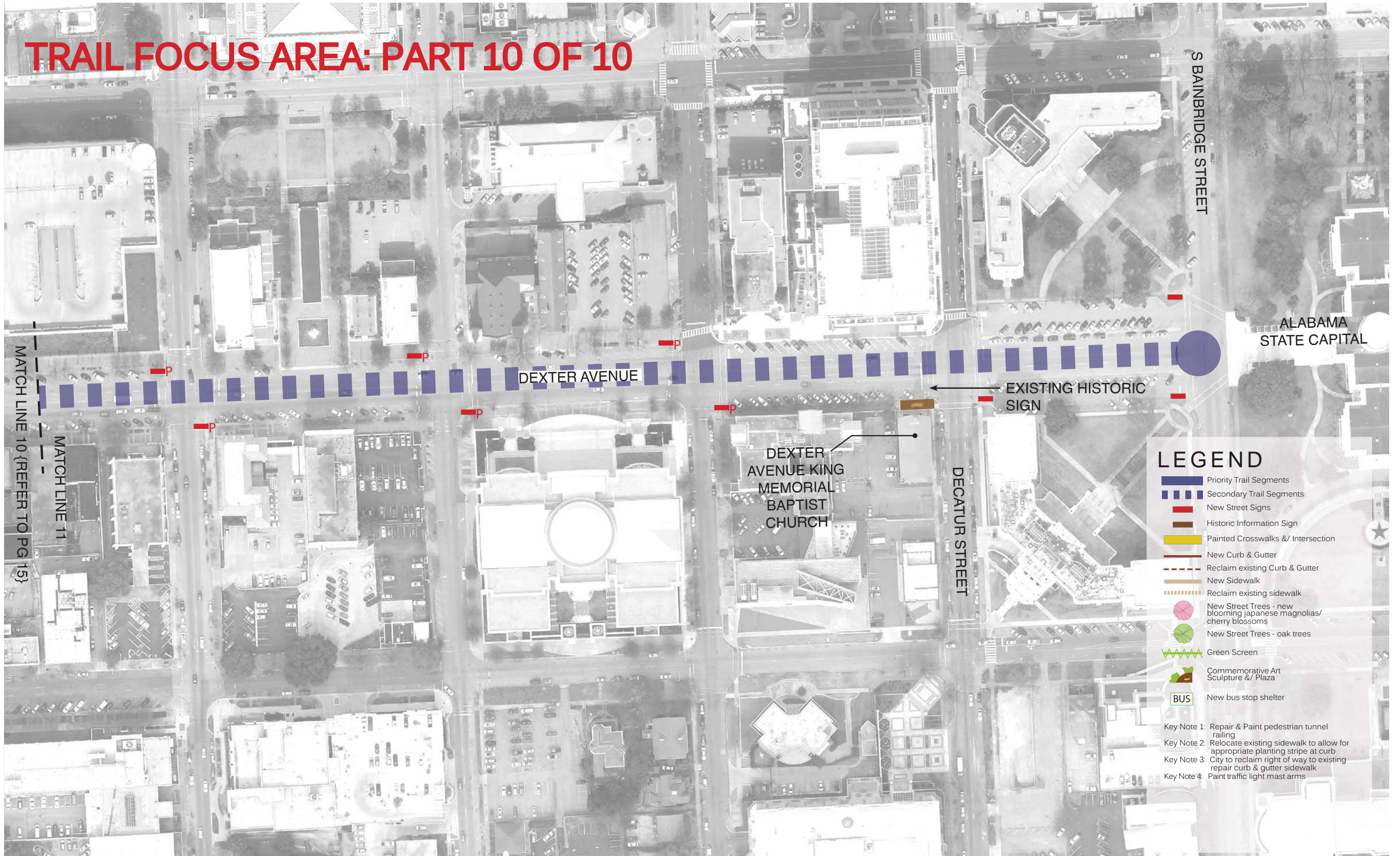
-  Priority Trail Segments
-  Secondary Trail Segments
-  New Street Signs
-  Historic Information Sign
-  Painted Crosswalks &/ Intersection
-  New Curb & Gutter
-  Reclaim existing Curb & Gutter
-  New Sidewalk
-  Reclaim existing sidewalk
-  New Street Trees - new blooming japanese magnolias/ cherry blossoms
-  New Street Trees - oak trees
-  Green Screen
-  Commemorative Art Sculpture &/ Plaza
-  New bus stop shelter

- Key Note 1: Repair & Paint pedestrian tunnel railing
- Key Note 2: Relocate existing sidewalk to allow for appropriate planting stripe at curb
- Key Note 3: City to reclaim right of way to existing repair curb & gutter sidewalk
- Key Note 4: Paint traffic light mast arms





# TRAIL FOCUS AREA: PART 10 OF 10



MATCH LINE 10 (REFER TO PG 15)

MATCH LINE 11

DEXTER AVENUE

DEXTER AVENUE KING MEMORIAL BAPTIST CHURCH

DECATUR STREET

S BAINBRIDGE STREET

ALABAMA STATE CAPITAL

EXISTING HISTORIC SIGN

## LEGEND

- Priority Trail Segments
- Secondary Trail Segments
- New Street Signs
- Historic Information Sign
- Painted Crosswalks &/ Intersection
- New Curb & Gutter
- Reclaim existing Curb & Gutter
- New Sidewalk
- Reclaim existing sidewalk
- New Street Trees - new blooming japanese magnolias/ cherry blossoms
- New Street Trees - oak trees
- Green Screen
- Commemorative Art Sculpture &/ Plaza
- New bus stop shelter

- Key Note 1: Repair & Paint pedestrian tunnel railing
- Key Note 2: Relocate existing sidewalk to allow for appropriate planting stripe at curb
- Key Note 3: City to reclaim right of way to existing repair curb & gutter sidewalk
- Key Note 4: Paint traffic light mast arms