

1055 Hyundai Boulevard

Applicant: Pamela A Gregorski

Contact Info: Pamela A. Gregorski development@slateinfra.com (302)421-6523

Case Number: DP-2024-008

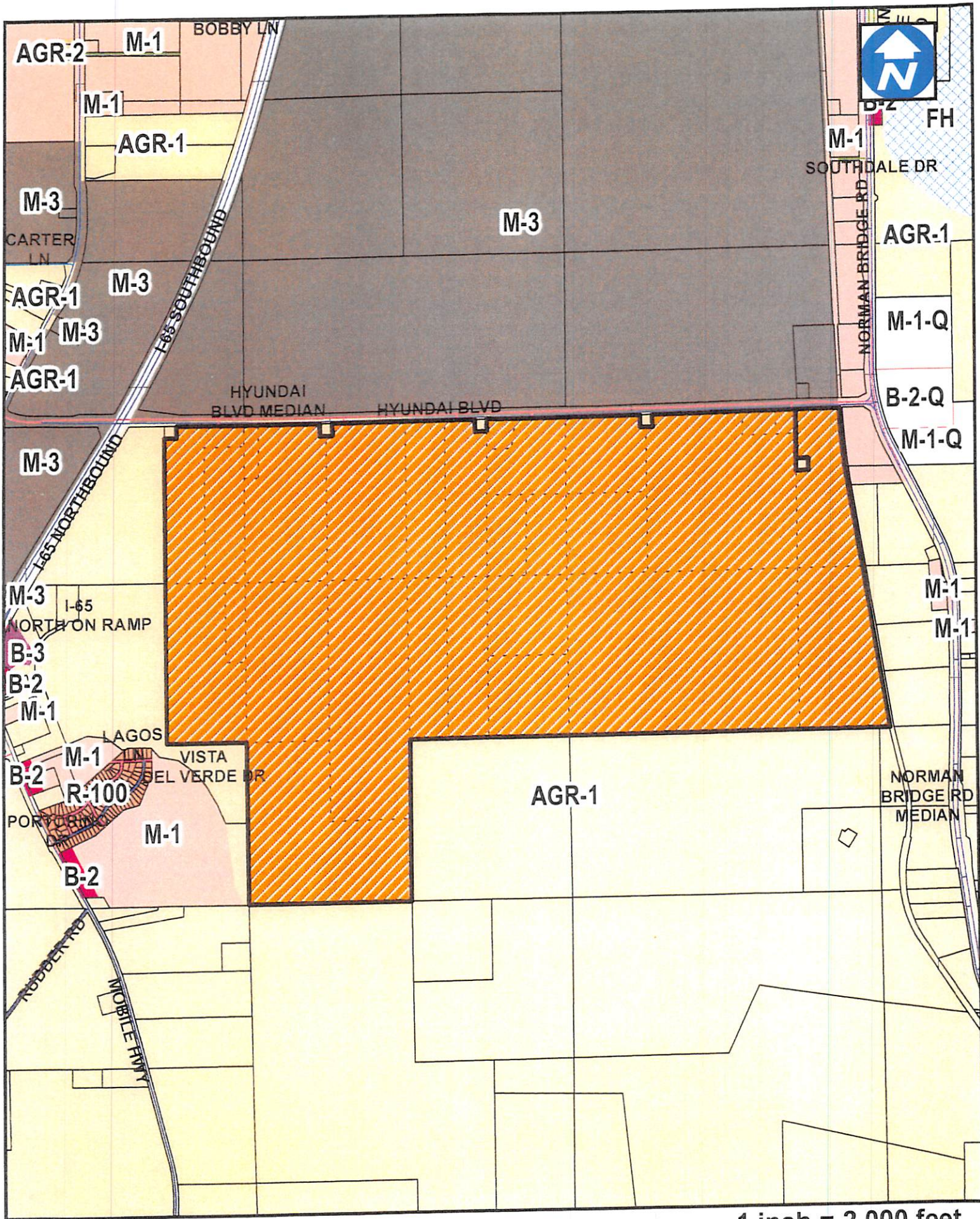
Project Name: Project Slate

Zoning: M-1 (Light Industry)

Description: Review of multiple structures that total 759,129 sq. ft. There are 263 paved parking spaces. There three (3) access drives on Hyundai Boulevard. All applicable requirements will be met.

Staff Comment(s): n/a

County Commission District: 2



1 inch = 2,000 feet

Site 

Item 

GENERAL NOTES

1. All work to be performed in accordance with the plans and specifications and approved by the local authority having jurisdiction.

2. The contractor shall be responsible for obtaining any necessary permits and fees from the local authority having jurisdiction.

SHEET LEGEND



DESCRIPTION	PROVIDED	REQUIRED
DOERF PARKING COUNT	1	1
ADW	1	1
ADW	1	1
DOERF PARKING COUNT	1	1
ADW	1	1
DOERF PARKING COUNT	1	1
ADW	1	1
DOERF PARKING COUNT	1	1
ADW	1	1
IBOS	1	1
IBOS	1	1
IBOS	1	1
IBOS	1	1
IBOS	1	1
IBOS	1	1
IBOS	1	1
IBOS	1	1
IBOS	1	1
IBOS	1	1
IBOS	1	1
IBOS	1	1
IBOS	1	1
IBOS	1	1
IBOS	1	1
IBOS	1	1

KEY PLAN



GENERAL NOTES

1. All work to be performed in accordance with the plans and specifications and approved by the local authority having jurisdiction.

2. The contractor shall be responsible for obtaining any necessary permits and fees from the local authority having jurisdiction.

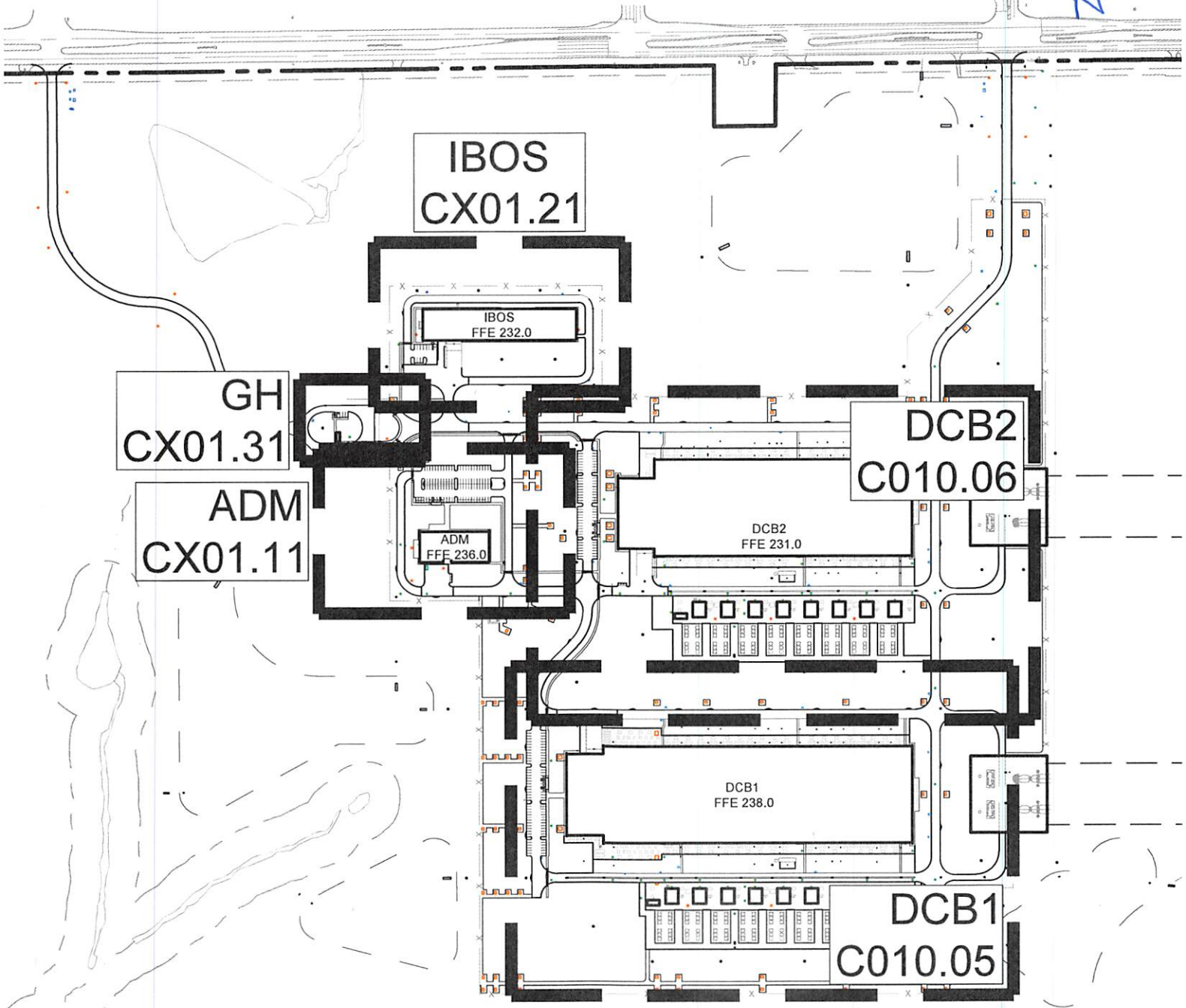
PROJECT

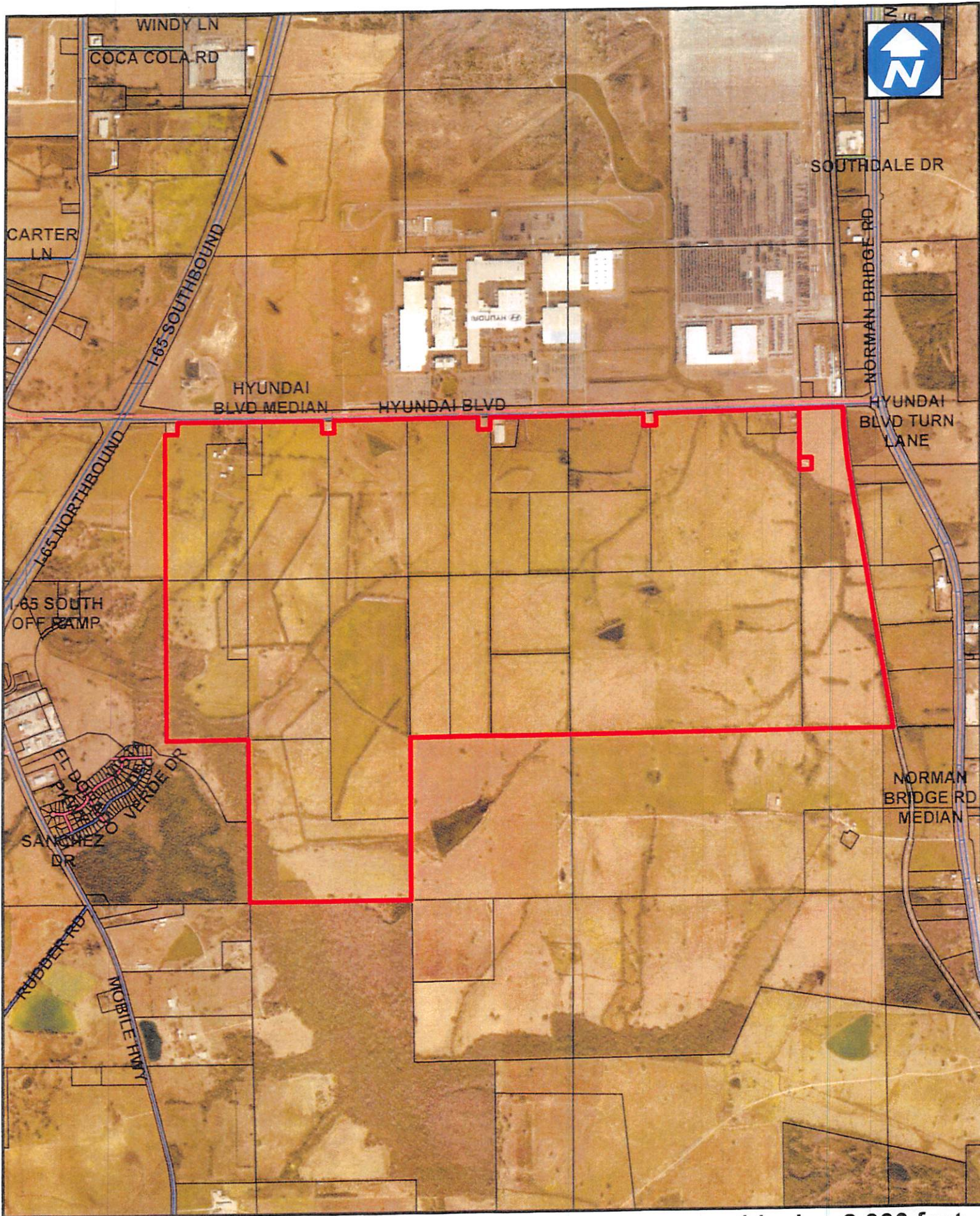
MAL-1-2

ENLARGED

DMC NO. C010.02

 OWNER	 ENGINEERING AND SURVEYING CONSULTANTS	 ARCHITECT	 ARCHITECT	 LANDSCAPE ARCHITECT	 TRAFFIC ENGINEER	 SECURITY CONSULTANT	 FOOD SERVICE CONSULTANT	 ASSESSOR
-----------	-------------------------------------------	---------------	---------------	-------------------------	----------------------	-------------------------	-----------------------------	--------------





Site 

1 inch = 2,000 feet

Item