

3116 Parliament Circle

Applicant: Gonzalez-Strength & Associates

Contact Info: Dalton Smith dsmith@gonzalez-strength.com (205)942-2486

Case Number: DP-2024-006

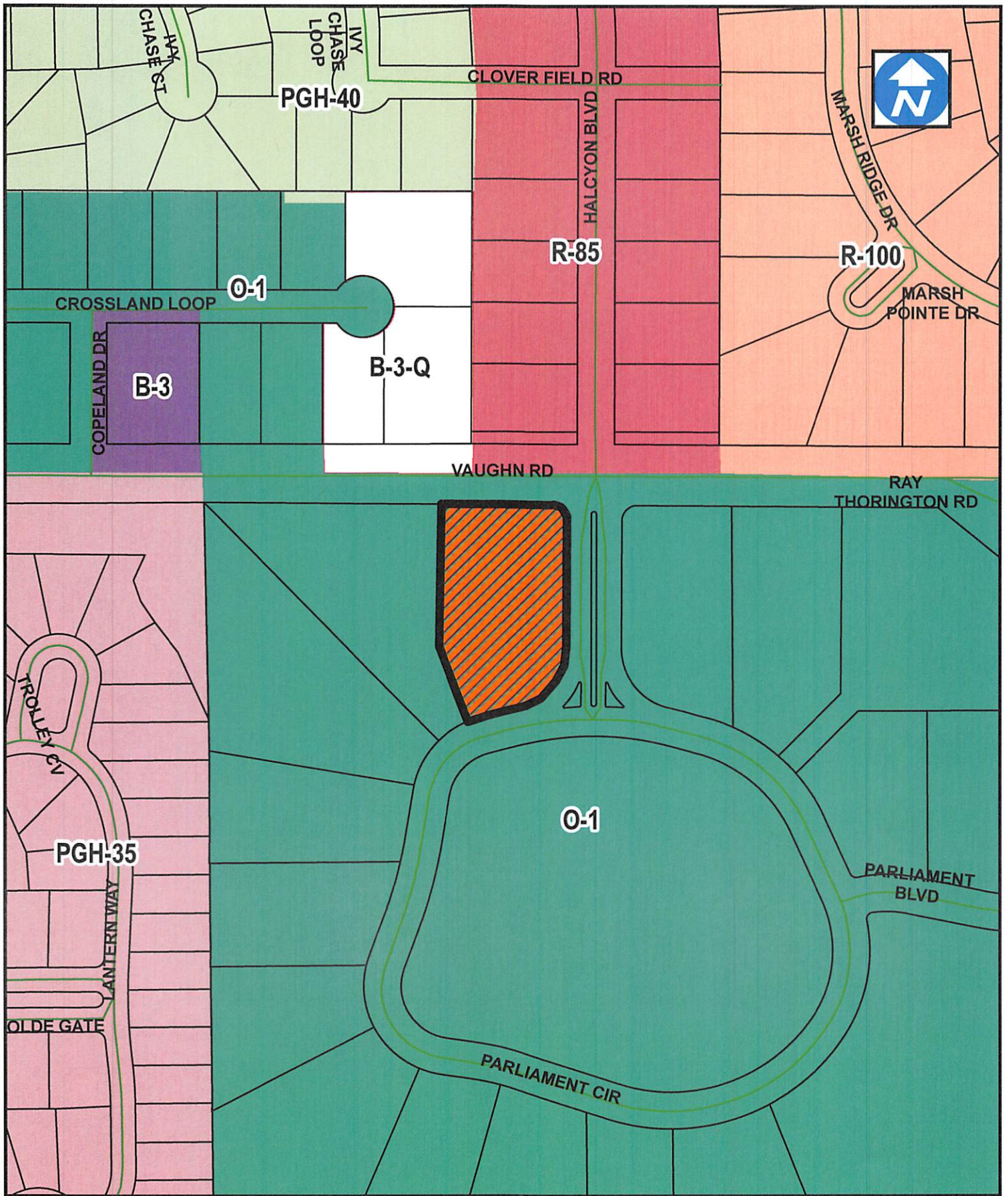
Project Name: Main Street Urgent Care

Zoning: O-1 (Office)

Description: Review of a 3,561 sq. ft. structure to be used as a urgent care medical office. There are 22 paved parking spaces which includes two (2) ADA spaces. There is one (1) access drive to Parliament Circle that leads to Vaughn Road. There is a proposed monument sign per plan that does not comply with zoning regulations. A revised site plan has been requested. All other applicable requirements will be met.

Staff Comment(s): n/a

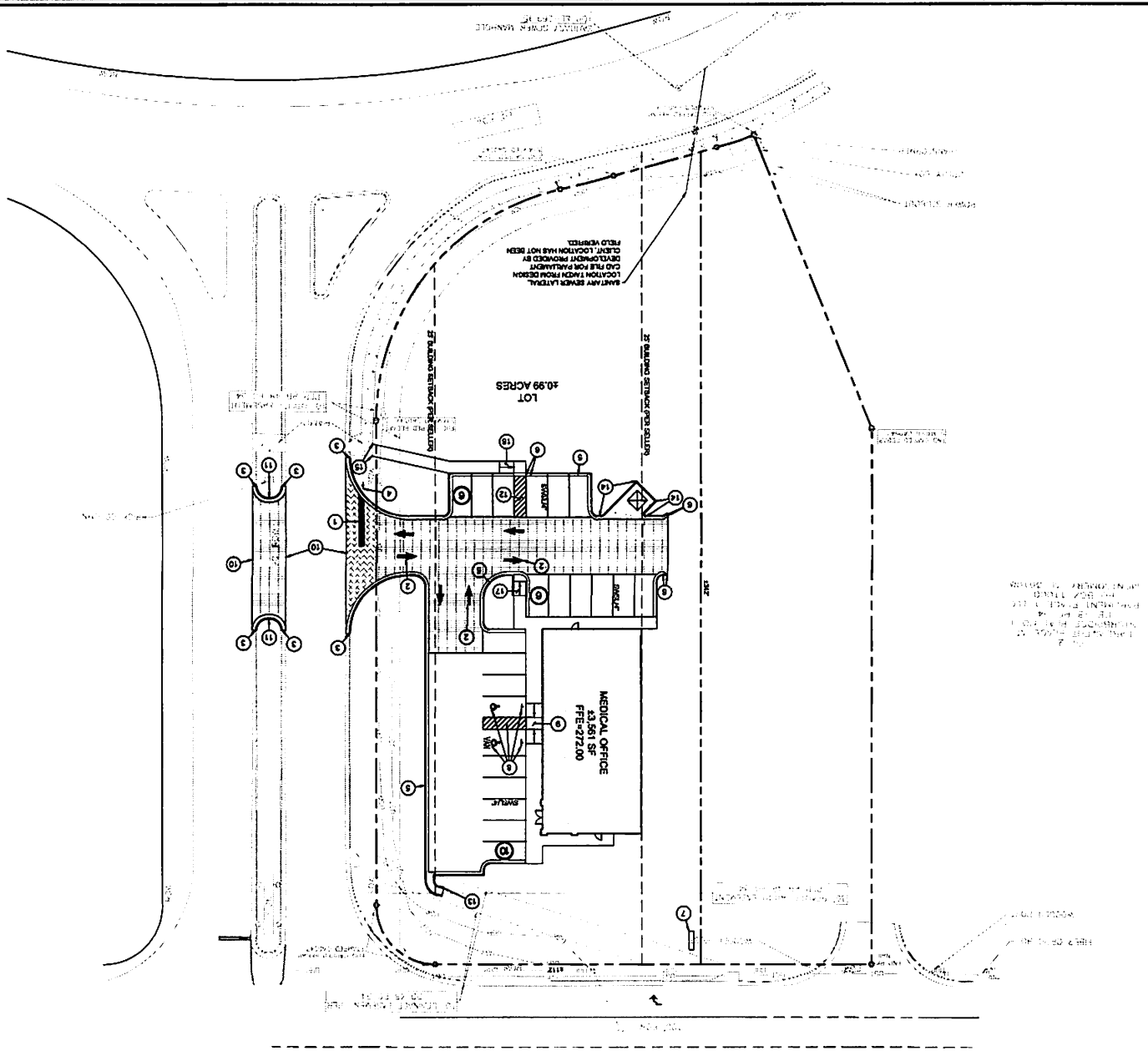
City Council District: 8



Site 

1 inch = 200 feet

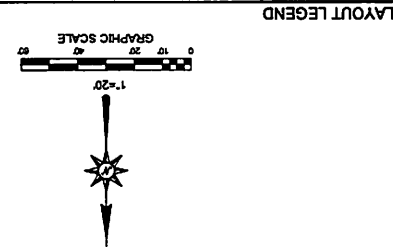
Item _____



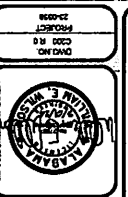
PROPERTY AREA	188 AC ± 11.48 ACRES
LOT AREA	4.18 AC ± 1.68 ACRES
LOCAL JURISDICTION	MONTGOMERY, ALABAMA
ZONING	O-1 OFFICE DISTRICT
RELATING TO	MADE ALLOWED
PROPOSED	1 STORIES
EXISTING	1 STORIES
RECORDS	1 SPACES PER 200 S.F. G.F.A.
PROVIDED	20
STANDARD	22
LOCAL ACCESSIBLE	22
TOTAL	20
BUILDING NETWORK	20
FROM	20
TO	20
REAR	20
FROM	2
ADJACENT TO PUBLIC ROW	2
PROPOSED LANDSCAPE NETWORK	2

- STRIPIING LEGEND**
- DRY 1/4" MORTAR CONCRETE PAVING RECD. TYPICAL. SEE 8 W/25A.
 - HEAVY DUTY ASPHALT PAVEMENT RECD. TYPICAL. SEE 13C/25A.
 - STANDARD DUTY ASPHALT PAVEMENT RECD. TYPICAL. SEE 13C/25A.
 - CONCRETE SIDEWALK RECD. TYPICAL. SEE 11C/25A.

- PAVING LEGEND**
- ① TYPE B ACCESSIBLE RAMP RECD. SEE 02C/25I.
 - ② TYPE B ACCESSIBLE RAMP RECD. SEE 01C/25I.
 - ③ THE TO EXISTING CONCRETE SIDEWALK RECD.
 - ④ NEW CONCRETE SIDEWALK RECD.
 - ⑤ 4" W/25A.
 - ⑥ 8" W/25A.
 - ⑦ W/25A.
 - ⑧ TO EXISTING PAVEMENT RECD.
 - ⑨ NEW CONCRETE SIDEWALK RECD.
 - ⑩ TYPE B ACCESSIBLE RAMP RECD. SEE 02C/25A.
 - ⑪ TYPE B ACCESSIBLE RAMP RECD. SEE 01C/25A.
 - ⑫ ACCESSIBLE RAMP RECD. SEE 02C/25A.
 - ⑬ SITE MONUMENT FROM RECD. SEE ARCHITECTURAL PLANS FOR MORE INFORMATION.
 - ⑭ TRANSITION CURB FROM 8" TO 4" HIGH OVER 2' RECD.
 - ⑮ 4" CURB AND OUTER RECD. TYPICAL. SEE 19C/25A.
 - ⑯ STOP SIGN RECD. SEE 05 01C/25A.
 - ⑰ THE EXISTING CURB AND OUTER RECD.
 - ⑱ PAINTED DIRECTIONAL ARROWS RECD. TYPICAL. SEE 09/25A.
 - ⑲ 8" BOLD WHITE STRIPING RECD. SEE 08C/25A.



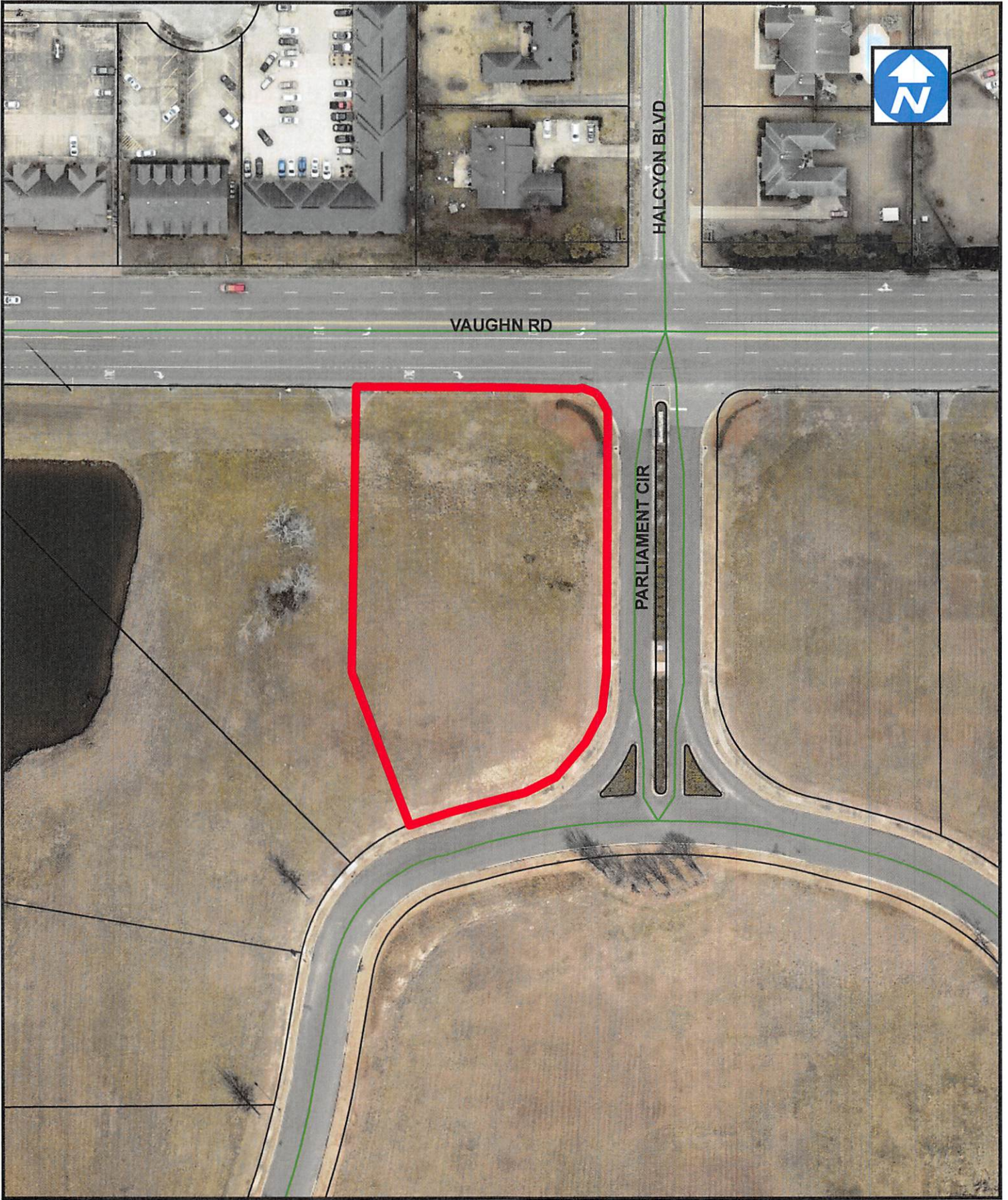
REFER TO SHEET FOR BEST MATCH FOR THE WORK SHOWN ON THIS PLAN. REFER TO SHEET FOR BEST MATCH FOR THE WORK SHOWN ON THIS PLAN.



GONZALEZ STRENGTH & ASSOCIATES, INC.
 CIVIL ENGINEERING
 LAND PLANNING & LANDSCAPE ARCHITECTURE
 1500 WOODSON AVENUE, SUITE 200
 PRATER, ALABAMA 36067
 PHONE: 205.336.4400
 FAX: 205.336.4401
 www.gsa-inc.com

MAIN STREET URGENT CARE
 MAIN STREET URGENT CARE
 MAXUS CONSTRUCTION

NO.	REVISION	DATE
1		
2		
3		
4		
5		



Site 

1 inch = 100 feet

Item _____