

4143 Atlanta Highway

Applicant: SHJ Development LLC

Contact Info: Martie Murphy martie@shjconstructiongroup.com (706)647-0414

Case Number: DP-1984-011

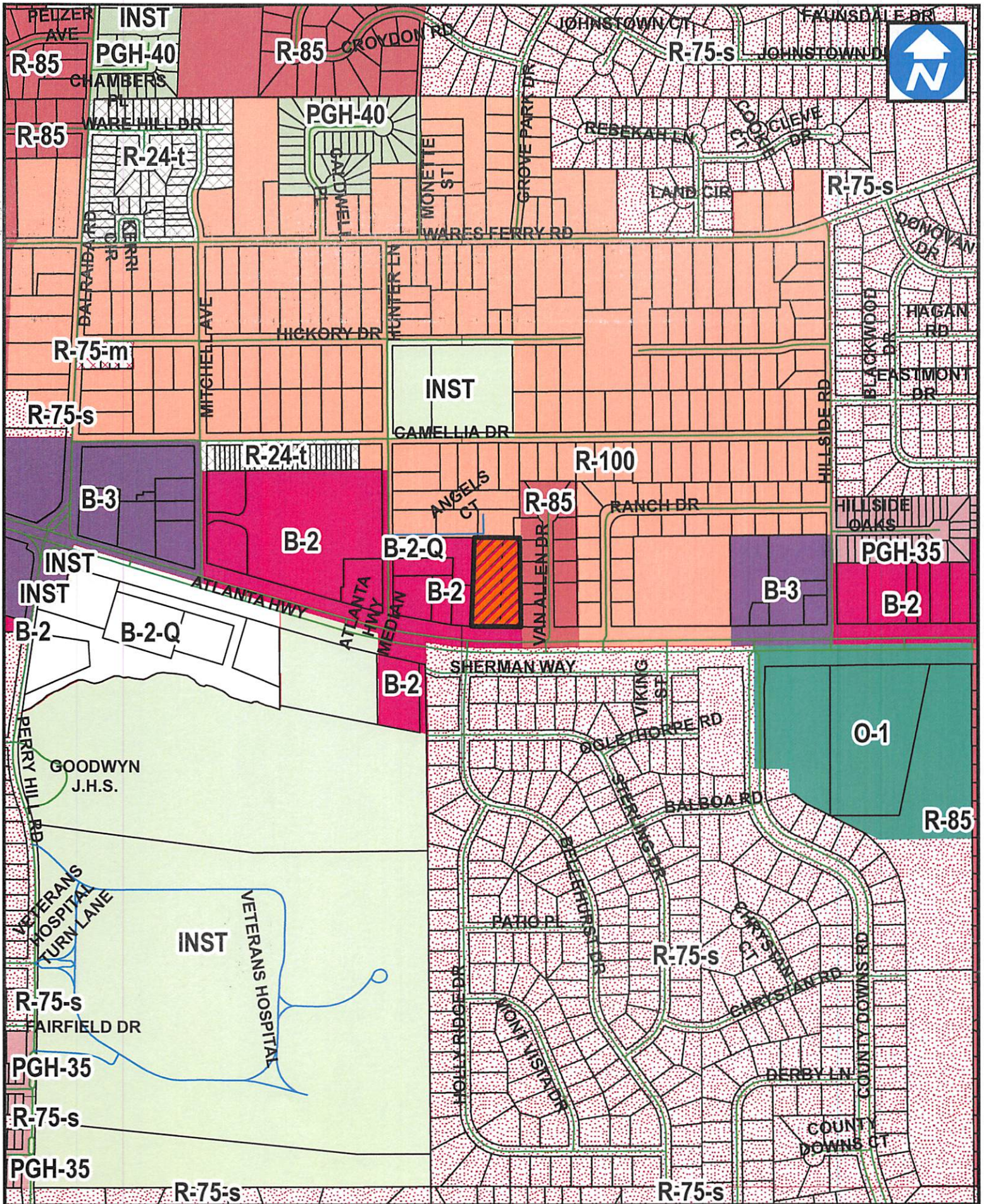
Project Name: Tidal Wave Auto Spa

Zoning: B-2 (Commercial)

Description: Review of a 2,645 sq. ft. building for a car wash. There is 4,502 sq. ft. of canopies for 24 vacuum spaces. There are two (2) regular paved parking spaces, which includes one (1) ADA space. There is one (1) access drive from a private access easement that goes to an existing traffic signal on Atlanta Highway. All applicable requirements will be met.

Staff Comment(s): n/a

City Council District: 1

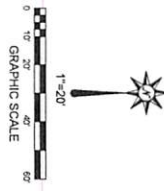
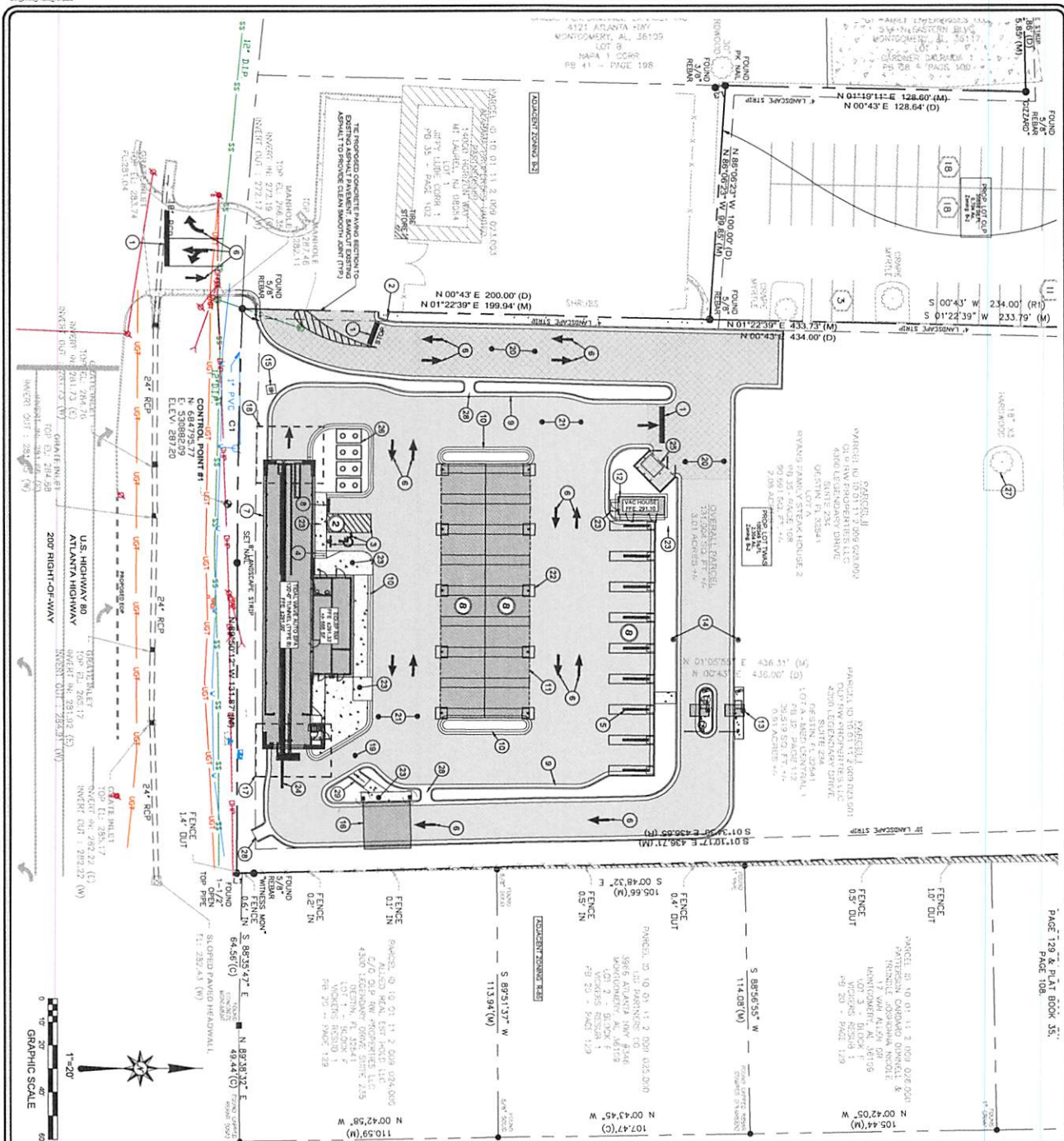


MAP FOR REFERENCE ONLY.
 NOT A LEGAL DOCUMENT.
 MEASUREMENTS ARE APPROXIMATE,
 NOT SURVEY GRADE

SITE 

1 inch = 596 feet

Item _____



LAYOUT LEGEND

- 1 2" ROAD WHITE STOP BAR (R1) SEE DETAIL (T)2521
- 2 1/4" STOP SIGN (R1) SEE DETAIL (T)2521
- 3 1/4" SIGN SHIELD, NOISE SIGN (R1) SEE DETAIL (T)2521
- 4 TYPE 'W' ACCESSIBLE ADA RAMP (R1) CONTRAST AT 12" MAXIMUM SLOPE, SEE DETAIL (T)2521
- 5 BROW INCLUDES SEE ARCH PLAN (R1)
- 6 DIRECTIONAL ARROWS (R1) SEE DETAIL (T)2521
- 7 ROOF OVERHANG FOR BALCONY (R1) SEE ARCH PLAN
- 8 SHADING BLOCK (R1) SEE DETAIL (T)2521
- 9 2" FIBERGLASS CURB AND OUTLET (R1) SEE DETAIL (T)2521
- 10 2" FIBERGLASS CURB AND OUTLET (R1) SEE DETAIL (T)2521
- 11 VERTICAL CURB (R1) SEE DETAIL (T)2521
- 12 TYPE B WOODLUM WOOD BALCONY (R1) SEE ARCHITECTURAL PLAN FOR DETAILS
- 13 TYPE B WOODLUM WOOD BALCONY (R1) SEE ARCHITECTURAL PLAN FOR DETAILS
- 14 TYPE B WOODLUM WOOD BALCONY (R1) SEE ARCHITECTURAL PLAN FOR DETAILS
- 15 TYPE B WOODLUM WOOD BALCONY (R1) SEE ARCHITECTURAL PLAN FOR DETAILS
- 16 TYPE B WOODLUM WOOD BALCONY (R1) SEE ARCHITECTURAL PLAN FOR DETAILS
- 17 TYPE B WOODLUM WOOD BALCONY (R1) SEE ARCHITECTURAL PLAN FOR DETAILS
- 18 TYPE B WOODLUM WOOD BALCONY (R1) SEE ARCHITECTURAL PLAN FOR DETAILS
- 19 TYPE B WOODLUM WOOD BALCONY (R1) SEE ARCHITECTURAL PLAN FOR DETAILS
- 20 TYPE B WOODLUM WOOD BALCONY (R1) SEE ARCHITECTURAL PLAN FOR DETAILS
- 21 TYPE B WOODLUM WOOD BALCONY (R1) SEE ARCHITECTURAL PLAN FOR DETAILS
- 22 TYPE B WOODLUM WOOD BALCONY (R1) SEE ARCHITECTURAL PLAN FOR DETAILS
- 23 TYPE B WOODLUM WOOD BALCONY (R1) SEE ARCHITECTURAL PLAN FOR DETAILS
- 24 TYPE B WOODLUM WOOD BALCONY (R1) SEE ARCHITECTURAL PLAN FOR DETAILS
- 25 TYPE B WOODLUM WOOD BALCONY (R1) SEE ARCHITECTURAL PLAN FOR DETAILS
- 26 TYPE B WOODLUM WOOD BALCONY (R1) SEE ARCHITECTURAL PLAN FOR DETAILS
- 27 TYPE B WOODLUM WOOD BALCONY (R1) SEE ARCHITECTURAL PLAN FOR DETAILS
- 28 TYPE B WOODLUM WOOD BALCONY (R1) SEE ARCHITECTURAL PLAN FOR DETAILS
- 29 TYPE B WOODLUM WOOD BALCONY (R1) SEE ARCHITECTURAL PLAN FOR DETAILS

PAVING LEGEND

- 1 CONCRETE FLOORING (R1) SEE DETAIL (T)2521
- 2 CONCRETE FLOORING (R1) SEE DETAIL (T)2521
- 3 CONCRETE FLOORING (R1) SEE DETAIL (T)2521
- 4 CONCRETE FLOORING (R1) SEE DETAIL (T)2521
- 5 CONCRETE FLOORING (R1) SEE DETAIL (T)2521
- 6 CONCRETE FLOORING (R1) SEE DETAIL (T)2521
- 7 CONCRETE FLOORING (R1) SEE DETAIL (T)2521
- 8 CONCRETE FLOORING (R1) SEE DETAIL (T)2521
- 9 CONCRETE FLOORING (R1) SEE DETAIL (T)2521
- 10 CONCRETE FLOORING (R1) SEE DETAIL (T)2521
- 11 CONCRETE FLOORING (R1) SEE DETAIL (T)2521
- 12 CONCRETE FLOORING (R1) SEE DETAIL (T)2521
- 13 CONCRETE FLOORING (R1) SEE DETAIL (T)2521
- 14 CONCRETE FLOORING (R1) SEE DETAIL (T)2521
- 15 CONCRETE FLOORING (R1) SEE DETAIL (T)2521
- 16 CONCRETE FLOORING (R1) SEE DETAIL (T)2521
- 17 CONCRETE FLOORING (R1) SEE DETAIL (T)2521
- 18 CONCRETE FLOORING (R1) SEE DETAIL (T)2521
- 19 CONCRETE FLOORING (R1) SEE DETAIL (T)2521
- 20 CONCRETE FLOORING (R1) SEE DETAIL (T)2521
- 21 CONCRETE FLOORING (R1) SEE DETAIL (T)2521
- 22 CONCRETE FLOORING (R1) SEE DETAIL (T)2521
- 23 CONCRETE FLOORING (R1) SEE DETAIL (T)2521
- 24 CONCRETE FLOORING (R1) SEE DETAIL (T)2521
- 25 CONCRETE FLOORING (R1) SEE DETAIL (T)2521
- 26 CONCRETE FLOORING (R1) SEE DETAIL (T)2521
- 27 CONCRETE FLOORING (R1) SEE DETAIL (T)2521
- 28 CONCRETE FLOORING (R1) SEE DETAIL (T)2521
- 29 CONCRETE FLOORING (R1) SEE DETAIL (T)2521

SITE DATA TABLE

NO.	DESCRIPTION	QUANTITY	REMARKS
1	PROPOSED TRUCK LOT AREA, APPROX 100 SQ FT	1	SEE DETAIL (T)2521
2	LOCAL JURISDICTION	1	MONTCOMERY, AL
3	ZONING	1	RS-2
4	BUILDING HEIGHT	1	1 STORY
5	REQUIREMENTS	1	SEE DETAIL (T)2521
6	REQUIREMENTS	1	SEE DETAIL (T)2521
7	REQUIREMENTS	1	SEE DETAIL (T)2521
8	REQUIREMENTS	1	SEE DETAIL (T)2521
9	REQUIREMENTS	1	SEE DETAIL (T)2521
10	REQUIREMENTS	1	SEE DETAIL (T)2521
11	REQUIREMENTS	1	SEE DETAIL (T)2521
12	REQUIREMENTS	1	SEE DETAIL (T)2521
13	REQUIREMENTS	1	SEE DETAIL (T)2521
14	REQUIREMENTS	1	SEE DETAIL (T)2521
15	REQUIREMENTS	1	SEE DETAIL (T)2521
16	REQUIREMENTS	1	SEE DETAIL (T)2521
17	REQUIREMENTS	1	SEE DETAIL (T)2521
18	REQUIREMENTS	1	SEE DETAIL (T)2521
19	REQUIREMENTS	1	SEE DETAIL (T)2521
20	REQUIREMENTS	1	SEE DETAIL (T)2521
21	REQUIREMENTS	1	SEE DETAIL (T)2521
22	REQUIREMENTS	1	SEE DETAIL (T)2521
23	REQUIREMENTS	1	SEE DETAIL (T)2521
24	REQUIREMENTS	1	SEE DETAIL (T)2521
25	REQUIREMENTS	1	SEE DETAIL (T)2521
26	REQUIREMENTS	1	SEE DETAIL (T)2521
27	REQUIREMENTS	1	SEE DETAIL (T)2521
28	REQUIREMENTS	1	SEE DETAIL (T)2521
29	REQUIREMENTS	1	SEE DETAIL (T)2521

REFER TO SURVEY FOR
REVISIONS TO THIS PLAN
TO THE WORK SHOWN ON THIS
PLAN

GONZALEZ - STRENGTH & ASSOCIATES, INC.
 CIVIL ENGINEERING - TRANSPORTATION ENGINEERING - LAND SURVEYING
 LAND PLANNING - LANDSCAPE ARCHITECTURE
 150 WOODS OF RIVERCHASE DRIVE SUITE 200
 HOOPER, ALABAMA 36344
 PHONE: (205) 942-3033
 FAX: (205) 942-3033
 www.Gonzalez-Strength.com

SITE LAYOUT PLAN
TIDAL WAVE AUTO SPA
 4135 AND 4143 ATLANTA HIGHWAY
 MONTCOMERY, AL 36106
SHJ DEVELOPMENT LLC
 THOMASTON, GA

NO.	REVISIONS	DATE
1		
2		
3		
4		

DATE: 01/20/23
 PROJECT: 23-048
 DRAWING: 23-048



**MAP FOR REFERENCE ONLY.
NOT A LEGAL DOCUMENT.
MEASUREMENTS ARE APPROXIMATE,
NOT SURVEY GRADE**

SITE 

1 inch = 200 feet

Item _____