

1323 Eastern Boulevard

Applicant: Gonzalez- Strength & Associates

Contact Info: Trent Hagin thagin@gonzalez-strength.com 205-942-7486

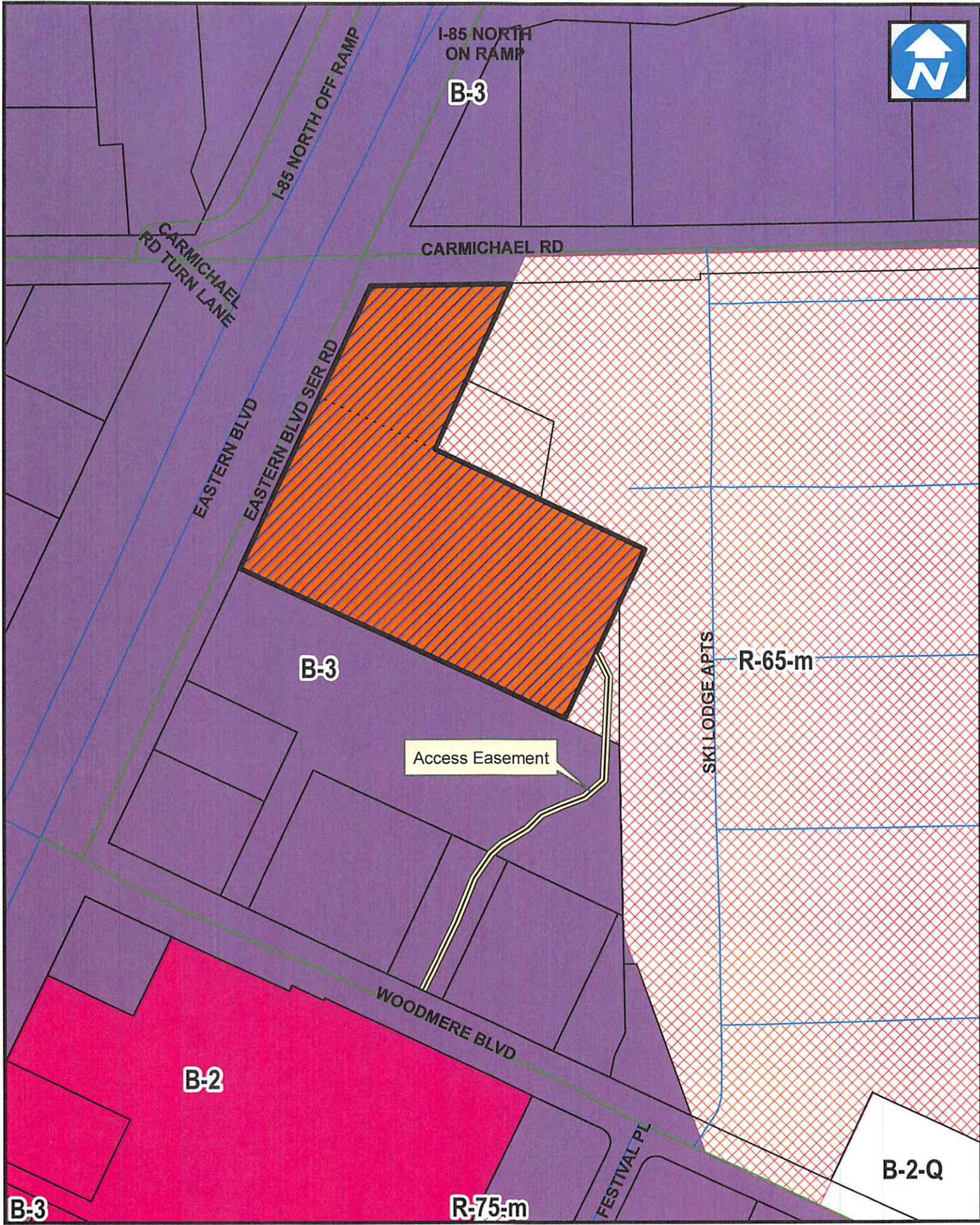
Case Number: DP-1981-078

Project Name: RaceTrac Travel Center

Zoning: B-3 (Commercial)

Description: Review of an 8,100 sq. ft. commercial building and 12,122 sq. ft. of canopy for the purpose of a gas station/travel center. There are 18-wheeler fueling stations; however, this is not a truck stop and there will not be 18-wheeler parking on-site, nor shower facilities. There are 61 paved parking spaces indicated on the site plan. There is one (1) access drive to Eastern Boulevard Service Road, one (1) access drive to Carmichael Road, and one (1) access drive Woodmere Boulevard. All applicable codes will be met.

City Council District: 9

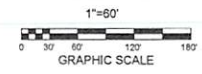
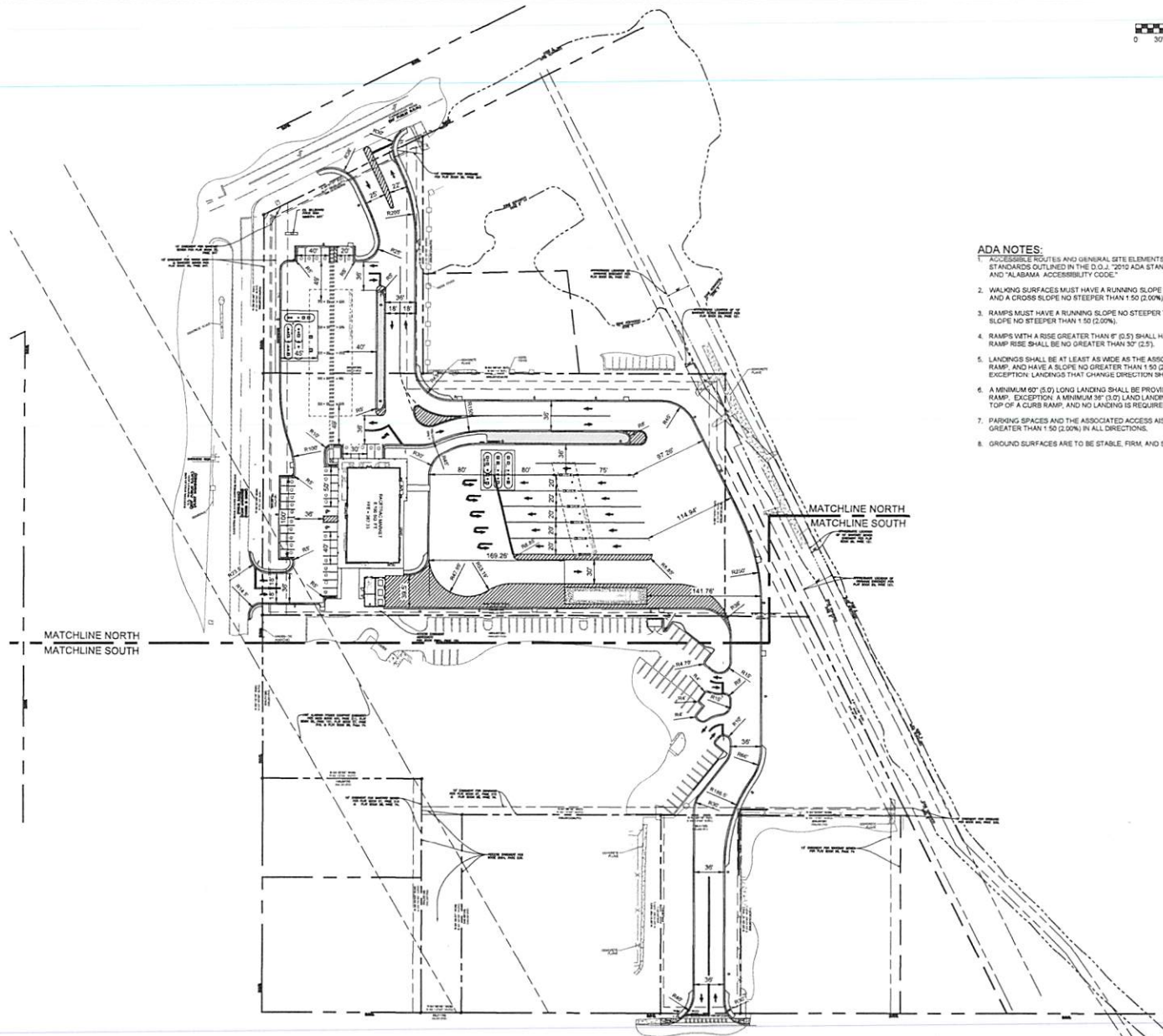


SITE 

1 inch = 200 feet

Item _____

N:\2022\Projects\RaceTrac\RaceTrac Inc\22-0344_Plan\Drawings\AL\Engineering\Construction Documents\22-0344 - C.dwg Oct 18, 2023 - 4:23pm



- ADA NOTES:**
1. ACCESSIBLE ROUTES AND GENERAL SITE ELEMENTS SHALL COMPLY WITH THE STANDARDS OUTLINED IN THE D.O.J. "2010 ADA STANDARDS FOR ACCESSIBLE DESIGN" AND "ALABAMA ACCESSIBILITY CODE."
 2. WALKING SURFACES MUST HAVE A RUNNING SLOPE NO STEEPER THAN 1:30 (3.00%), AND A CROSS SLOPE NO STEEPER THAN 1:50 (2.00%).
 3. RAMPS MUST HAVE A RUNNING SLOPE NO STEEPER THAN 1:12 (8.33%), AND A CROSS SLOPE NO STEEPER THAN 1:50 (2.00%).
 4. RAMPS WITH A RISE GREATER THAN 6" (0.5') SHALL HAVE HANDRAILS. THE MAXIMUM RAMP RISE SHALL BE NO GREATER THAN 30" (2.5').
 5. LANDINGS SHALL BE AT LEAST AS WIDE AS THE ASSOCIATED RAMP AND/OR CURB RAMP, AND HAVE A SLOPE NO GREATER THAN 1:50 (2.00%) IN ALL DIRECTIONS. EXCEPTION: LANDINGS THAT CHANGE DIRECTION SHALL BE AT LEAST 60" (5.0') WIDE.
 6. A MINIMUM 60" (5.0') LONG LANDING SHALL BE PROVIDED AT THE TOP AND BOTTOM OF A RAMP. EXCEPTION: A MINIMUM 36" (3.0') LAND LANDING SHALL BE PROVIDED AT THE TOP OF A CURB RAMP, AND NO LANDING IS REQUIRED AT THE BOTTOM.
 7. PARKING SPACES AND THE ASSOCIATED ACCESS AISLE(S) SHALL HAVE A SLOPE NO GREATER THAN 1:50 (2.00%) IN ALL DIRECTIONS.
 8. GROUND SURFACES ARE TO BE STABLE, FIRM, AND SLIP RESISTANT.

SITE DESIGN STANDARDS			
BUILDING SETBACK	REQUIRED	PROVIDED	
FRONT (WEST)	30'	0'	-
SIDE STREET (NORTH)	5'	0'	-
SIDE INTERIOR (SOUTH)	5'	0'	-
REAR (EAST)	20'	0'	-
DRIVE SETBACK	REQUIRED	PROVIDED	
FRONT (WEST)	10'	0'	-
SIDE STREET (NORTH)	10'	0'	-

(0) = SUBJECT TO DEVIATION REQUEST;
(N) = SUBJECT TO VARIANCE REQUEST.

PARKING SUMMARY		
CATEGORY	REQUIRED	COUNT
STANDARD PARKING SPACES		34
HANDICAP ACCESSIBLE SPACES		2
TOTAL		36

LAND USE SUMMARY (ON SITE)		
CATEGORY	AREA	PERCENTAGE
BUILDING	6.14 AC.	27.7%
PAVEMENT / SIDEWALK	4.59 AC.	19.4%
PERVIOUS	2.83 AC.	29.8%
TOTAL	6.86 AC.	100%

LANDSCAPE BUFFER REQUIREMENTS		
PROPERTY LINE	WIDTH	
FRONT (WEST)	0'	
SIDE STREET (NORTH)	5'	
SIDE INTERIOR (SOUTH)	4'	
REAR (EAST)	12'	



Know what's below
Call before you dig

REFER TO SURVEY FOR EXISTING CONDITIONS LEGEND

REFER TO SHEET 08 FOR ADDITIONAL NOTES APPLICABLE TO THE WORK SHOWN ON THIS PLAN

DATE	09/15/2023
SCALE	SEE PLAN
DRAWN BY	T.HAGIN
DRAWING NAME	22-0344 - C.dwg
SHEET NO.	0
REVISION	

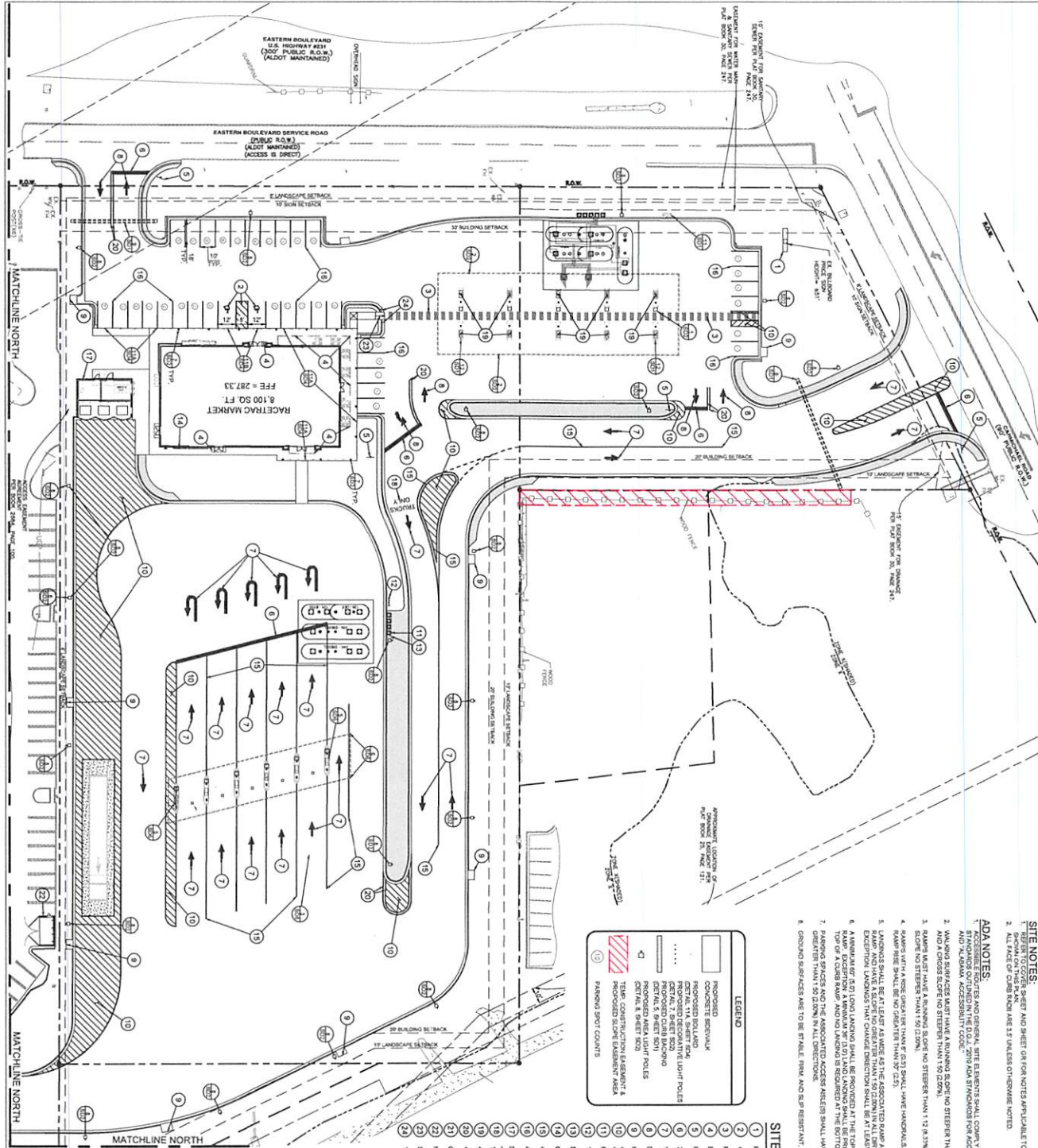
GONZALEZ & STRENGTH & ASSOCIATES, INC.
 ENGINEERING, ARCHITECTURE, INTERIOR DESIGN, LAND PLANNING
 1000 UNIVERSITY BLVD., SUITE 1000
 MONTGOMERY, AL 36102
 (205) 263-1100
 www.gonzalezstrength.com



PLEASE PLACE THIS SHEET TO FEDERAL COPYRIGHT LAWS. ANY USE OF SAME WITHOUT THE EXPRESSED WRITING OF GONZALEZ & STRENGTH & ASSOCIATES, INC. IS PROHIBITED.

RaceTrac
 RACETRAC, INC.
 200 GALLERIA PARKWAY SE
 SUITE 1000
 MONTGOMERY, AL 36102
 (205) 437-7000

SITE LAYOUT PLAN - OVERALL
 RACETRAC STORE NO. XXXX
 1333 EASTERN BLVD
 MONTGOMERY, AL
 MONTGOMERY COUNTY



SITE NOTES:

1. REFER TO DRAWING SHEET NO SHEET OR FOR NOTES APPLICABLE TO THE WORK.
2. ALL WORK SHALL BE DONE IN ACCORDANCE WITH THE CITY OF HUNTSVILLE ZONING AND SUBDIVISION ORDINANCES.
3. THE LOCATION OF CURBS SHALL BE 15' WIDERS OVERWHEELED.

ADA NOTES:

1. ACCESSIBLE ROUTES AND GENERAL SITE ELEMENTS SHALL COMPLY WITH THE 2010 AMERICAN WITH DISABILITIES ACT (ADA) AND ALL APPLICABLE FEDERAL, STATE AND ALABAMA ACCESSIBILITY CODES.
2. WALKING SURFACES MUST HAVE A MINIMUM SLOPE NO STEEPER THAN 1:20 (5%) AND A CROSS SLOPE NO STEEPER THAN 1:50 (2%).
3. RAMPING MUST HAVE A MINIMUM SLOPE NO STEEPER THAN 1:12 (8.3%) AND A CROSS SLOPE NO STEEPER THAN 1:50 (2%).
4. RAMPING SHALL BE CONCRETE OR ASPHALT AND SHALL HAVE HANDRAILS. THE MAXIMUM RAMPING SHALL BE 30' LONG.
5. LANDINGS SHALL BE AT LEAST AS WIDE AS THE ASSOCIATED RAMP AND CROSS SLOPE NO STEEPER THAN 1:50 (2%).
6. AN AMENITY OR TOILET BUILDING SHALL BE PROVIDED AT THE TOP AND BOTTOM OF A CURB RAMP. AND NO LANDING IS REQUIRED AT THE BOTTOM.
7. PARKING SPACES AND THE ASSOCIATED ACCESSIBLE SPACES SHALL HAVE A CROSS SLOPE NO STEEPER THAN 1:50 (2%) IN ALL DIRECTIONS.
8. GROUND SURFACES ARE TO BE STABLE, FIRM AND SLIP RESISTANT.



SITE LAYOUT LEGEND

- 1 PROJECTIONS, FIRE PROTECTION BY OTHER
- 2 ACCESSIBLE SPACE, WALK SURFACE, SEE DETAIL: 13200A.1
- 3 PEDIESTRAL CROSSWALK, SEE DETAIL: 13200A.1
- 4 BUILDING OVERLAP, TYP. SEE ARCHITECTURAL PLANS FOR DETAILS.
- 5 R-1 STOP SIGN, SEE DETAIL: 13200A.1, 13200A.2, 13200A.3
- 6 R-1 STOP SIGN, SEE DETAIL: 13200A.1, 13200A.2, 13200A.3
- 7 TRUCKING CURB, DIR. SEE DETAIL: 13200A.1, 13200A.2, 13200A.3
- 8 TRUCKING CURB, DIR. SEE DETAIL: 13200A.1, 13200A.2, 13200A.3
- 9 DIR. ARROW, SEE DETAIL: 13200A.1
- 10 R-1 PLATE, SEE DETAIL: 13200A.1, 13200A.2, 13200A.3
- 11 R-1 PLATE, SEE DETAIL: 13200A.1, 13200A.2, 13200A.3
- 12 TRUCKING CURB, DIR. SEE DETAIL: 13200A.1, 13200A.2, 13200A.3
- 13 TRUCKING CURB, DIR. SEE DETAIL: 13200A.1, 13200A.2, 13200A.3
- 14 R-1 PLATE, SEE DETAIL: 13200A.1, 13200A.2, 13200A.3
- 15 R-1 PLATE, SEE DETAIL: 13200A.1, 13200A.2, 13200A.3
- 16 R-1 PLATE, SEE DETAIL: 13200A.1, 13200A.2, 13200A.3
- 17 R-1 PLATE, SEE DETAIL: 13200A.1, 13200A.2, 13200A.3
- 18 R-1 PLATE, SEE DETAIL: 13200A.1, 13200A.2, 13200A.3
- 19 R-1 PLATE, SEE DETAIL: 13200A.1, 13200A.2, 13200A.3
- 20 R-1 PLATE, SEE DETAIL: 13200A.1, 13200A.2, 13200A.3
- 21 R-1 PLATE, SEE DETAIL: 13200A.1, 13200A.2, 13200A.3
- 22 R-1 PLATE, SEE DETAIL: 13200A.1, 13200A.2, 13200A.3

RACETRAC STANDARD LEGEND

- 1 MAIN SERVICE, SEE DETAIL: 115001
- 2 VAND W/P/PAINT, SEE DETAIL: 125001
- 3 CONCRETE ISLAND, TYPICAL, SEE DETAIL: 135001
- 4 CANYON ACCESSORIES LAYOUT, SEE DETAIL: 105001
- 5 DEPOSITING LIGHT, TYPICAL, SEE DETAIL: 105002
- 6 R-1 PLATE, SEE DETAIL: 13200A.1
- 7 R-1 PLATE, SEE DETAIL: 13200A.2
- 8 R-1 PLATE, SEE DETAIL: 13200A.3
- 9 VAND/P/PAINT, TYPICAL, SEE DETAIL: 115004
- 10 CONC/CHALK, TYPICAL, SEE DETAIL: 115003
- 11 CONC/CHALK, TYPICAL, SEE DETAIL: 115004
- 12 CONC/CHALK, TYPICAL, SEE DETAIL: 115005
- 13 CONC/CHALK, TYPICAL, SEE DETAIL: 115006
- 14 CONC/CHALK, TYPICAL, SEE DETAIL: 115007
- 15 CONC/CHALK, TYPICAL, SEE DETAIL: 115008
- 16 CONC/CHALK, TYPICAL, SEE DETAIL: 115009
- 17 CONC/CHALK, TYPICAL, SEE DETAIL: 115010
- 18 CONC/CHALK, TYPICAL, SEE DETAIL: 115011
- 19 CONC/CHALK, TYPICAL, SEE DETAIL: 115012
- 20 CONC/CHALK, TYPICAL, SEE DETAIL: 115013
- 21 CONC/CHALK, TYPICAL, SEE DETAIL: 115014
- 22 CONC/CHALK, TYPICAL, SEE DETAIL: 115015

Know what's below
 Call before you dig

811
 Know what's below
 Call before you dig

REFER TO SHEET FOR
 ADDITIONAL NOTES, PERMISSIBLE
 PLAN, AND ROCK SHOW ON THIS
 SHEET.

SITE LAYOUT PLAN - NORTH	
RACETRAC STORE NO. XXXX	
1323 EASTERN BLVD MONTGOMERY, AL MONTGOMERY COUNTY	
DATE:	08.11.2022
DRAWN BY:	T.M.HENZ
CHECKED BY:	T.M.HENZ
SCALE:	AS SHOWN
PROJECT NO.:	0
SHEET NO.:	0

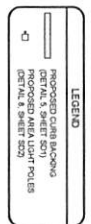
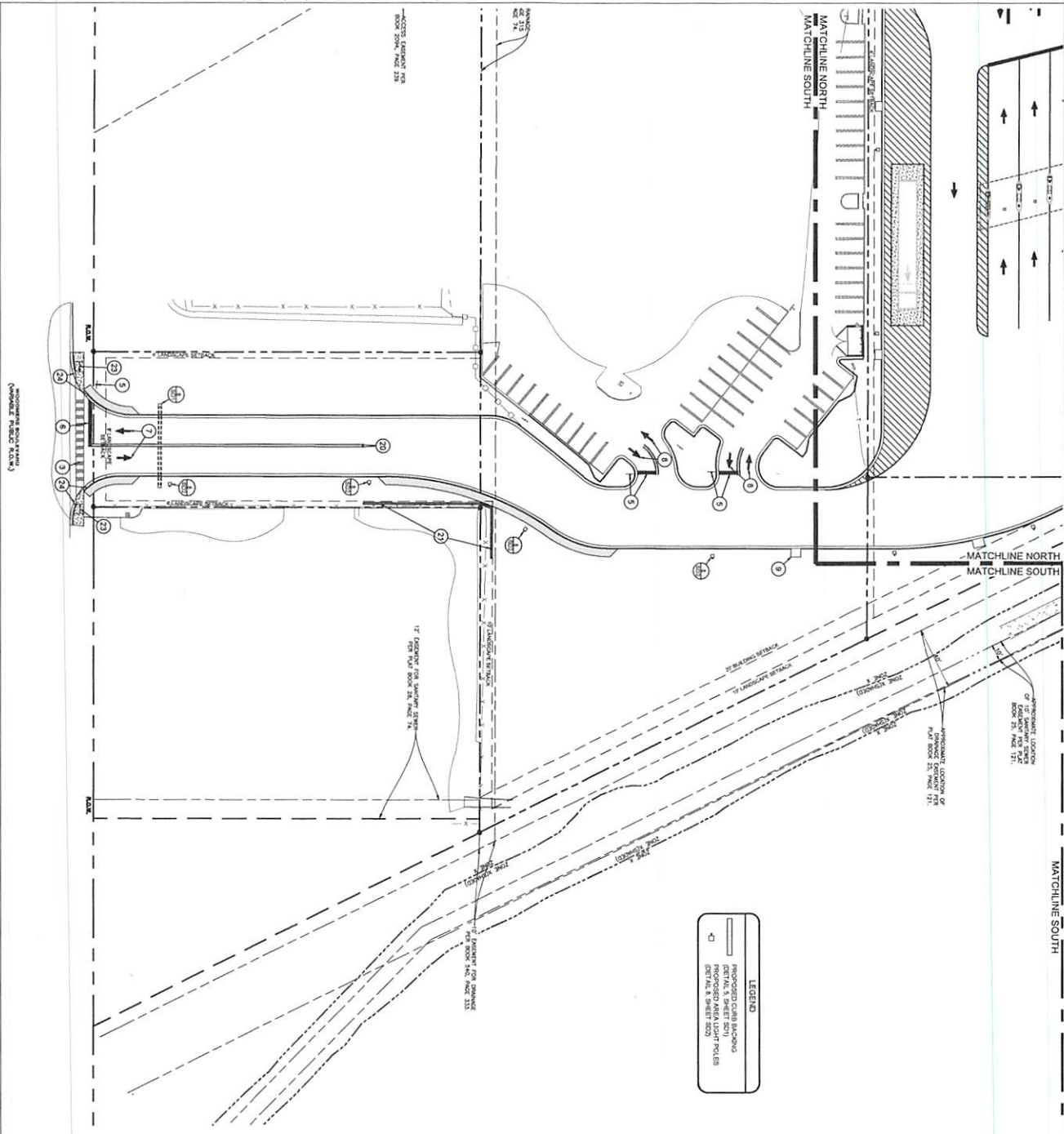
RACETRAC, INC.
 200 GALLERIA PARKWAY SE
 SUITE 500 ATLANTA, GA 30339
 (770) 431-7600

THESE PLANS ARE SUBJECT
 TO FEDERAL COPYRIGHT LAWS
 ANY USE OF SAME WITHOUT
 THE EXPRESS WRITTEN
 PERMISSION OF RACETRAC
 PETROLEUM INC. IS PROHIBITED.



GONZALEZ - STRENGTH & ASSOCIATES, INC.
 CIVIL, ENGINEERING, TRANSPORTATION ENGINEERING, LAND SURVEYING, LAND PLANNING
 1000 WOODBRIDGE PARKWAY
 SUITE 100
 WOODBRIDGE, AL 37185
 (615) 885-1111
 WWW.GONZALEZSTRENGTH.COM

NO.	REVISION	DATE



1"=30'

0 15 30 45 60 75 90
GRAPHIC SCALE



SITE NOTES:

1. REFER TO SHEET NORTH AND SHEET SOUTH FOR NOTES APPLICABLE TO THE WORK SHOWN ON THIS SHEET.
2. ALL FACE OF CURB RAMP ARE 1:5 UNLESS OTHERWISE NOTED.

ADA NOTES:

1. THE DESIGNER AND GENERAL CONTRACTOR SHALL COMPLY WITH THE STANDARDS OUTLINED IN THE 2010 ADA STANDARDS FOR ACCESSIBLE DESIGN AND RELATED REGULATIONS.
2. ALL NEW SURFACES MUST HAVE A FINISH OF NO STEEPER THAN 1:50 (2.0%).
3. RAMP SLOPE SHALL BE A FINISH OF NO STEEPER THAN 1:12 (8.33%).
4. RAMP SLOPE SHALL BE NO GREATER THAN 1:25.
5. LANDINGS SHALL BE AT LEAST AS WIDE AS THE ASSOCIATED RAMP AND CURB EXCEPT FOR A MINIMUM OF 5'0" LONG LANDINGS SHALL BE PROVIDED AT THE TOP AND BOTTOM OF A RAMP OF ANY LENGTH.
6. A MINIMUM OF 5'0" LONG LANDINGS SHALL BE PROVIDED AT THE TOP AND BOTTOM OF A RAMP OF ANY LENGTH.
7. PARKING SPACES AND THE ASSOCIATED ACCESS AISLES SHALL HAVE A SLOPE NO GREATER THAN 1:50 (2.0%) IN ALL DIRECTIONS.
8. CURB AND SURFACES ARE TO BE STABLE, FIRM AND SLIP RESISTANT.

SITE LAYOUT LEGEND

1. DRIVEWAY
2. DRIVEWAY
3. DRIVEWAY
4. DRIVEWAY
5. DRIVEWAY
6. DRIVEWAY
7. DRIVEWAY
8. DRIVEWAY
9. DRIVEWAY
10. DRIVEWAY
11. DRIVEWAY
12. DRIVEWAY
13. DRIVEWAY
14. DRIVEWAY
15. DRIVEWAY
16. DRIVEWAY
17. DRIVEWAY
18. DRIVEWAY
19. DRIVEWAY
20. DRIVEWAY
21. DRIVEWAY
22. DRIVEWAY
23. DRIVEWAY
24. DRIVEWAY

RACETRAC STANDARD LEGEND

1. DRIVEWAY
2. DRIVEWAY
3. DRIVEWAY
4. DRIVEWAY
5. DRIVEWAY
6. DRIVEWAY
7. DRIVEWAY
8. DRIVEWAY
9. DRIVEWAY
10. DRIVEWAY
11. DRIVEWAY
12. DRIVEWAY
13. DRIVEWAY
14. DRIVEWAY
15. DRIVEWAY
16. DRIVEWAY
17. DRIVEWAY
18. DRIVEWAY
19. DRIVEWAY
20. DRIVEWAY
21. DRIVEWAY
22. DRIVEWAY
23. DRIVEWAY
24. DRIVEWAY

Know what's below
Call before you dig

811

DATE	03.13.2023
SCALE	AS SHOWN
DRAWN BY	TKAJEN
CHECKED BY	TKAJEN
PROJECT NO.	22-0344 - C-003
SHEET NO.	0

RACETRAC, INC.
200 CALLERA PARKWAY SE
SUITE 500 ATLANTA, GA 30339
(770) 431-7600

THESE PLANS ARE SUBJECT TO FEDERAL, STATE AND LOCAL ORDINANCES AND ANY USE OF SAME WITHOUT THE EXPRESS WRITTEN PERMISSION OF RACETRAC PETROLEUM INC. IS PROHIBITED.

GONZALEZ - STRENGTH & ASSOCIATES, INC.
THE ENGINEERING, TRANSPORTATION ENGINEERING, LAND SURVEYING, LAND PLANNING
1888 WOODLARK DRIVE, SUITE 100
MONTGOMERY, AL 36104
PHONE: (205) 842-2468
FAX: (205) 842-8838
www.gonzalez-strength.com

PROJECT NO.	22-0344
SHEET NO.	0
DATE	03.13.2023
SCALE	AS SHOWN
DRAWN BY	TKAJEN
CHECKED BY	TKAJEN
PROJECT NO.	22-0344 - C-003
SHEET NO.	0



I-85 NORTH ON RAMP

CARMICHAEL RD TURN LANE

CARMICHAEL RD

EASTERN BLVD

EASTERN BLVD SER RD

Access Easement

WOODMERE BLVD

SKILODGE APTS

FESTIVAL PL

SITE 

1 inch = 200 feet
Item 