

Riverfront Greenway Trail Extension North: From Cypress Inlet to Shady Street Trailhead Park



EXTENDING THE RIVERFRONT TRAIL THROUGH PUBLIC-PRIVATE PARTNERSHIP

The Montgomery Lions Club Children’s Sensory Trail will serve as a gateway to an additional 0.6 miles of Riverfront trail to the north of Downtown. The proposed connection from the new bridge across Cypress Inlet, completed in 2019, along Lafayette Street to a new trailhead and park at Shady St. will create wonderful new opportunities for children of all ages to get outside and enjoy nature in the City. This long-term plan was underscored in Envision Montgomery 2040, the Comprehensive Plan.

This proposed new stretch of bike/pedestrian trail will be accessible both at Lafayette and Railroad streets downtown, and at the northern end at Shady Street by Capitol City Oyster Bar and Montgomery Marina/ RV Resort just off the Northern Blvd.



LIONS CLUB CHILDREN’S SENSORY TRAIL
This special stretch of trail is designed especially for sight-impaired children to provide wonderful tactile and auditory experiences alongside the Alabama River.



PROTECTED BIKE / PEDESTRIAN TRAIL ALONG LAFAYETTE
Most of the trail will be constructed as an 8’ wide multi-modal, bike and pedestrian path to facilitate strolls and races alike.



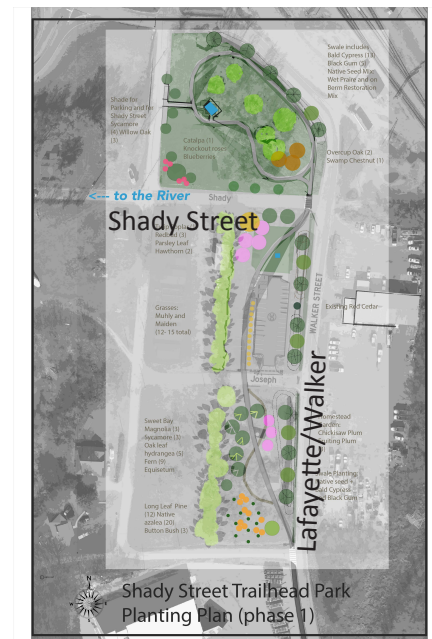
RIVER ECOLOGY
The trail will enhance habitat at the River’s edge. There is opportunity all along the route for community and educational partnerships.



SHADY ST. TRAILHEAD
The Shady St. Trailhead will feature bike parking and a picnic shelter, while the trail makes a continuous loop around the park for smooth travel to and from Downtown.

HELP MAKE THIS RIVERFRONT GREENWAY EXTENSION POSSIBLE!

The new Shady St. Trailhead will feature accessible car and bike parking at the northern end, a trailhead kiosk, picnic shelter and bird and butterfly pollinator plantings. It can grow to include public art and interpretive signs along the bike + pedestrian route. It will be designed to enhance the environment and ecological potential of the land and teach citizens about Montgomery’s unique riparian ecology. The sketch below shows the proposed trailhead parking and walk/bike loop.



This Trailhead and Park is scheduled to start construction on City-owned parcels in 2021.