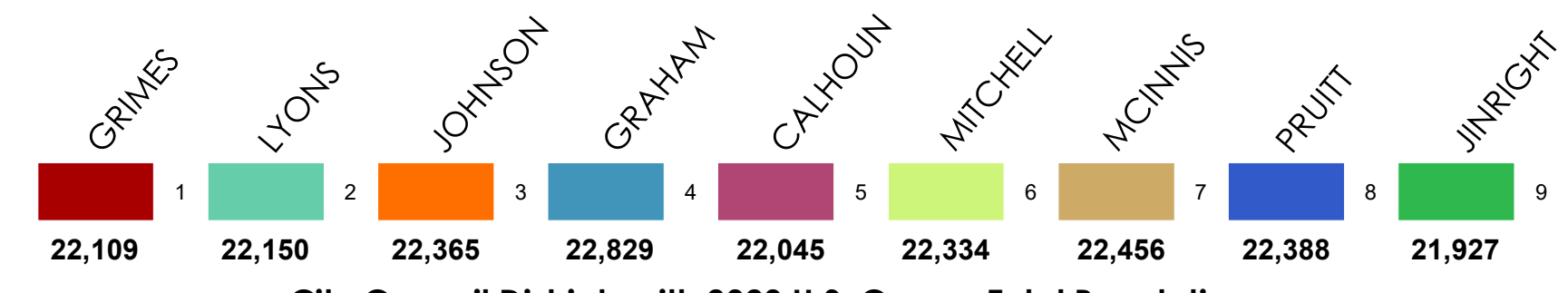




APPROVED CITY COUNCIL DISTRICT - 9

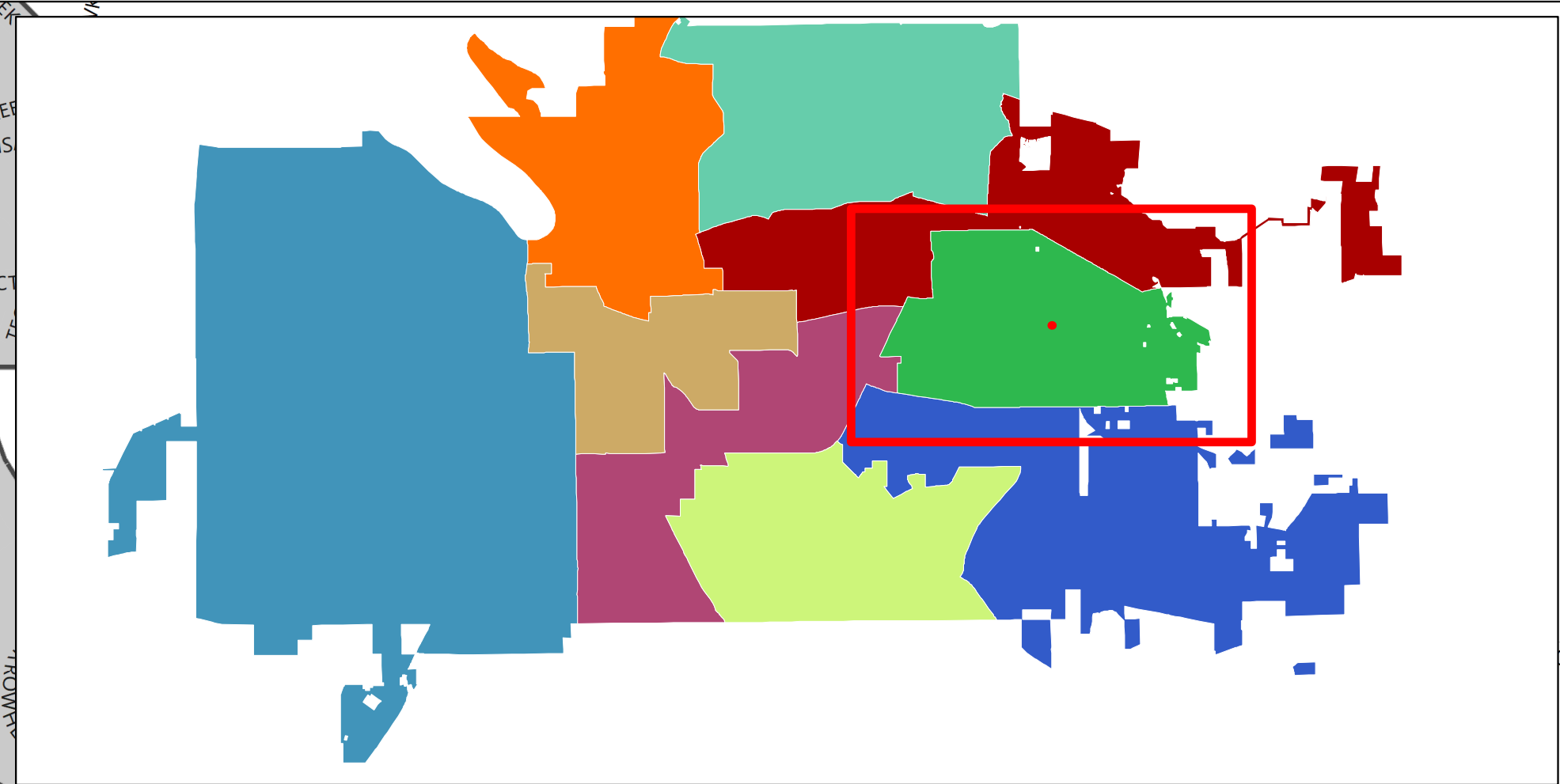
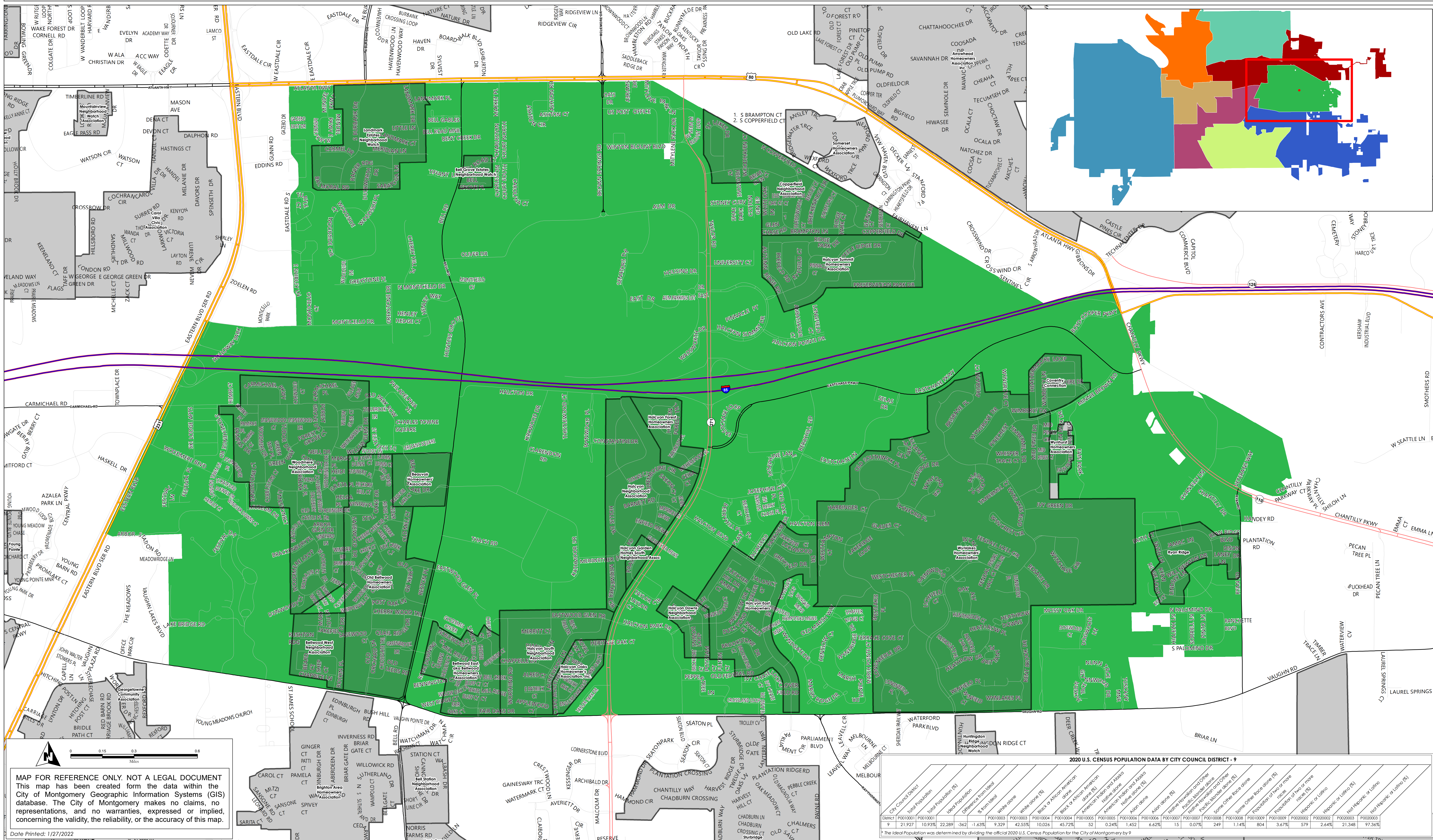
CITY OF MONTGOMERY, ALABAMA

Source: City of Montgomery & US Census Bureau 2020 Redistricting Data



City Council Districts with 2020 U.S. Census Total Population
ADOPTED: DECEMBER 21, 2021

Population Comparison	1	2	3	4	5	6	7	8	9	TOTAL
2010 US Census Total Population	22,590	23,029	22,985	22,795	22,747	22,885	23,096	22,826	22,811	205,764
2020 US Census Total Population (Before Redistricting)	22,806	23,018	21,633	18,227	22,498	21,808	21,135	26,038	23,440	200,603
2020 US Census Total Population (After Redistricting)	22,109	22,150	22,365	22,829	22,045	22,334	22,456	22,388	21,927	200,603
Ideal Population	22,289	22,289	22,289	22,289	22,289	22,289	22,289	22,289	22,289	



MAP FOR REFERENCE ONLY. NOT A LEGAL DOCUMENT
 This map has been created from the data within the City of Montgomery Geographic Information Systems (GIS) database. The City of Montgomery makes no claims, no representations, and no warranties, expressed or implied, concerning the validity, the reliability, or the accuracy of this map.

District	Total Population	% from Ideal	White alone	Black or African American alone	American Indian and Alaska Native alone	Asian alone	Native Hawaiian and Other Pacific Islander alone	Some Other Race alone	Population of two or more races	Hispanic or Latino	Not Hispanic or Latino								
District 9	21,927	10.93%	22,289	-362	-1.63%	9,329	42.55%	10,026	45.72%	52	0.24%	1,452	6.62%	804	3.67%	579	2.64%	21,348	97.36%