

# 444 S. Goldthwaite Street

Montgomery, AL 36104

## INDEX OF DRAWINGS

SHEET	DRAWING TITLE
A1.0	TITLE PAGE / SITE PLAN
A1.1	FLOOR PLANS
A1.2	ROOF AND FOUNDATION PLANS
A1.3	LIGHTING PLAN
A2.1	ELEVATIONS
A2.2	ELEVATIONS

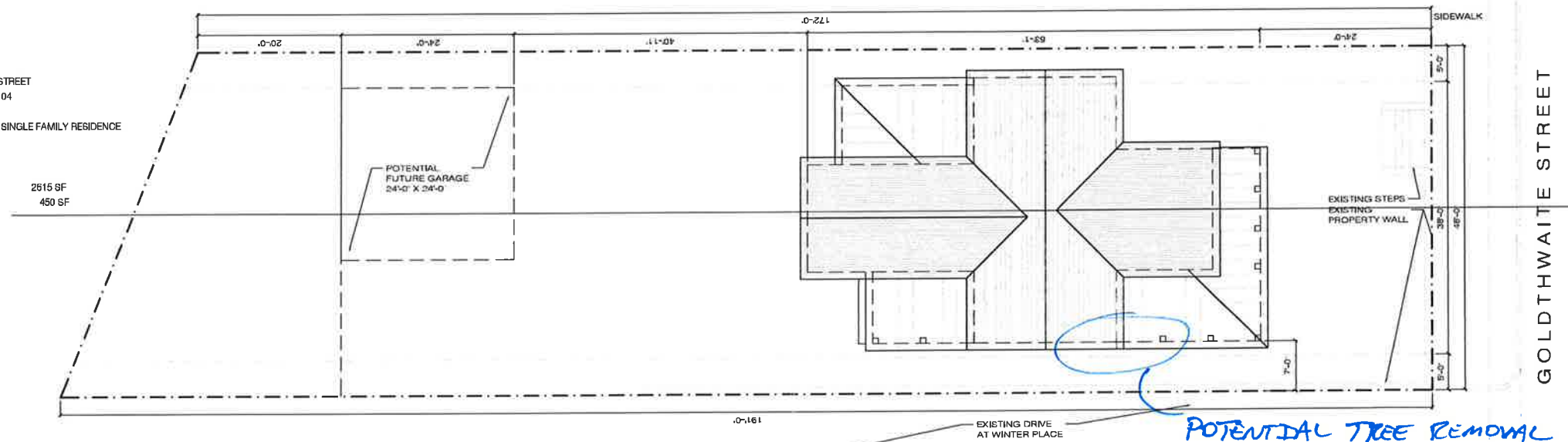
## PROJECT TEAM

### BUILDER

ARCHITECT  
 PFEFFER TORODE ARCHITECTURE  
 12 W. JEFFERSON STREET  
 MONTGOMERY, AL 36104  
 334-513-1976

## BUILDING DATA

ADDRESS: 444 S. GOLDTHWAITE STREET  
 MONTGOMERY, AL 36104  
 PARCEL ID: 11 06 13 1 014 025.000  
 DESCRIPTION: NEW CONSTRUCTION / SINGLE FAMILY RESIDENCE  
 LOT AREA: .20 ACRES  
 DIMENSIONS: 48' x 172'  
 PROPOSED BUILDING AREAS:  
 TOTAL CONDITIONED AREA: 2615 SF  
 TOTAL UNCONDITIONED AREA: 450 SF



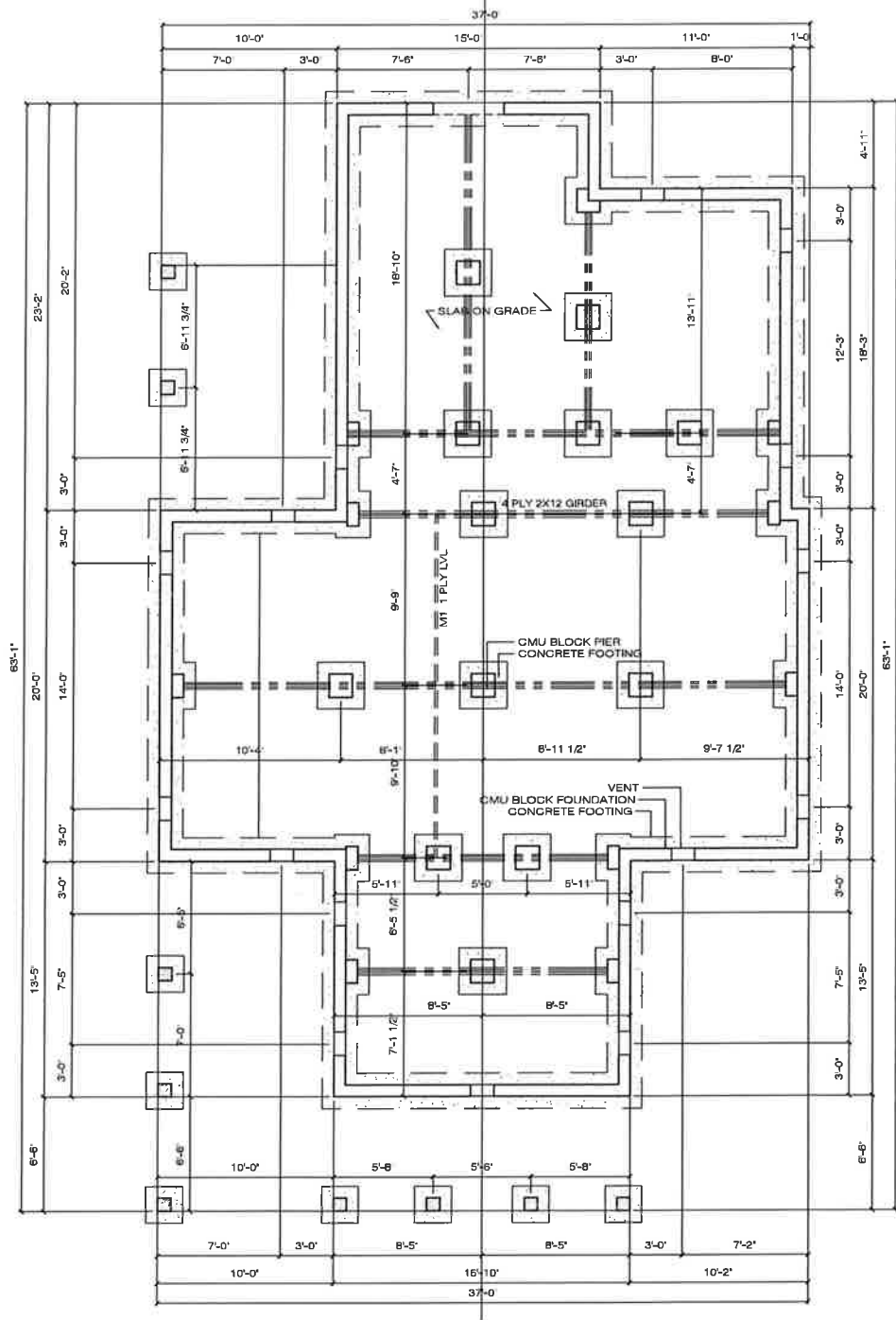
1 SITE PLAN  
 SCALE 1/8" = 1'-0"

ARCHITECT:  
 Pfeiffer Torode Architecture  
 921 E. Woodland Street, Nashville, Tennessee 37206  
 12 W. Jefferson Street, Montgomery, Alabama 36104  
 www.pfeiffertorode.com

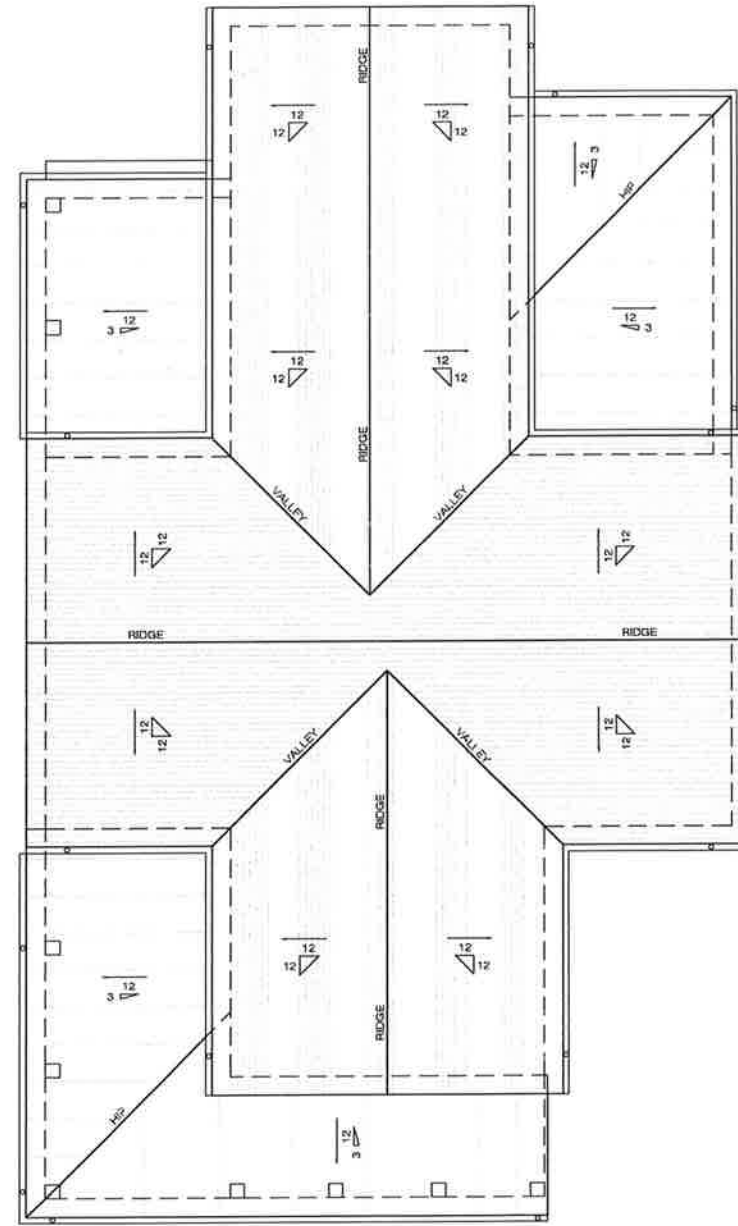
PROJECT:  
 444 S. GOLDTHWAITE STREET  
 MONTGOMERY, AL 36104

AUGUST 2018

A1.0



1 FOUNDATION PLAN  
SCALE 1/4" = 1'-0"



2 ROOF PLAN  
SCALE 1/4" = 1'-0"

AUGUST 2018

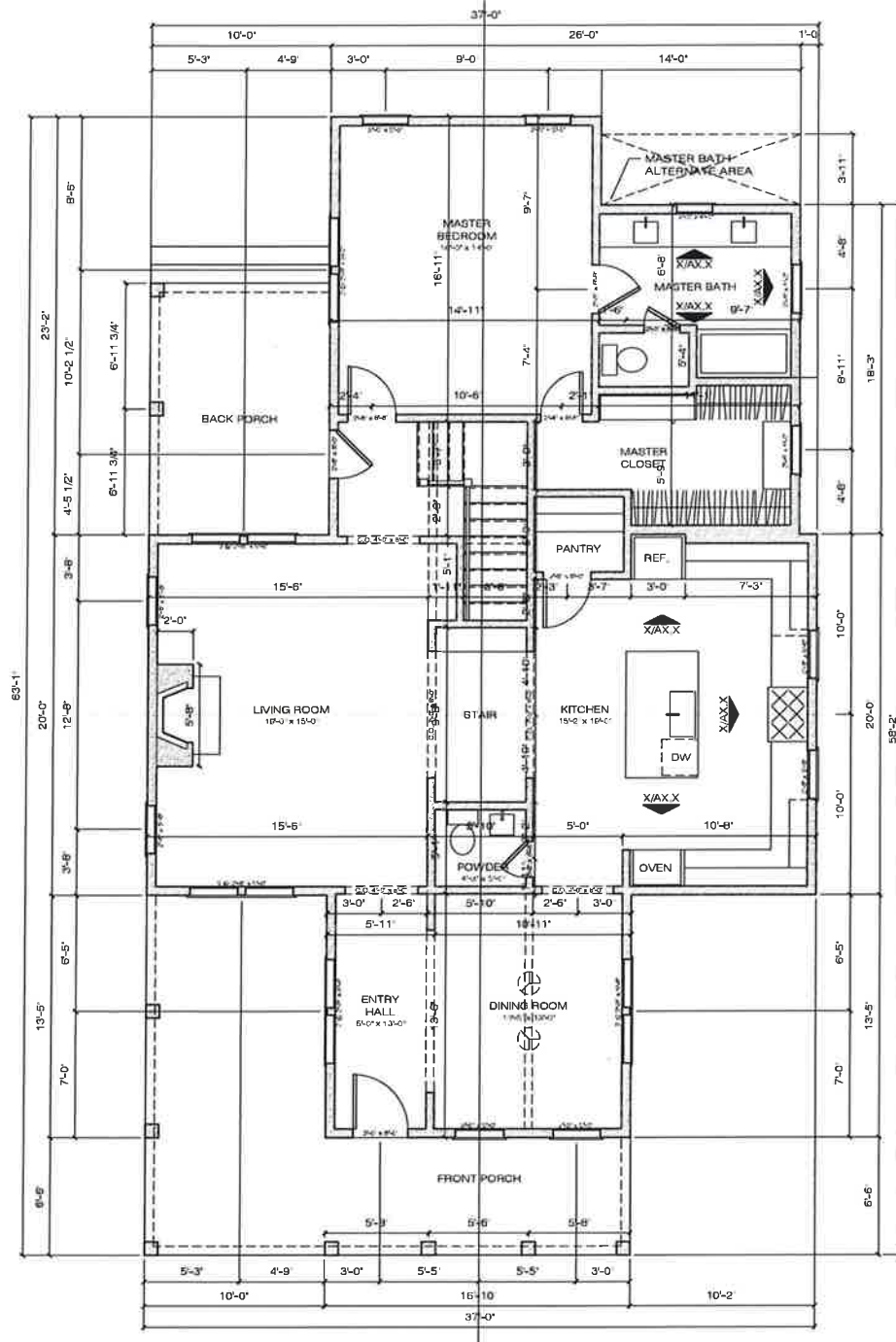
A1.1

PROJECT:  
444 S. GOLDTHWAITE STREET  
MONTGOMERY, AL 36104

ARCHITECT:



Pfeiffer Tonode Architecture  
921 B Woodland Street, Nashville, Tennessee 37206  
12 W Jefferson Street, Montgomery, Alabama 36104  
www.pfeiffertonode.com 314.312.1978

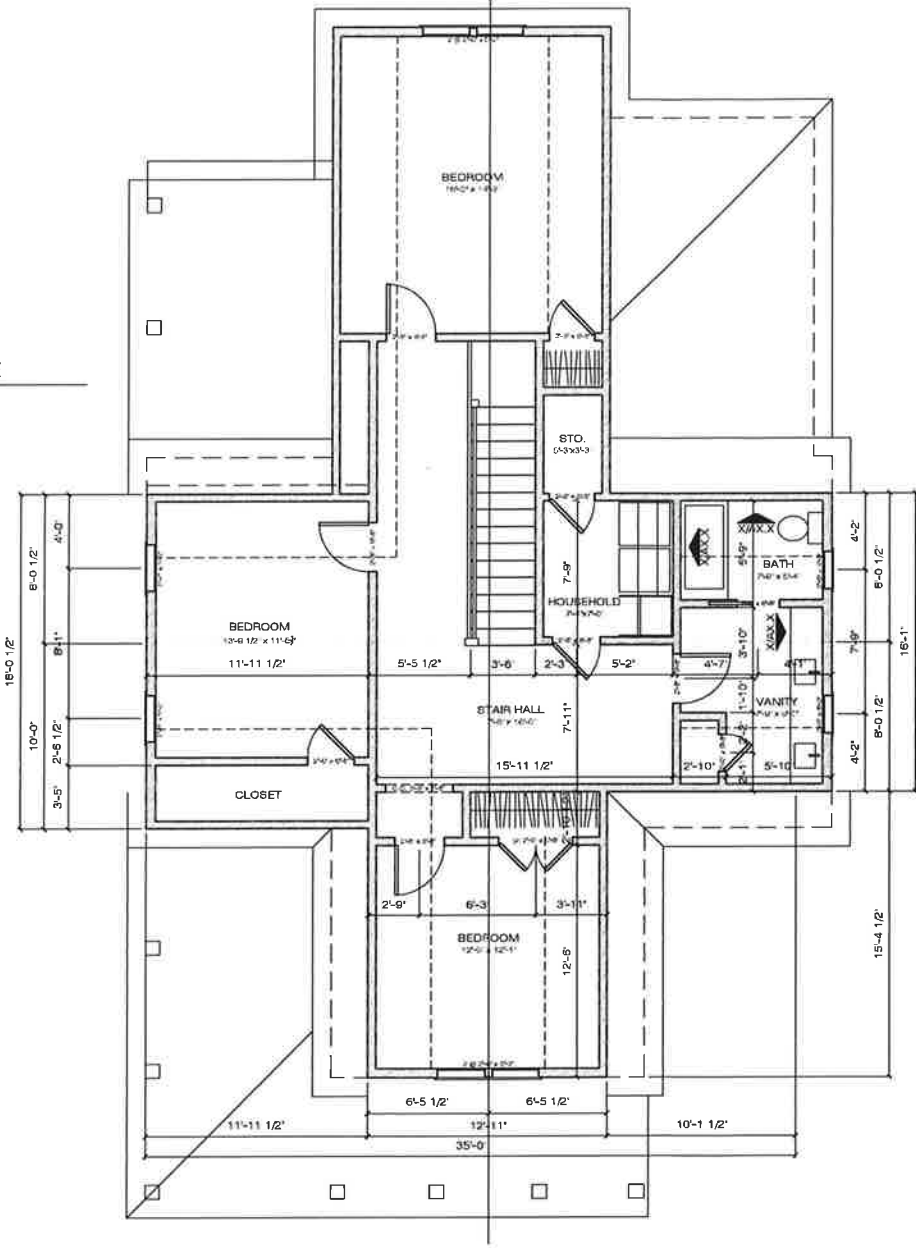


1 FIRST FLOOR PLAN  
SCALE 1/4" = 1'-0"



A MASTER BATH ALTERNATE  
SCALE 1/4" = 1'-0"

FLOOR AREAS  
First Floor 1515 SF  
Second Floor 1100 SF  
Total Conditions 2615 SF  
Unconditional 450 SF



2 SECOND FLOOR PLAN  
SCALE 1/4" = 1'-0"

ARCHITECT:  
Pfeifer Torode Architecture  
921 E. Woodland Street, Nashville, Tennessee 37206  
12 W. Jefferson Street, Montgomery, Alabama 36104  
www.pfeifertorode.com 256.511.1976

PROJECT:  
444 S. GOLDTHWAITE STREET  
MONTGOMERY, AL 36104

AUGUST 2018

A1.1



1 REAR (WEST) ELEVATION  
SCALE 1/4" = 1'-0"



2 NORTH ELEVATION  
SCALE 1/4" = 1'-0"

ARCHITECT:  
Pfeiffer Torode Architecture  
921 S. Woodland Street, Nashville, Tennessee 37206  
12 W. Jefferson Street, Montgomery, Alabama 36104  
www.pfeiffertorode.com  
256.513.1976



PROJECT:  
444 S. GOLDTHWAITE STREET  
MONTGOMERY, AL 36104

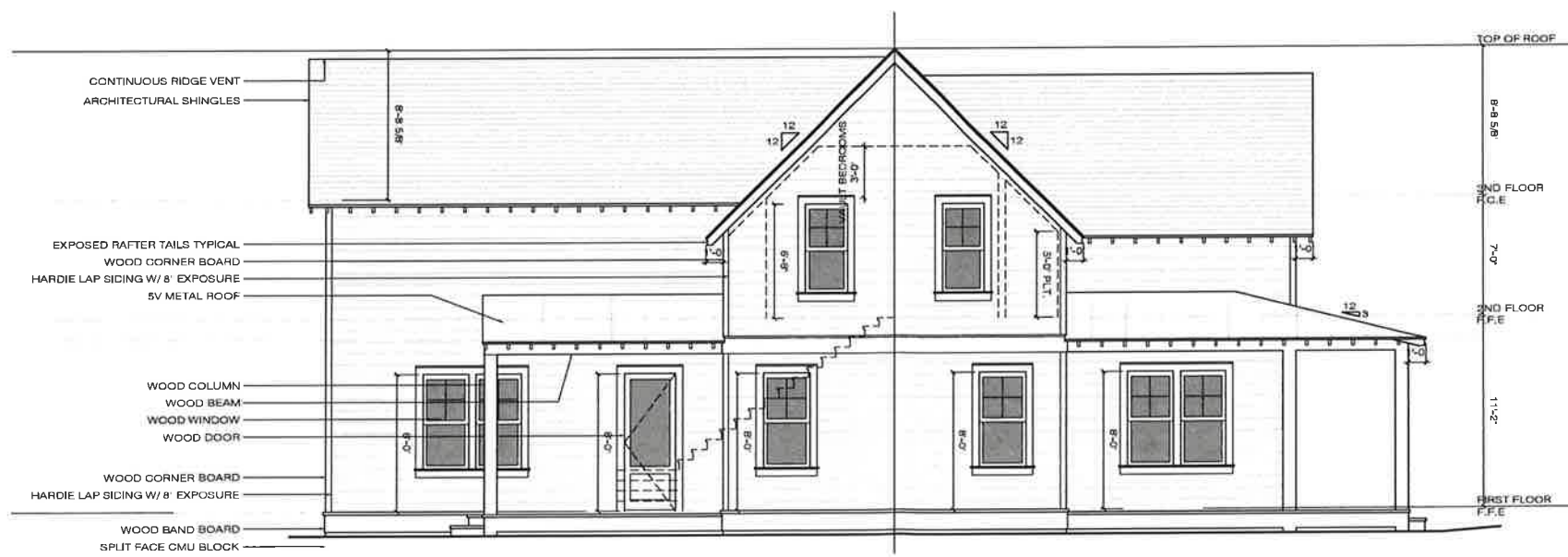
AUGUST 2018

A2.2





1 FRONT (EAST) ELEVATION  
SCALE 1/4" = 1'-0"



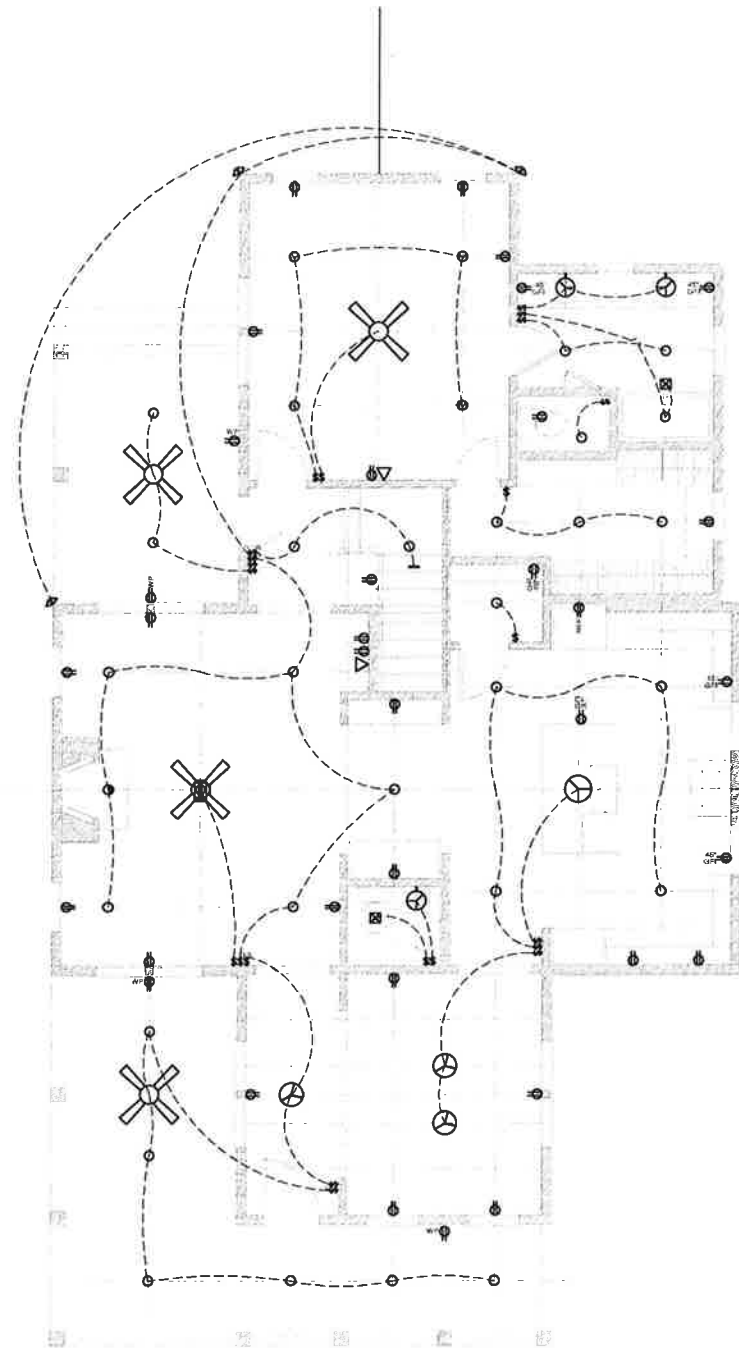
2 SOUTH ELEVATION  
SCALE 1/4" = 1'-0"

ARCHITECT:  
  
 Pfeiffer Torode Architecture  
 921 E. Woodland Street, Nashville, Tennessee 37206  
 12 W. Jefferson Street, Montgomery, Alabama 36104  
 www.piaarch.com 314.513.1976








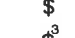


PROJECT:  
 444 S. GOLDTHWAITE STREET  
 MONTGOMERY, AL 36104

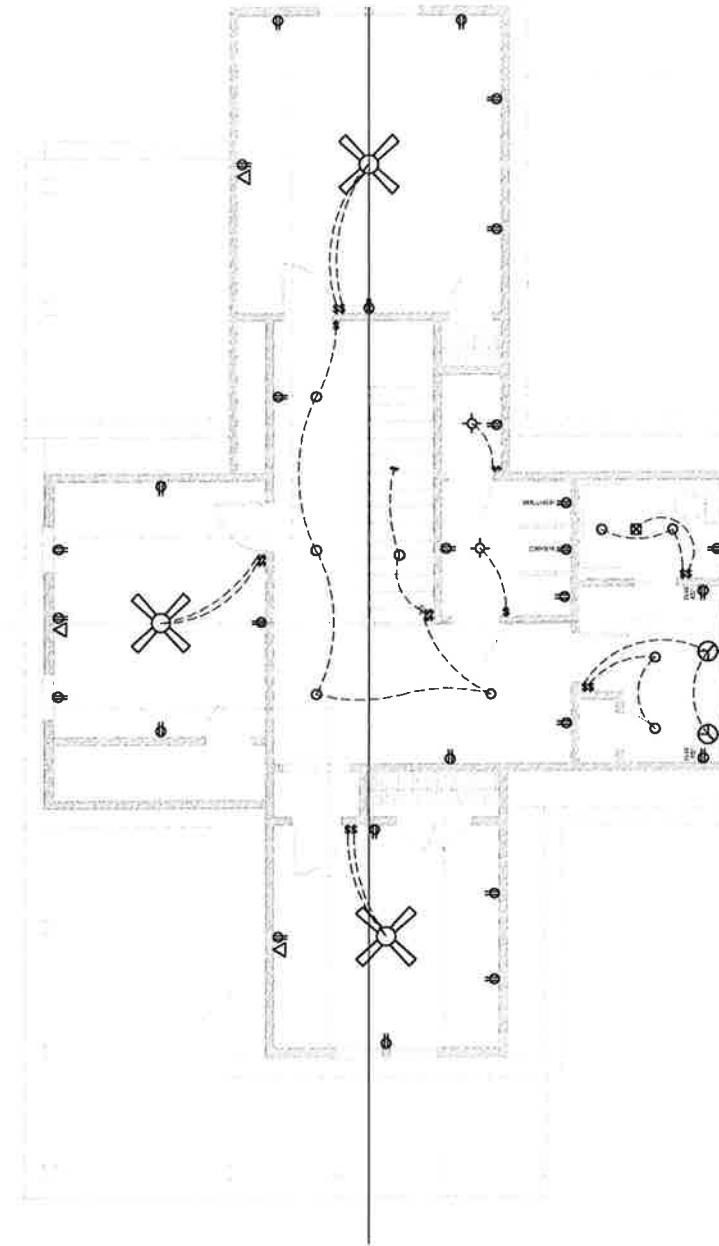
AUGUST 2018

A2.1



1 ARCHITECTURAL LIGHTING PLAN (FIRST FLOOR)  
SCALE 1/4" = 1'-0"

-  FAN / LIGHT COMBINATION
-  PENDANT LIGHT FIXTURE
-  WALL MOUNT LIGHT FIXTURE
-  SURFACE MOUNTED LIGHT FIXTURE
-  RECESSED EYEBALL LIGHT FIXTURE
-  MINI RECESSED LIGHT FIXTURE
-  RECESSED LIGHT FIXTURE
-  LIGHT / EXHAUST FAN COMBINATION
-  EXHAUST FAN
-  TELEVISION / DATA OUTLET
-  POWER OUTLET
-  FLOOR POWER OUTLET
-  LIGHT SWITCH
-  3 WAY LIGHT SWITCH



2 ARCHITECTURAL LIGHTING PLAN (SECOND FLOOR)  
SCALE 1/4" = 1'-0"

AUGUST 2018

A1.3

PROJECT:  
444 S. GOLDTHWAITE STREET  
MONTGOMERY, AL 36104

ARCHITECT:  

**Pfleifer Torode Architecture**  
 921 B Woodland Street, Nashville, Tennessee 37208  
 12 W Jefferson Street, Montgomery, Alabama 36104  
 www.ptaarch.com 334.513.1976